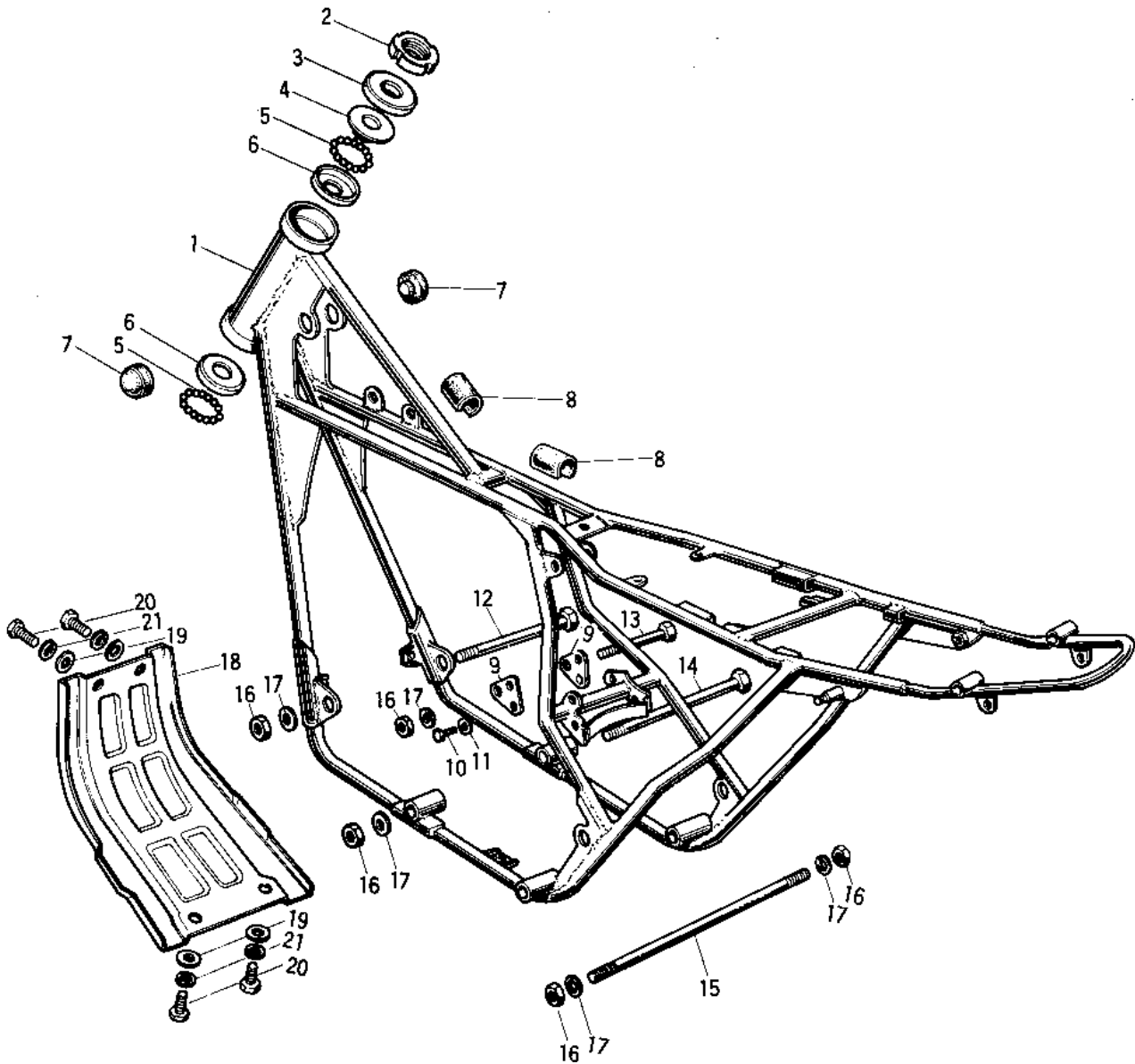


1972 F8-A PARTS DIAGRAM

FRAME/FRAME FITTINGS (71 F81M)



1972 F8-A PARTS LIST

FRAME/FRAME FITTINGS (71 F81M)

ITEM NAME	PART NUMBER	QUANTITY
FRAME (Ref # 1)	32002-040	1
NUT STEERING STEM LCK (Ref # 2)	92090-006	1
CAP STEERING STEM (Ref # 3)	46098-005	1
CONE STERNG BERG UPP (Ref # 4)	92047-003	1
BALL STEEL 1/4' (Ref # 5)	600A0800	38
RACE STEERING BEARING (Ref # 6)	92048-005	2
DAMPER RUBB FUEL TANK (Ref # 7)	92075-050	2
MAT FUEL TANK (Ref # 8)	51067-002	3
PLATE-ENGINE MOUNT (Ref # 9)	32030-020	2
BOLT,8X20 (Ref # 10)	115G0820	4
WASHER SPRING 8MM (Ref # 11)	461F0800	4
BOLT-HEX HEAD,12X163 (Ref # 12)	113B12163A	1
BOLT-HEX HEAD,12X151 (Ref # 13)	113B12151A	1
BOLT HEX HEAD 12X254 (Ref # 14)	113B12254A	1
STUD (Ref # 15)	92006-002	1
NUT-HEX-FINE (Ref # 16)	314B1200	5
WASHER SPRING 12MM (Ref # 17)	461F1200	5
GUARD-ENGINE (Ref # 18)	55011-013	1
WASHER 6.5X20X1.6T (Ref # 19)	92022-125	4
BOLT-UPSET,6X12 (Ref # 20)	112G0612	4
WASHER SPRING 6MM (Ref # 21)	461F0600	4