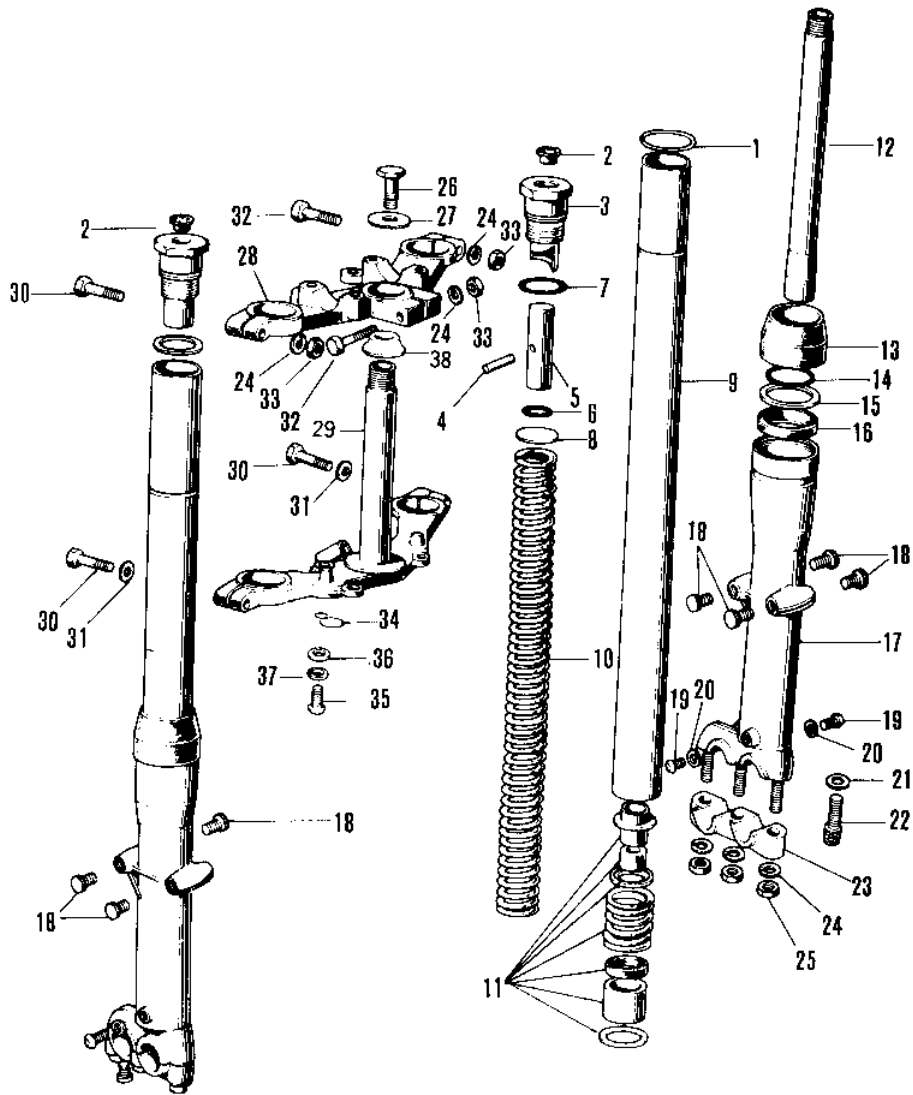


1972 F8-A PARTS DIAGRAM

FRONT FORK ('71 F81M)



1972 F8-A PARTS LIST

FRONT FORK ('71 F81M)

ITEM NAME	PART NUMBER	QUANTITY
FRONT FORK ASSY (Ref # 1~33)	44001-065	1
CIRCLIP (Ref # 1)	44044-009	2
BOLT-FORK TOP (Ref # 2~6)	44041-030	2
CAP CARB MOUNT HOLE (Ref # 2)	14039-001	2
'O' RING FORK TOP (Ref # 7)	44046-015	2
WASHER-FORK SPRG SEAT (Ref # 8)	44029-015	2
TUBE-FORK INNER (Ref # 9)	44013-022	2
SPRING-FORK (Ref # 10)	44026-028	2
CYLINDER-FORK (Ref # 11,12)	44022-003	2
DUST SHIELD (Ref # 13)	44010-014	2
CIRCLIP OIL SEAL FIT (Ref # 14)	44044-005	2
WASHER OIL SEAL FIT (Ref # 15)	44043-023	2
OIL SEAL,FORK (Ref # 16)	44009-020	2
TUBE OUTER (Ref # 17)	44005-030	2
CAP (Ref # 18)	44062-002	7
SCREW PAN HEAD 4X8 (Ref # 19)	220B0408	4
GASKET FORK DRAIN PLG (Ref # 20)	44045-002	4
GASKET FORK CYL BOLT (Ref # 21)	44045-030	2
BOLT FORK CYLINDER (Ref # 22)	44041-027	2
HOLDER-FRONT AXLE (Ref # 23)	44063-001	2
WASHER SPRING 8MM (Ref # 24)	461F0800	9
NUT,8MM (Ref # 25)	311B0800	6
BOLT STRNG STEM HEAD (Ref # 26)	44041-007	1
WASHER STRNG STEM HD (Ref # 27)	44043-016	1
HEAD-STEERING STEM (Ref # 28)	44039-032	1
STEM-STEERING (Ref # 29)	44037-032	1
BOLT HEX HEAD 12X40 (Ref # 30)	113B1240	2
WASHER SPRING 12MM (Ref # 31)	461F1200	2
BOLT (Ref # 32)	92001-1578	3

1972 F8-A PARTS LIST

FRONT FORK ('71 F81M)

ITEM NAME	PART NUMBER	QUANTITY
NUT,8MM (Ref # 33)	311B0800	3
CLAMP-CABLE (Ref # 34)	92037-046	1
SCREW PAN HEAD 6X14 (Ref # 35)	220B0614	1
WASHER PLAIN 6MM (Ref # 36)	410B0600	1
WASHER SPRING 6MM (Ref # 37)	461F0600	1
CONE STERNG BERG LOW (Ref # 38)	92047-010	1