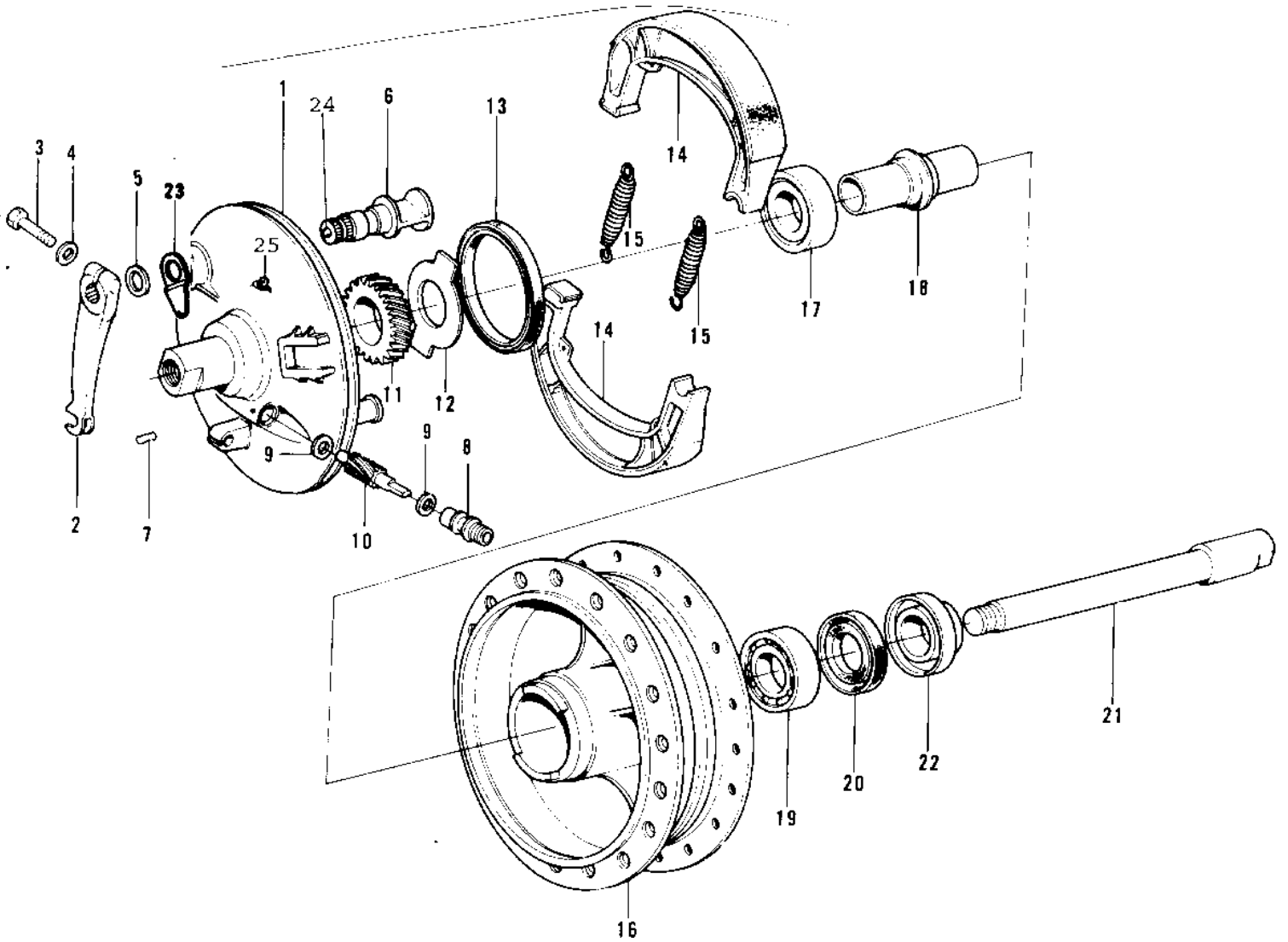


1973 F11M PARTS DIAGRAM

FRONT HUB/BRAKE ('73-'75 F11/F11-A/F11-B)



1973 F11M PARTS LIST

FRONT HUB/BRAKE ('73-'75 F11/F11-A/F11-B)

| ITEM NAME | PART NUMBER | QUANTITY |
|------------------------------------|--------------|----------|
| PANEL-ASY,FR BRK BLK (Ref # 1~15) | 41035-038-21 | |
| PANEL-ASY,FR BRK BUF (Ref # 1~15) | 41035-045-80 | |
| LEVER-BRAKE CAM (Ref # 2) | 41053-017 | |
| BOLT-UPSET (Ref # 3) | 112G0625 | |
| BOLT-UPSET (Ref # 3) | 112G0625 | |
| WASHER PLAIN 6MM (Ref # 4) | 410B0600 | |
| DUST SHIELD BRAKE CA (Ref # 5) | 41051-001 | |
| CAMSHAFT,REAR BRAKE (Ref # 6) | 42026-022 | |
| CAM SHAFT,FRONT BRAK (Ref # 6) | 41050-015 | |
| SCREW-BUSHING NET (Ref # 7) | 41070-004 | |
| PIN,SPRING (Ref # 7) | 41082-001 | |
| BUSH SPEEDMETER CABL (Ref # 8) | 41062-001 | |
| BUSH,SPEEDMETER CABL (Ref # 8) | 41062-005 | |
| WASHER THRST SPD PIN (Ref # 9) | 41063-001 | |
| PINION-SPEEDOMETER (Ref # 10) | 41060-010 | |
| GEAR-SPEEDOMETER (Ref # 11) | 41059-011 | |
| RECIEVER GEAR (Ref # 12) | 41064-003 | |
| OIL SEAL F BRK PANEL (Ref # 13) | 92050-010 | |
| SHOE,BRAKE (Ref # 14) | 42019-011 | |
| SPRING-BRAKE SHOE (Ref # 15) | 42020-004 | |
| DRUM-ASSY,FR BRK,BUF (Ref # 16~20) | 41034-023-80 | |
| BEARING BALL #6202Z (Ref # 17) | 601B6202Z | |
| SPACER-FRONT HUB BER (Ref # 18) | 41039-020 | |
| BEARING BALL #6202 (Ref # 19) | 601B6202 | |
| OIL SEAL RR BRK DRUM (Ref # 20) | 92050-008 | |
| AXLE-FRONT (Ref # 21) | 41068-037 | |
| COLLAR-FRONT AXLE (Ref # 22) | 41069-019 | |
| INDICATOR,FR BRK PNL (Ref # 23) | 41085-005 | |
| GREASE NIPPLE (Ref # 24) | 92080-002 | |