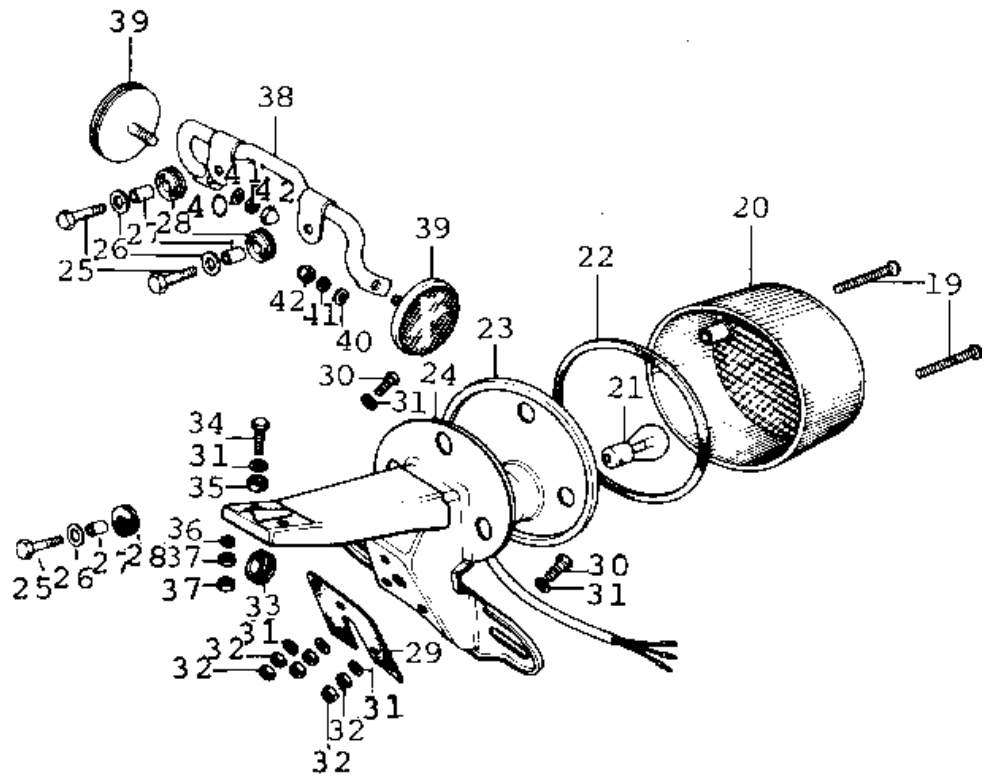
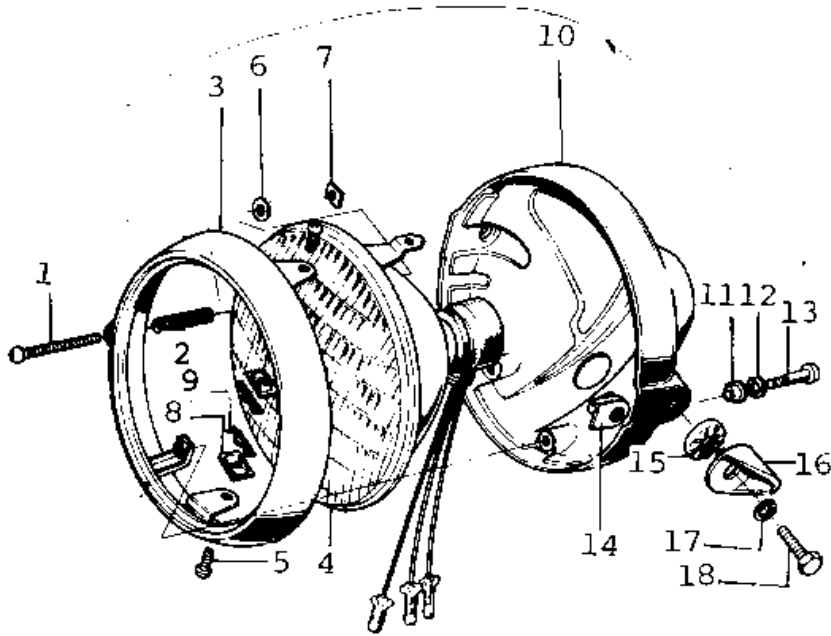


# 1975 F11-B PARTS DIAGRAM

HEADLIGHT/TAILLIGHT



# 1975 F11-B PARTS LIST

## HEADLIGHT/TAILLIGHT

ITEM NAME	PART NUMBER	QUANTITY
LAMP UNIT-HEAD (Ref # 1~9)	23003-015	
SCREW FORCUS ADJUST (Ref # 1)	23019-021	
SPRING FOCUS ADJUST (Ref # 2)	23014-005	
RIM-HEAD LAMP (Ref # 3)	23006-028	
LENS UNIT-HEAD LAMP (Ref # 4)	23007-032	
SCREW LENS UNIT FITT (Ref # 5)	23019-018	
WASHER (Ref # 6)	23021-004	
NUT (Ref # 7)	23020-016	
NUT LENS UNIT FITTIN (Ref # 8)	23020-009	
PIN LENS UNIT FITTIN (Ref # 9)	23022-001	
BODY-HEAD LAMP,BLACK (Ref # 10)	23005-034-10	
WASHER (Ref # 11)	23021-010	
WASHER SPRING 5MM (Ref # 12)	461F0500	
SCREW-PAN HEAD,5MM (Ref # 13)	92011-024	
NUT (Ref # 14)	23020-017	
WASHER-LOCK (Ref # 15)	23021-011	
DAMPER RUBBER (Ref # 16)	92075-134	
WASHER SPRING 10MM (Ref # 17)	461F1000	
BOLT,10MM (Ref # 18)	92007-024	
LAMP ASSY-TAIL BLACK (Ref # 19~28)	23024-021-21	
SCREW-PAN HEAD,4X35 (Ref # 19)	220E0435A	
LENS-TAIL LAMP (Ref # 20)	23026-023	
BULB,6V 17/5.3W (Ref # 21)	92069-028	
GASKET-TAIL LAMP LEN (Ref # 22)	23028-018	
CASE,TAIL LAMP (Ref # 23)	23027-030	
BKT-LICENSE PLT,BLAC (Ref # 24)	23036-018-21	
BOLT-UPSET,6X20 (Ref # 25)	112G0620	
WASHER 6.5X20X1.6T (Ref # 26)	92022-125	
COLLAR,6.8X10X8.5 (Ref # 27)	92027-129	

## 1975 F11-B PARTS LIST

### HEADLIGHT/TAILLIGHT

ITEM NAME	PART NUMBER	QUANTITY
DAMPER RUBBER (Ref # 28)	92075-076	
DAMPER-TAIL LAMP SHC (Ref # 29)	35039-005	
BOLT-UPSET (Ref # 30)	112G0630	
WASHER 6.5X20X1.6T (Ref # 31)	92022-125	
NUT 6MM (Ref # 32)	312B0600	
GROMMET HARNESS 10MM (Ref # 33)	92071-019	
BOLT 6X22 (Ref # 34)	112B0622	
DAMPER RUBBER-TAIL L (Ref # 35)	92075-151	
WASHER PLAIN 6MM (Ref # 36)	411B0600	
NUT 6MM (Ref # 37)	311B0600	
BRACKET-REFLECTOR (Ref # 38)	28013-005	
REFLECTOR-REFLEX,REA (Ref # 39)	28012-008	
WASHER PLAIN 5MM (Ref # 40)	411B0500	
WASHER SPRING 5MM (Ref # 41)	461F0500	
NUT-CAP,5MM (Ref # 42)	322N0500	