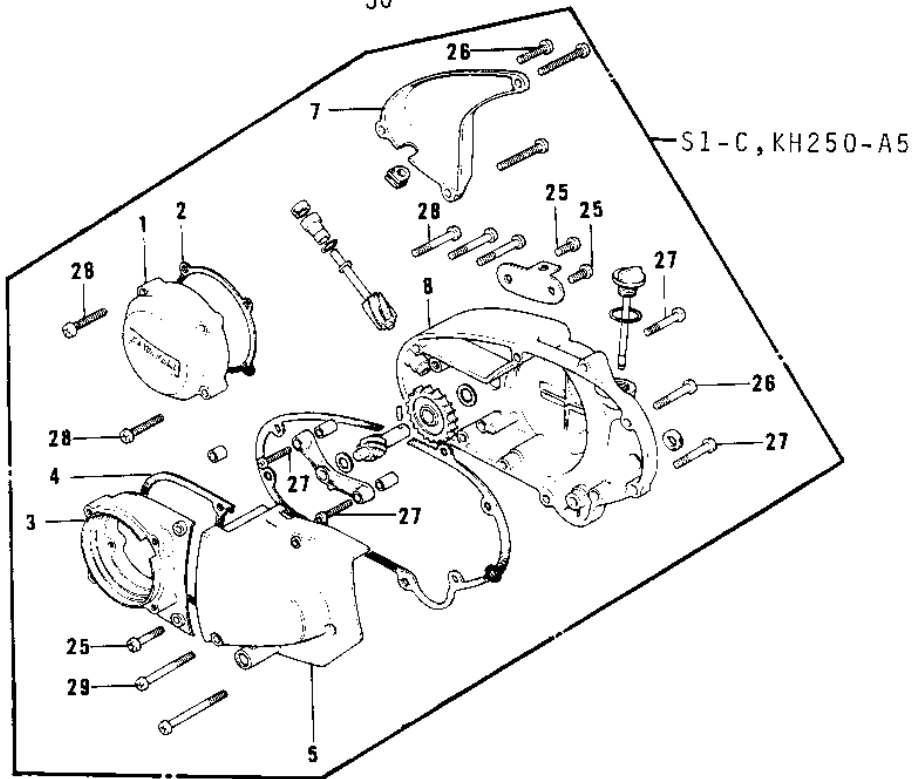
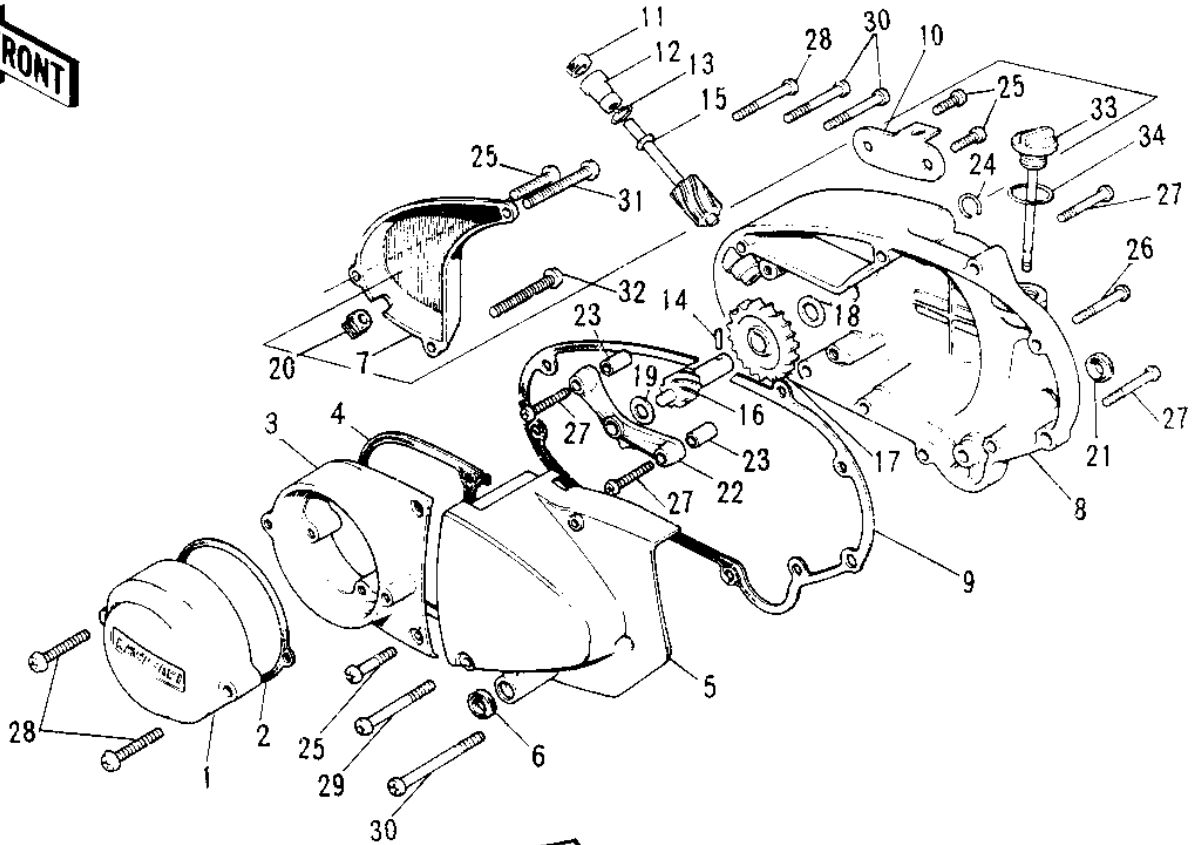


# 1976 KH250-A5 PARTS DIAGRAM

## ENGINE COVERS



# 1976 KH250-A5 PARTS LIST

## ENGINE COVERS

ITEM NAME	PART NUMBER	QUANTITY
CAP,BREAKER POINT,BUF (Ref # 1)	14027-016-80	
COVER, GENERATOR,BUFF (Ref # 1)	14031-1030	
COVER, GENERATOR,BUFF (Ref # 1)	14031-1030	
GASKET-POINT CAP (Ref # 2)	14050-005	
GASKET,POINT CAP (Ref # 2)	14050-009	
COVER,R.H ENGINE,BUFF (Ref # 3)	14031-086-80	
COVER,R.H ENGINE,BUFF (Ref # 3)	14031-086-80	
COVER,L.H ENG,BUFF (Ref # 3)	14031-089-80	
GASKET,L.H ENG COVER (Ref # 4)	14045-022	
COVER,CHAIN CASE,BUFF (Ref # 5)	14026-022-80	
COVER,CHAIN CASE,BUFF (Ref # 5)	14026-022-80	
SEAL-OIL (Ref # 6)	92049-1249	
COVER,OIL PUMP,BUFF (Ref # 7)	14030-030-80	
COVER,R.H,ENG. CLEAR (Ref # 8)	14032-1018	
COVER,R.H,ENG. CLEAR (Ref # 8)	14032-1018	
COVER,R.H,ENG. CLEAR (Ref # 8)	14032-1018	
GASKET-R.H ENGINE COV (Ref # 9)	14046-019	
HOLDER (Ref # 10)	14044-006	
OIL SEAL (Ref # 11)	92054-004	
BUSH (Ref # 12)	92028-075	
"O" RING (Ref # 13)	92055-025	
PIN,DOWEL (Ref # 14)	92042-035	
SHAFT-TACHOMETER GEAR (Ref # 15)	13226-005	
GEAR-TACHOMETER (Ref # 16)	13224-008	
GEAR-OIL PUMP (Ref # 17)	16085-017	
WASHER THRUST (Ref # 18)	92026-025	
WASHER THRUST (Ref # 19)	92026-026	
GROMMET-R.H ENG COVER (Ref # 20)	14038-030	
OIL SEAL SB16244 (Ref # 21)	92049-002	

# 1976 KH250-A5 PARTS LIST

## ENGINE COVERS

ITEM NAME	PART NUMBER	QUANTITY
HOLDER-TACHOMETER GR (Ref # 22)	14018-005	
PIN-DOWEL (Ref # 23)	92042-007	
CIRCLIP (Ref # 24)	92036-017	
SCREW PAN HEAD 6X20 (Ref # 25)	220B0620	
SCREW PAN HEAD 6X20 (Ref # 25)	220B0620	
SCREW PAN HEAD 6X25 (Ref # 26)	220B0625	
SCREW PAN HEAD 6X25 (Ref # 26)	220B0625	
SCREW PAN HEAD 6X30 (Ref # 27)	220B0630	
SCREW PAN HEAD 6X30 (Ref # 27)	220B0630	
SCREW PAN HEAD 6X35 (Ref # 28)	220B0635	
SCREW PAN HEAD 6X35 (Ref # 28)	220B0635	
SCREW PAN HEAD 6X45 (Ref # 29)	220B0645	
SCREW PAN HEAD 6X55 (Ref # 30)	220B0655	
SCREW-PAN HEAD,6X90 (Ref # 31)	220B0690	
SCREW PAN HEAD 6X100 (Ref # 32)	220B06100	
PLUG-OIL FILLER (Ref # 33)	16115-017	
"O" RING,20MM (Ref # 34)	670B2020	