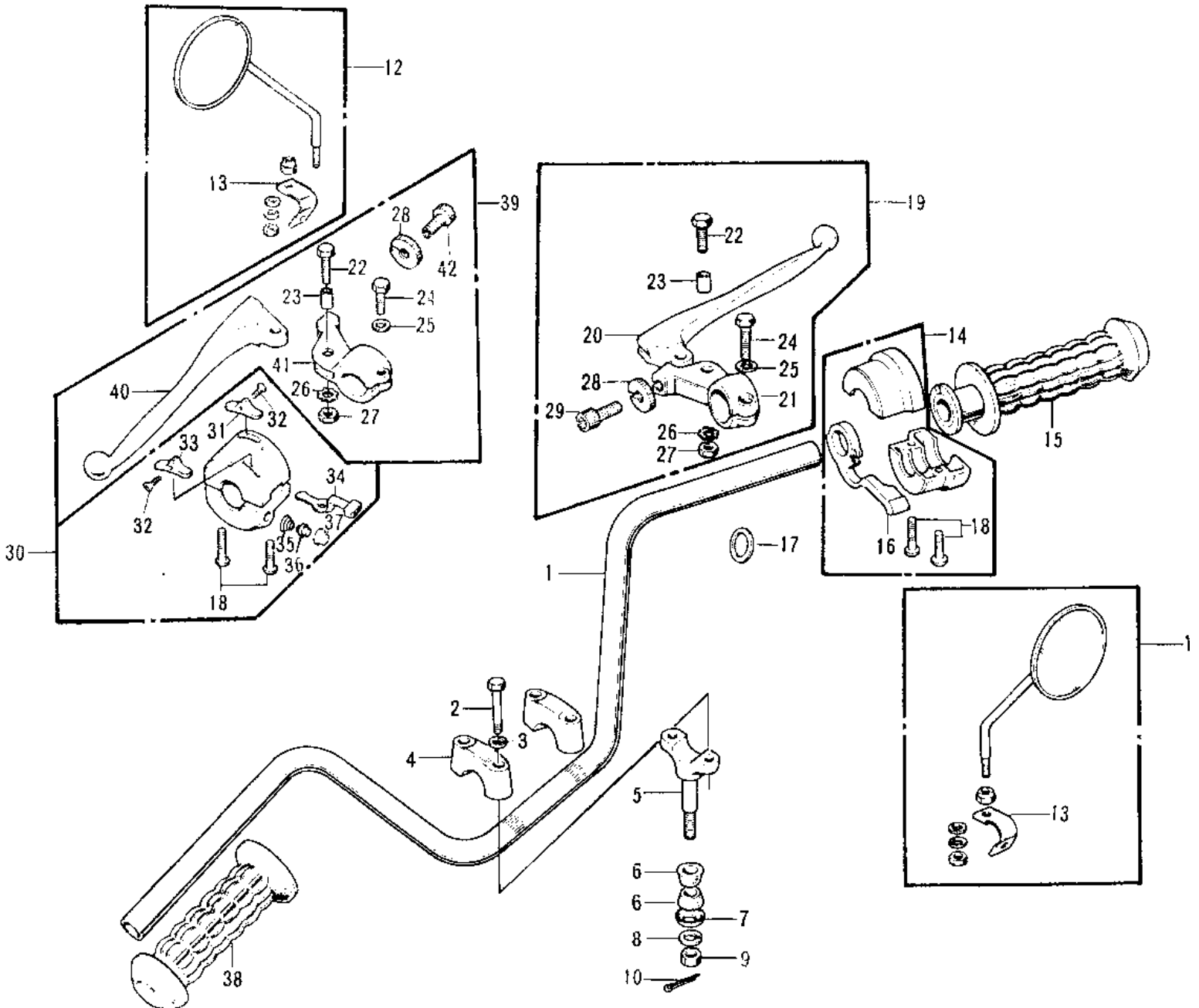


# 1973 Mach I PARTS DIAGRAM

HANDLEBAR (S1-A)



# 1973 Mach I PARTS LIST

## HANDLEBAR (S1-A)

ITEM NAME	PART NUMBER	QUANTITY
HANDLEBAR (Ref # 1)	46003-030	1
BOLT 8X38 (Ref # 2)	92001-1405	4
BOLT 8X38 (Ref # 2)	92001-1405	4
WASHER SPRING 8MM (Ref # 3)	461F0800	4
HOLDER-HANDLEBAR (Ref # 4)	46012-008	2
HOLDER-HANDLEBAR LOW (Ref # 5)	46012-010	2
DAMPER RUBBER HANDLE (Ref # 6)	92075-039	4
CAP HANDLEBAR HOLDER (Ref # 7)	46016-003	2
WASHER SPRING 10MM (Ref # 8)	461F1000	2
NUT,10MM (Ref # 9)	314B1000	2
PIN,SNAP (Ref # 10)	554A0800	2
REAR VIEW MIRROR R.H. (Ref # 11)	56002-024	(1
REAR VIEW MIRROR LH (Ref # 12)	56003-016	1
BRACKET (Ref # 13)	56006-001	AR
CASE ASSY-R.H (Ref # 14)	46018-024	1
GRIP ASSY-THROTTLE (Ref # 15)	46019-023	1
LEVER-STARTER (Ref # 16)	46096-007	1
WASHER,WAVE (Ref # 17)	46114-003	1
SCREW PAN HEAD 5X22 (Ref # 18)	220B0522	4
LEVER ASSY,FRNT BRAKE (Ref # 19)	46021-018	1
LEVER FRONT BRAKE (Ref # 20)	46058-004	1
HOLDER,FR BRAKE LEVER (Ref # 21)	46060-008	1
BOLT HEX HEAD 5X20 (Ref # 22)	92007-020	2
COLLAR LEVER (Ref # 23)	46059-011	2
BOLT HEX HEAD 6X25 (Ref # 24)	110N0625	2
WASHER PLAIN 6MM (Ref # 25)	410B0600	2
WASHER LOCK 5MM (Ref # 26)	464H0500	2
NUT 5MM (Ref # 27)	312B0500	2
NUT-LOCK (Ref # 28)	46056-005	2

# 1973 Mach I PARTS LIST

## HANDLEBAR (S1-A)

ITEM NAME	PART NUMBER	QUANTITY
SCREW CABLE ADJUST (Ref # 29)	46055-003	2
CASE ASSY-L.H (Ref # 30)	46091-005	1
KNOB-L.H SWITCH,B (Ref # 31)	46044-008	1
SCREW CNTSNK HD 3X8 (Ref # 32)	221B0308A	2
KNOB-L.H SWITCH (Ref # 33)	46044-011	1
KNOB-SWITCH (Ref # 34)	46044-007	1
SWITCH ASSY,HORN BUTN (Ref # 35)	27010-1009	1
SWITCH ASSY,HORN BUTN (Ref # 36)	27010-1009	1
SWITCH ASSY,HORN BUTN (Ref # 37)	27010-1009	1
SWITCH ASSY,HORN BUTN (Ref # 37)	27010-1009	1
RUBBER-L.H GRIP (Ref # 38)	46075-017	1
LEVER ASSY-CLUTCH (Ref # 39)	46076-026	1
LEVER-CLUTCH (Ref # 40)	46092-015	1
HOLDER,CLUTCH LEVER (Ref # 41)	46094-010	1
SCREW ADJUST (Ref # 42)	46055-006	1