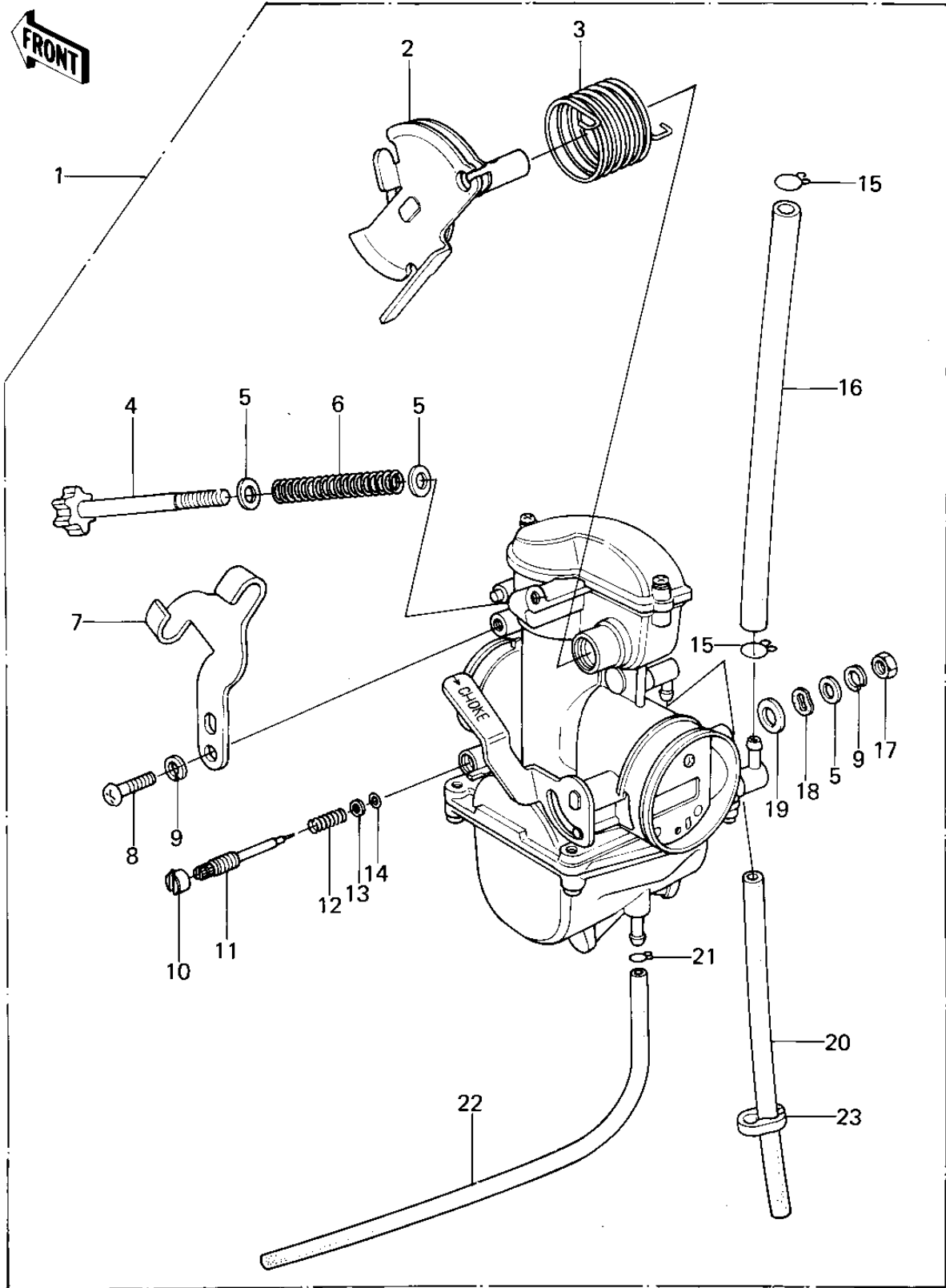


# 1979 KLR250 PARTS DIAGRAM

CARBURETOR ASSY ('78-'79 KL250-A1/A1A/A2)



# 1979 KLR250 PARTS LIST

CARBURETOR ASSY ('78-'79 KL250-A1/A1A/A2)

| ITEM NAME                        | PART NUMBER | QUANTITY |
|----------------------------------|-------------|----------|
| CARBURETOR ASSY (Ref # 1)        | 16001-1148  | 1        |
| CARBURETOR ASSY (Ref # 1)        | 16001-1148  | 1        |
| CARBURETOR,RH,OUTSIDE (Ref # 1)  | 16001-1405  | 1        |
| SHAFT,THROTTLE (Ref # 2)         | 16041-1001  | 1        |
| SHAFT,THROTTLE (Ref # 2)         | 16041-1002  | 1        |
| SPRING (Ref # 3)                 | 92081-1056  | 1        |
| SCREW,THROTTLE STOP (Ref # 4)    | 16021-1001  | 1        |
| WASHER PLAIN 5MM (Ref # 5)       | 410B0500    | 3        |
| SPRING,THR.STOP SCREW (Ref # 6)  | 92081-1005  | 1        |
| PLATE,STAY (Ref # 7)             | 13169-1095  | 1        |
| SCREW-PAN-CROS (Ref # 8)         | 220B0514    | 1        |
| WASHER SPRING 5MM (Ref # 9)      | 461F0500    | 2        |
| CAP,JET NEEDLE (Ref # 10)        | 11012-3727  | 1        |
| SCREW,PILOT ADJUST (Ref # 11)    | 16014-1011  | 1        |
| SPRING,PIROT ADJ SCRW (Ref # 12) | 92081-1002  | 1        |
| WASHER,PLAIN (Ref # 13)          | 92022-1003  | 1        |
| O RING,PILOT ADJ (Ref # 14)      | 92055-1002  | 1        |
| CLAMP,FUEL HOSE (Ref # 15)       | 92037-1040  | 2        |
| HOSE,FUEL INLET (Ref # 16)       | 92059-1001  | 1        |
| NUT,5MM (Ref # 17)               | 311B0500    | 1        |
| WASHER,SPRING (Ref # 18)         | 92022-1055  | 1        |
| WASHER PLAIN 6MM (Ref # 19)      | 410B0600    | 1        |
| HOSE (Ref # 20)                  | 92059-110   | 1        |
| CLAMP,TUBE,OVERFLOW (Ref # 21)   | 92037-1142  | 1        |
| HOSE,FUEL OVERFLOW (Ref # 22)    | 92059-1046  | 1        |
| CLAMP,OVERFLOW (Ref # 23)        | 92037-1067  | 1        |