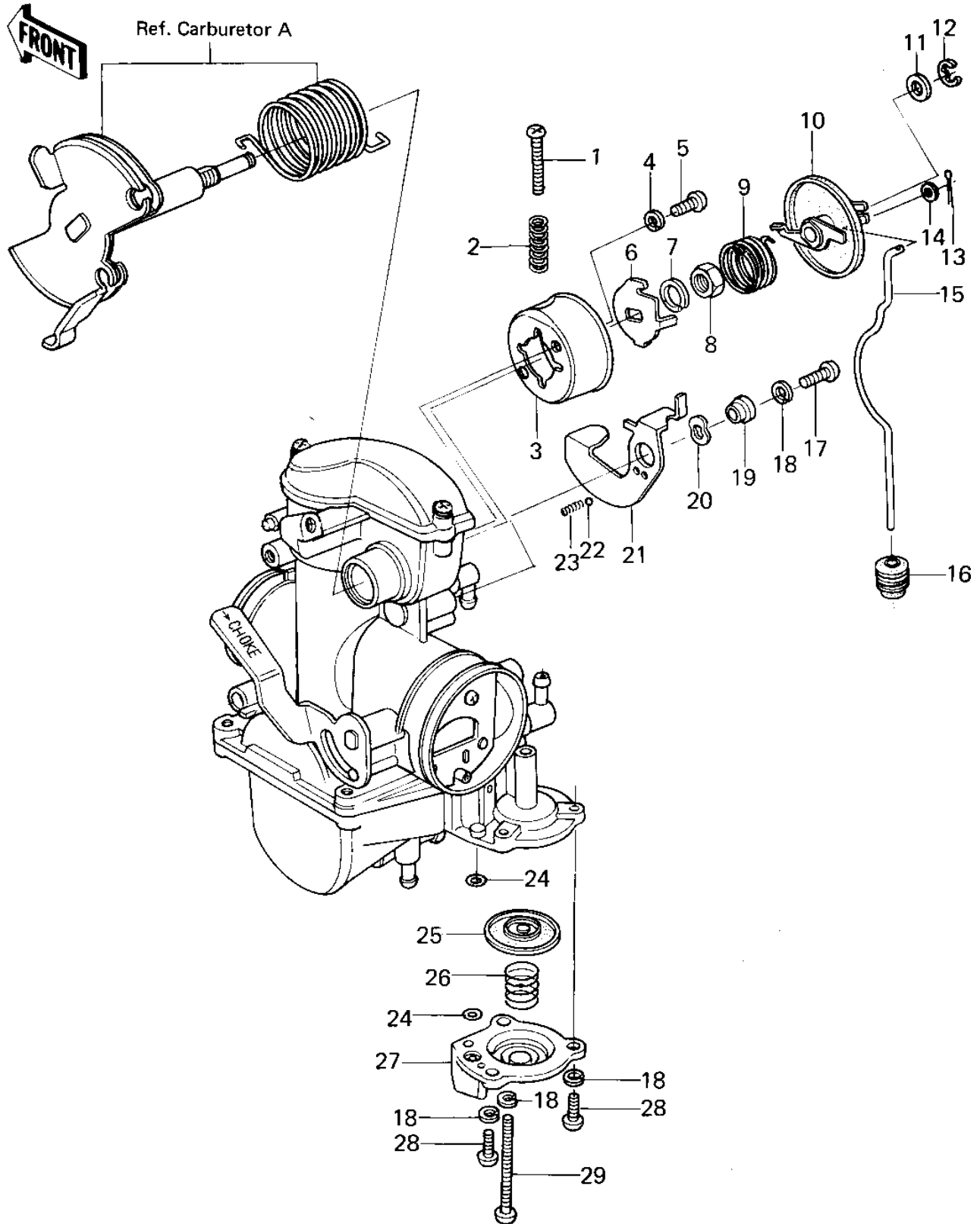


# 1979 KLR250 PARTS DIAGRAM

## ACCELERATOR PUMP



# 1979 KLR250 PARTS LIST

## ACCELERATOR PUMP

ITEM NAME	PART NUMBER	QUANTITY
SCREW,TAPPING,4X16 (Ref # 1)	92009-1044	1
SPRING, (Ref # 2)	92081-1091	1
CAP,ROCKER ARM (Ref # 3)	11012-1055	1
WASHER SPRING 4MM (Ref # 4)	461F0400	2
SCREW PAN HEAD 4X6 (Ref # 5)	220B0406	2
ARM-ROCKER,CARBURETOR (Ref # 6)	39003-1003	1
WASHER,SPRING,7M/M (Ref # 7)	92022-1090	1
NUT,7M/M (Ref # 8)	92015-1048	1
SPRING,ROCKER ARM (Ref # 9)	92081-1090	1
ARM-ROCKER,CARBURETOR (Ref # 10)	39003-1002	1
WASHER PLAIN 5MM (Ref # 11)	410B0500	1
CIRCLIP SELD BEM FIT (Ref # 12)	482K4000	1
PIN COTTER 1.2X10 (Ref # 13)	550D1210	1
WASHER PLAIN 3MM (Ref # 14)	410B0300	1
ROD,DIAPHRAGM (Ref # 15)	46102-1002	1
CAP,RUBBER (Ref # 16)	11012-1056	1
SCREW-PAN-CROS (Ref # 17)	220B0414	1
WASHER SPRING 4MM (Ref # 18)	461F0400	4
COLLAR,LINK LEVER (Ref # 19)	92027-1128	1
WASHER,SPRING (Ref # 20)	92022-1055	1
LEVER,LINK (Ref # 21)	13168-1031	1
BALL,STEEL,1/8" (Ref # 22)	600A0400	1
SPRING (Ref # 23)	92081-1004	1
SEAL-"U"RING (Ref # 24)	92093-1046	2
DIAPHRAGM,CARBURETOR (Ref # 25)	43028-1006	1
SPRING,DIAPHRAGM (Ref # 26)	92081-1092	1
COVER-PUMP (Ref # 27)	14025-1076	1
SCREW PAN HEAD 4X10 (Ref # 28)	220B0410	2
SCREW-PAN-CROS (Ref # 29)	220B0440	1