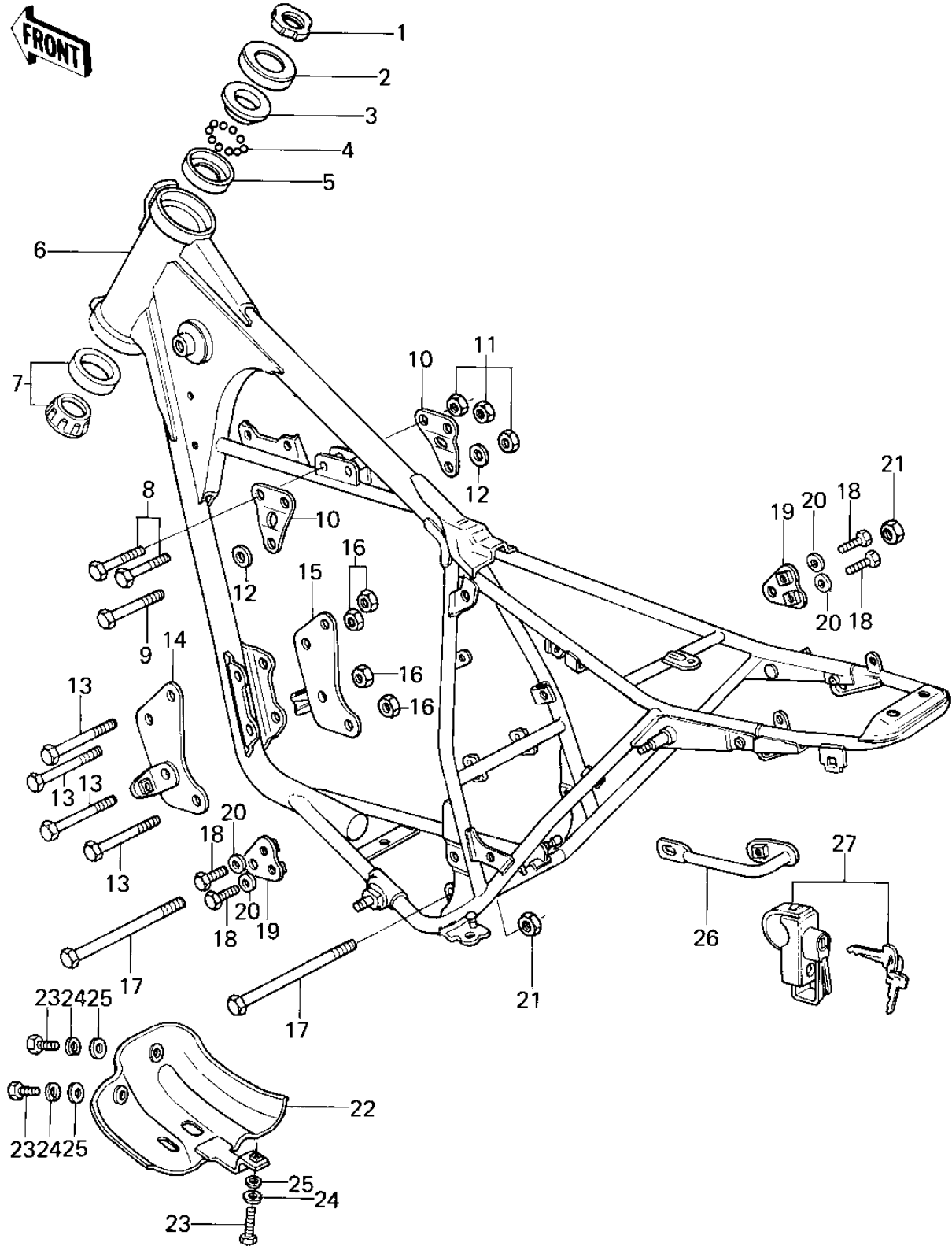


# 1979 KLR250 PARTS DIAGRAM

## FRAME/FRAME FITTINGS



# 1979 KLR250 PARTS LIST

## FRAME/FRAME FITTINGS

ITEM NAME	PART NUMBER	QUANTITY
NUT,STEERING STEM (Ref # 1)	92090-022	1
CAP,STEERING STEM (Ref # 2)	46098-018	1
CONE,STEERING STEM (Ref # 3)	92047-020	1
BALL STEEL 1/4' (Ref # 4)	600A0800	17
RACE,STEERING STEM (Ref # 5)	92048-010	1
FRAME (Ref # 6)	32002-1005	1
BEARING,STEERING STEM (Ref # 7)	92047-017	1
BOLT,HEX HEAD,8X45 (Ref # 8)	92001-1219	2
BOLT,HEX HEAD,8X65 (Ref # 9)	110B0865	1
BRACKET,ENGINE,HEAD (Ref # 10)	32029-1007	2
NUT,LOCK,8MM (Ref # 11)	92017-013	3
WASHER PLAIN 8MM (Ref # 12)	410B0800	2
BOLT FLANGED,8X70 (Ref # 13)	92001-1583	4
BRACKET,ENG,FR,L.H (Ref # 14)	32029-1009	1
BRACKET,ENG.FR.R.H (Ref # 15)	32029-1006	1
NUT,LOCK,8MM (Ref # 16)	92017-013	4
BOLT, FLANGED, 10X110 (Ref # 17)	92001-1602	2
BOLT-SMALL-UPSET,8X18 (Ref # 18)	115G0818	4
BRACKET,ENGINE (Ref # 19)	32029-1008	2
WASHER PLAIN 8MM (Ref # 20)	410B0800	4
NUT,LOCK,10MM (Ref # 21)	92019-021	2
GUARD,ENGINE (Ref # 22)	55020-1004	1
BOLT-UPSET 6X14 (Ref # 23)	112B0614	3
WASHER SPRING 6MM (Ref # 24)	461F0600	3
WASHER 6.5X20X1.6T (Ref # 25)	92022-125	3
GRIP,FRAME,L.H. (Ref # 26)	32109-1001	1
LOCK ASSY,HELMET (Ref # 27)	27016-5022	1