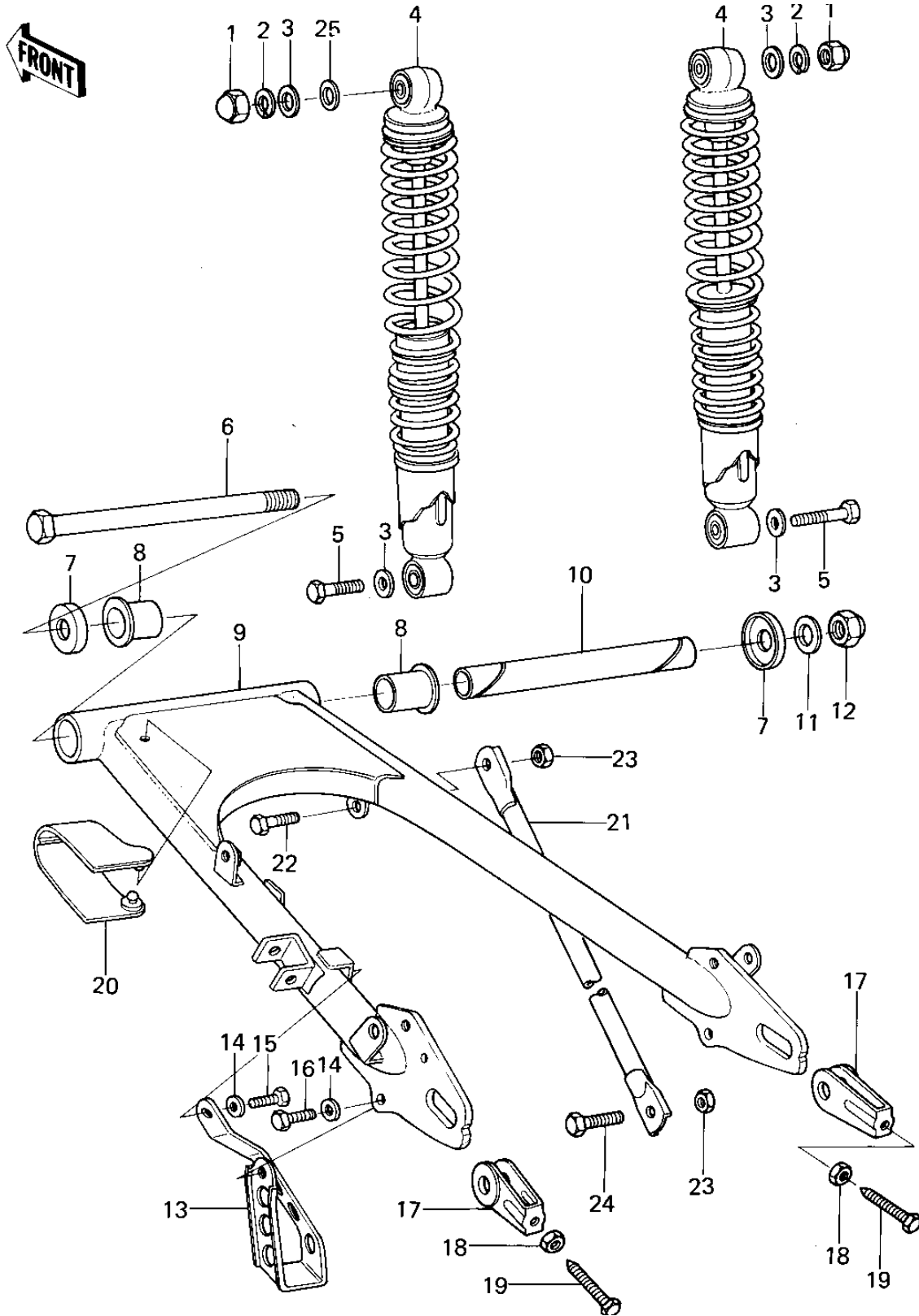


# 1978 KLR250 PARTS DIAGRAM

SWING ARM/SHOCK ABSORBERS ('78-'79 KL250)



# 1978 KLR250 PARTS LIST

## SWING ARM/SHOCK ABSORBERS (78-79 KL250)

| ITEM NAME                        | PART NUMBER | QUANTITY |
|----------------------------------|-------------|----------|
| NUT SHOCK ABSORBER (Ref # 1)     | 92020-003   | 2        |
| WASHER SPRING 10MM (Ref # 2)     | 461F1000    | 2        |
| WASHER (Ref # 3)                 | 411F1000    | 4        |
| SHOCK ABSBR RR (Ref # 4)         | 45014-1005  | 2        |
| BOLT,HEX HEAD,10X32 (Ref # 5)    | 113N1032    | 2        |
| SHAFT,SWING ARM PIVOT (Ref # 6)  | 33032-046   | 1        |
| CAP,SWING ARM (Ref # 7)          | 11012-1019  | 2        |
| BUSHING-SWING ARM (Ref # 8)      | 33033-009   | 2        |
| SWING ARM (Ref # 9)              | 33001-1003  | 1        |
| SLEEVE,SWING ARM (Ref # 10)      | 42036-1006  | 1        |
| WASHER PLAIN 8MM (Ref # 11)      | 411B0800    | 2        |
| NUT-LOCK,14MM (Ref # 12)         | 92019-011   | 1        |
| GUARD,CHAIN (Ref # 13)           | 55020-1001  | 1        |
| WASHER PLAIN 8MM (Ref # 14)      | 411B0800    | 2        |
| BOLT-SMALL-UPSET,8X14 (Ref # 15) | 115B0814    | 1        |
| BOLT,8X20 (Ref # 16)             | 115G0820    | 1        |
| ADJUSTER-CHAIN (Ref # 17)        | 33040-043   | 2        |
| NUT 8MM (Ref # 18)               | 312B0800    | 2        |
| BOLT,8X50 (Ref # 19)             | 92001-1399  | 2        |
| GUARD,CHAIN,FR (Ref # 20)        | 55020-1063  | 1        |
| TORQUE LINK,REAR BRAK (Ref # 21) | 43007-048   | 1        |
| BOLT,HEX HEAD,10X22 (Ref # 22)   | 113G1022    | 1        |
| NUT,10MM (Ref # 23)              | 92019-016   | 2        |
| BOLT,10X28 (Ref # 24)            | 113G1028    | 1        |
| WASHER-PL-10.5X26X2.3 (Ref # 25) | 92022-044   | 1        |