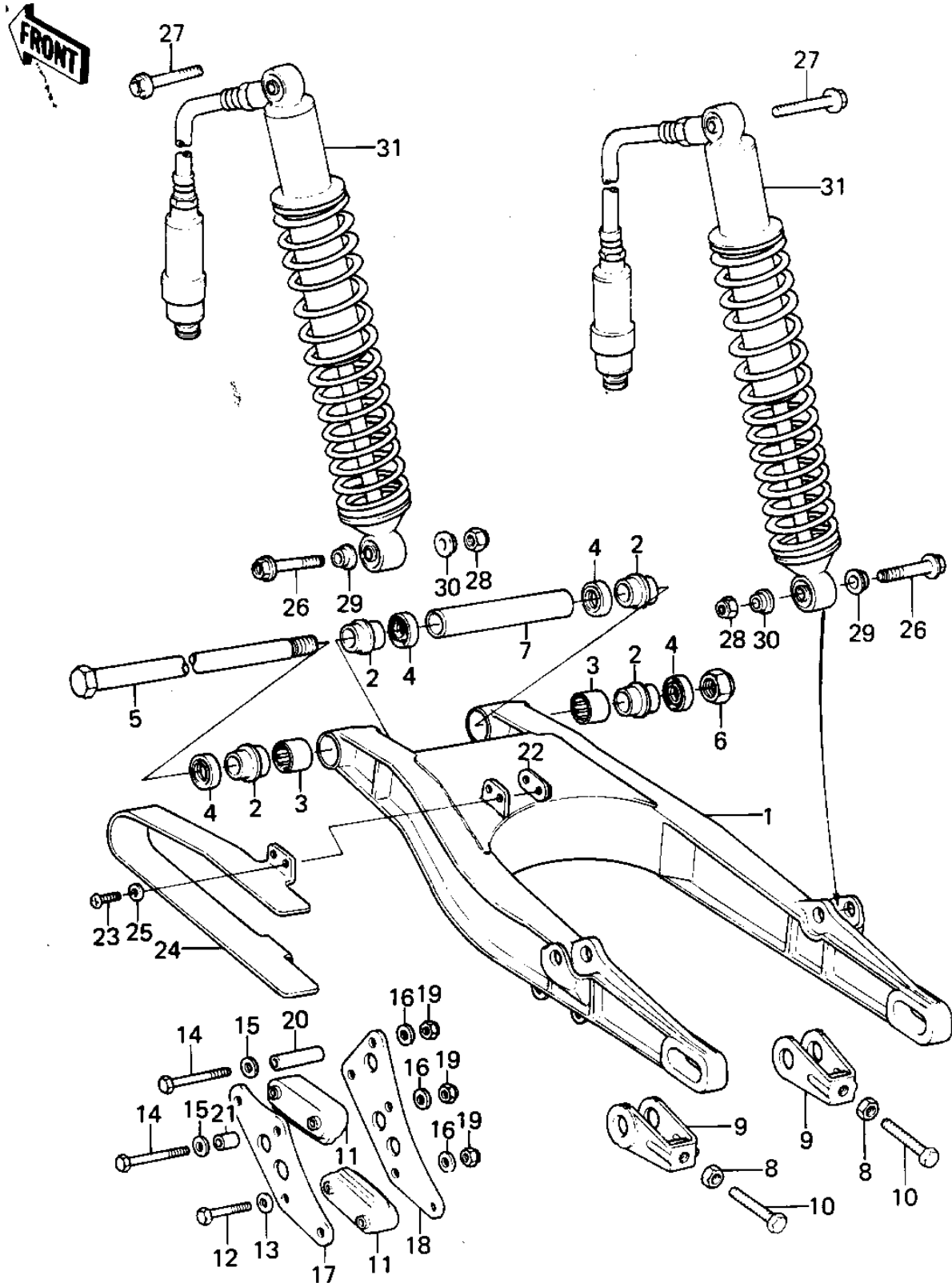


1979 KLX250 PARTS DIAGRAM

SWING ARM/SHOCK ABSORBERS



1979 KLX250 PARTS LIST

SWING ARM/SHOCK ABSORBERS

| ITEM NAME | PART NUMBER | QUANTITY |
|--------------------------------|-------------|----------|
| ARM,SWING (Ref # 1) | 33001-1041 | 1 |
| SLEEVE,SWING ARM (Ref # 2) | 42036-1026 | 4 |
| BEARING,NEEDLE (Ref # 3) | 92046-1001 | 2 |
| OIL SEAL (Ref # 4) | 92049-1011 | 4 |
| SHAFT,SWING ARM (Ref # 5) | 33032-1012 | 1 |
| NUT-LOCK,14MM (Ref # 6) | 92019-011 | 1 |
| SPACER,SWING ARM (Ref # 7) | 92026-1014 | 1 |
| NUT 8MM (Ref # 8) | 318G0800 | 2 |
| ADJUSTER,CHAIN (Ref # 9) | 33040-4001 | 2 |
| BOLT,CHAIN ADJUSTER (Ref # 10) | 92001-1027 | 2 |
| GUIDE,CHAIN (Ref # 11) | 12053-1033 | 2 |
| BOLT-UPSET,6X40 (Ref # 12) | 112G0640 | 2 |
| WASHER PLAIN 6MM (Ref # 13) | 411B0600 | 2 |
| BOLT-UPSET (Ref # 14) | 112G0660 | 3 |
| WASHER PLAIN 6MM (Ref # 15) | 411B0600 | 3 |
| WASHER PLAIN 6MM (Ref # 16) | 411B0600 | 5 |
| GUARD,CHAIN,OUTER (Ref # 17) | 55020-1033 | 1 |
| GUARD,CHAIN,INNER (Ref # 18) | 55020-1034 | 1 |
| NUT (Ref # 19) | 92019-008 | 5 |
| COLLAR,6.8X10X37.5L (Ref # 20) | 92027-1209 | 1 |
| COLLAR,6.8X10X11.5L (Ref # 21) | 92027-1210 | 2 |
| PLATE (Ref # 22) | 13169-4004 | 2 |
| SCREW PAN HEAD 6X16 (Ref # 23) | 220B0616 | 4 |
| GUARD,CHAIN (Ref # 24) | 55020-1035 | 1 |
| WASHER-PLAIN,7MM (Ref # 25) | 92022-240 | 4 |
| BOLT,HEX HEAD,10X48 (Ref # 26) | 92001-1029 | 2 |
| BOLT,HEX HEAD,6X10 (Ref # 27) | 92001-1034 | 2 |
| NUT,LOCK,10MM (Ref # 28) | 92019-021 | 2 |
| COLLAR (Ref # 29) | 92027-1029 | 2 |