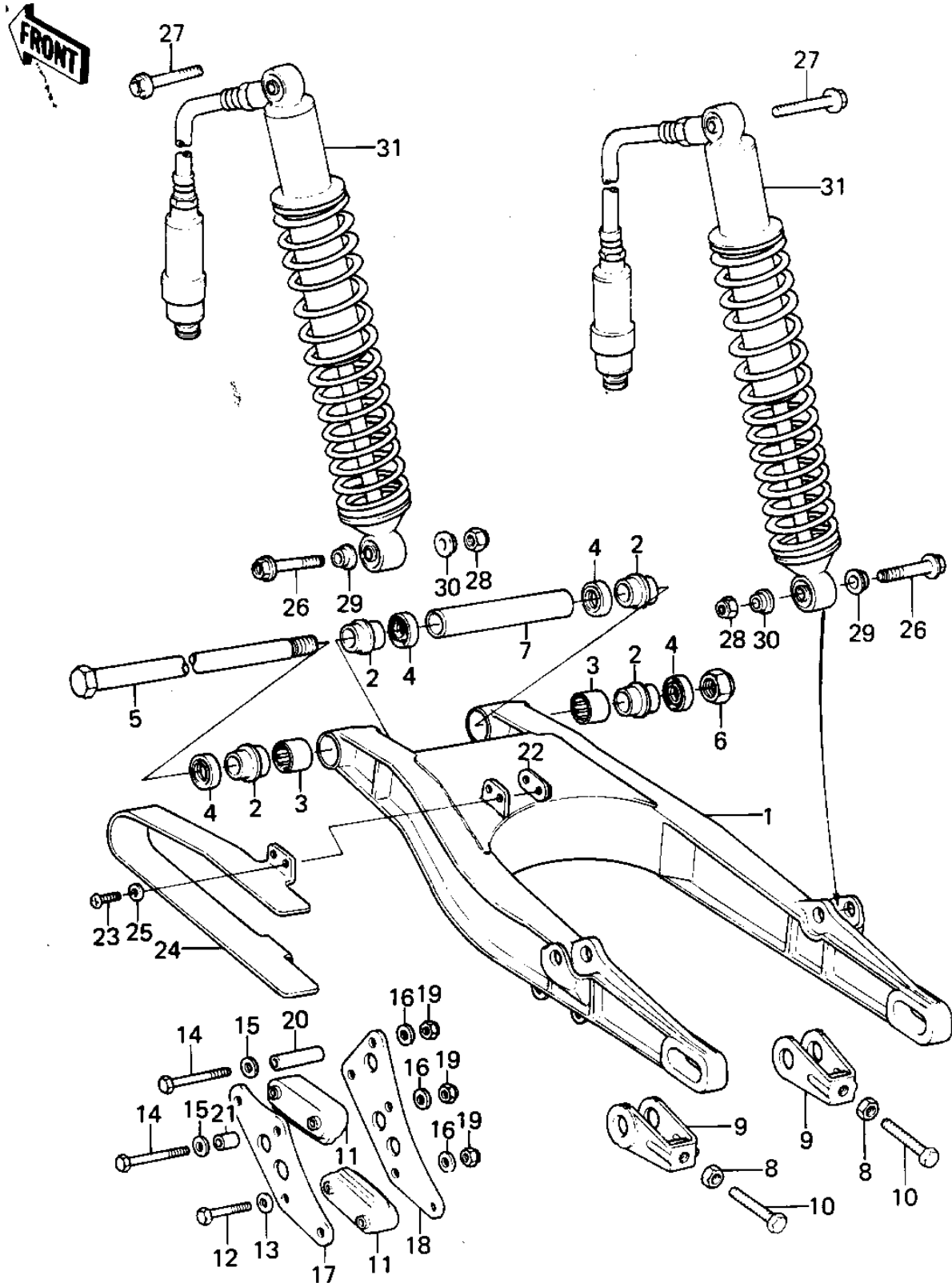


# 1980 KLX250 PARTS DIAGRAM

## SWING ARM/SHOCK ABSORBERS



# 1980 KLX250 PARTS LIST

## SWING ARM/SHOCK ABSORBERS

| ITEM NAME                      | PART NUMBER | QUANTITY |
|--------------------------------|-------------|----------|
| ARM,SWING (Ref # 1)            | 33001-1041  |          |
| SLEEVE,SWING ARM (Ref # 2)     | 42036-1026  |          |
| BEARING,NEEDLE (Ref # 3)       | 92046-1001  |          |
| OIL SEAL (Ref # 4)             | 92049-1011  |          |
| SHAFT,SWING ARM (Ref # 5)      | 33032-1012  |          |
| NUT-LOCK,14MM (Ref # 6)        | 92019-011   |          |
| SPACER,SWING ARM (Ref # 7)     | 92026-1014  |          |
| NUT 8MM (Ref # 8)              | 318G0800    |          |
| ADJUSTER,CHAIN (Ref # 9)       | 33040-4001  |          |
| BOLT,CHAIN ADJUSTER (Ref # 10) | 92001-1027  |          |
| GUIDE,CHAIN (Ref # 11)         | 12053-1033  |          |
| BOLT-UPSET,6X40 (Ref # 12)     | 112G0640    |          |
| WASHER PLAIN 6MM (Ref # 13)    | 411B0600    |          |
| BOLT-UPSET (Ref # 14)          | 112G0660    |          |
| WASHER PLAIN 6MM (Ref # 15)    | 411B0600    |          |
| WASHER PLAIN 6MM (Ref # 16)    | 411B0600    |          |
| GUARD,CHAIN,OUTER (Ref # 17)   | 55020-1033  |          |
| GUARD,CHAIN,INNER (Ref # 18)   | 55020-1034  |          |
| NUT (Ref # 19)                 | 92019-008   |          |
| COLLAR,6.8X10X37.5L (Ref # 20) | 92027-1209  |          |
| COLLAR,6.8X10X11.5L (Ref # 21) | 92027-1210  |          |
| PLATE (Ref # 22)               | 13169-4004  |          |
| SCREW PAN HEAD 6X16 (Ref # 23) | 220B0616    |          |
| GUARD,CHAIN (Ref # 24)         | 55020-1035  |          |
| WASHER-PLAIN,7MM (Ref # 25)    | 92022-240   |          |
| BOLT,HEX HEAD,10X48 (Ref # 26) | 92001-1029  |          |
| BOLT,HEX HEAD,6X10 (Ref # 27)  | 92001-1034  |          |
| NUT,LOCK,10MM (Ref # 28)       | 92019-021   |          |
| COLLAR (Ref # 29)              | 92027-1029  |          |