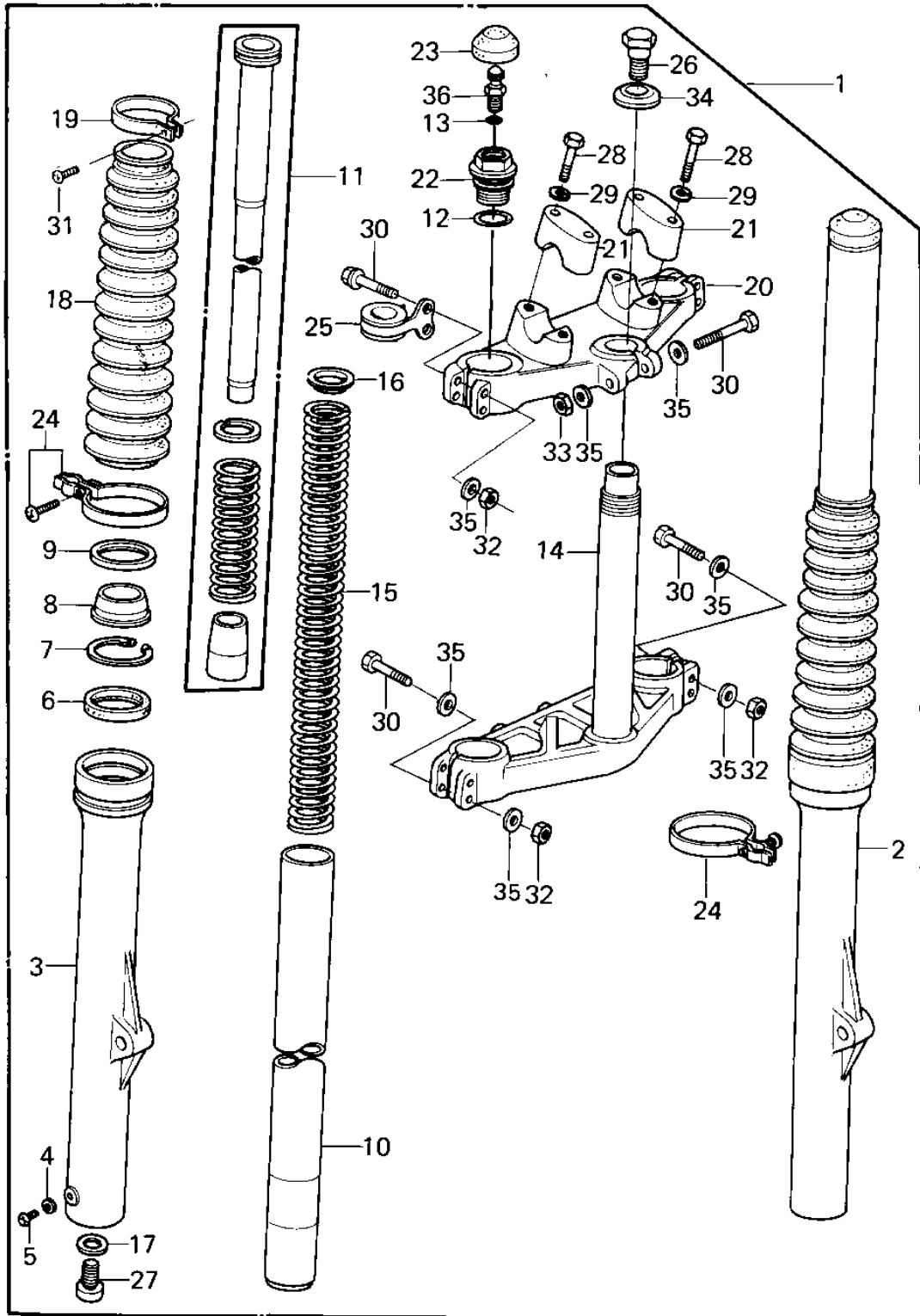


# 1980 KLX250 PARTS DIAGRAM

FRONT FORK (KLX250-A2)



# 1980 KLX250 PARTS LIST

## FRONT FORK (KLX250-A2)

ITEM NAME	PART NUMBER	QUANTITY
FORK-FRONT (Ref # 1)	44001-1145	
TUBE,RH,FORK OUTER (Ref # 2)	44006-1030	
TUBE,LH,FORK OUTER (Ref # 3)	44005-1030	
GASKET FORK DRAIN PLG (Ref # 4)	44045-002	
SCREW PAN HEAD 4X8 (Ref # 5)	220B0408	
OIL,SEAL,FORK OUTER (Ref # 6)	92049-1009	
RING,SNAP,FORK OUTER (Ref # 7)	92033-1005	
DUST SHIELD,FORK (Ref # 8)	92093-1007	
CASE,DUST SHIELD (Ref # 9)	32099-1002	
TUBE,FORK INNER (Ref # 10)	44013-1026	
CYLINDER-FORK (Ref # 1)	44022-1030	
"0" RING,FORK TOP (Ref # 12)	92055-1051	
"0" RING,AIR VALVE (Ref # 13)	92055-1018	
STEM,STEERING (Ref # 14)	44037-1021	
SPRING,FORK (Ref # 15)	44026-1038	
GUIDE,FORK SPRING (Ref # 16)	44028-1004	
GASKET,FORK CYLINDER (Ref # 17)	44045-057	
BOOTS,FORK (Ref # 18)	49006-1009	
BAND,BOOTS (Ref # 19)	92072-1008	
HEAD,STEERING STEM (Ref # 20)	44039-1018	
HOLDER,HANDLE BAR (Ref # 21)	46012-1003	
CAP,FORK TOP (Ref # 22)	44029-1011	
CAP,RUBBER,FORK TOP (Ref # 23)	44029-1009	
BAND,BOOTS L.H. (Ref # 24)	92072-1011	
CLAMP,CABLE (Ref # 25)	92072-1040	
BOLT,FORK TOP (Ref # 26)	44041-065	
BOLT-FORK CYLINDER (Ref # 27)	44041-040	
BOLT (Ref # 28)	92001-1578	
WASHER SPRING 8MM (Ref # 29)	461F0800	

# 1980 KLX250 PARTS LIST

## FRONT FORK (KLX250-A2)

ITEM NAME	PART NUMBER	QUANTITY
SCREW-PAN-CROS (Ref # 30)	220B0420	
SCREW-PAN-CROS (Ref # 31)	220B0420	
NUT 8MM (Ref # 32)	311G0800	
NUT,LOCK,8MM (Ref # 33)	92015-1124	
WASHER (Ref # 34)	44043-052	
WASHER PLAIN 8MM (Ref # 35)	410B0800	
VALVE ASSY,AIR (Ref # 36)	16126-1003	