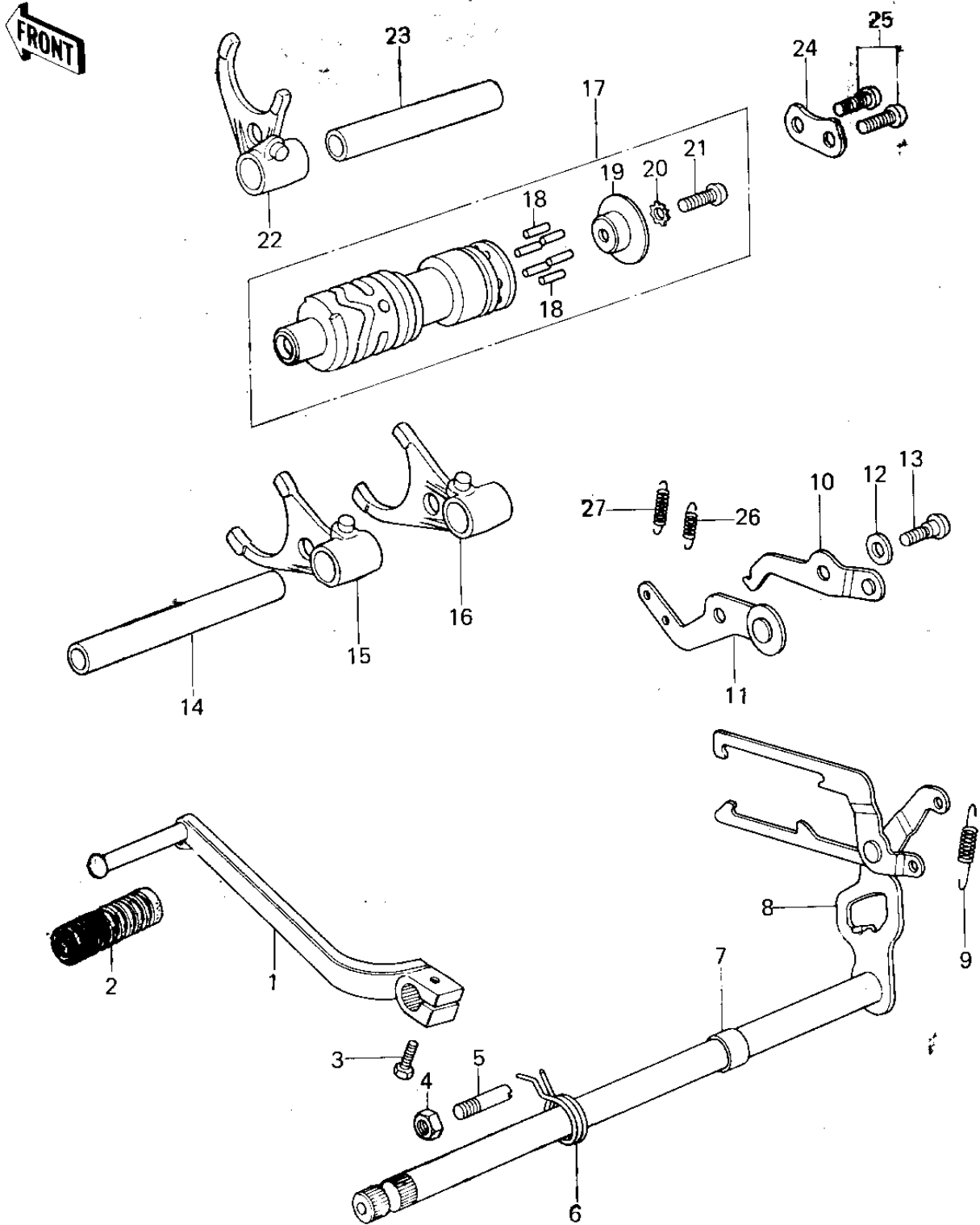


1978 KX250-A4 PARTS DIAGRAM

GEAR CHANGE MECHANISM (78-79)



1978 KX250-A4 PARTS LIST

GEAR CHANGE MECHANISM (78-79)

ITEM NAME	PART NUMBER	QUANTITY
PEDAL ASSY, CHANGE (Ref # 1)	13156-1008	1
DAMPER, CHANGE PEDAL (Ref # 2)	92160-1108	1
BOLT-UPSET, 6X20 (Ref # 3)	112G0620	1
NUT 8MM (Ref # 4)	312B0800	1
BOLT, RETURN SPRING (Ref # 5)	92001-1401	1
SPRING, TENSION (Ref # 6)	92081-1129	1
COLLAR (Ref # 7)	92027-189	1
LEVER ASSY, GEAR CHANGE (Ref # 8)	13161-1003	1
SPRING-CHANGE LEVER (Ref # 9)	92081-076	1
LEVER ASSY, GEAR CHANGE (Ref # 10)	13236-007	1
LEVER, CHANGE DRUM (Ref # 11)	13236-1001	1
WASHER, PLAIN (Ref # 12)	92022-1053	1
SCREW-PAN HEAD (Ref # 13)	92011-023	1
ROD, SHIFT 93.7M/M (Ref # 14)	49047-1003	1
SHIFT FORK, 2ND & 3RD (Ref # 15)	13140-1004	1
SHIFT FORK, LOW (Ref # 16)	13140-1003	1
DRUM ASSY, GEAR CHANGE (Ref # 17)	13239-1003	1
PIN, CHANGE DRUM (Ref # 18)	92042-029	6
HOLDER, CHANGE DRUM (Ref # 19)	13142-014	1
WASHER LOCK 6MM (Ref # 20)	464H0600	1
SCREW PAN HEAD 6X14 (Ref # 21)	220B0614	1
SHIFT FORK, 4TH & TOP (Ref # 22)	13140-1005	1
ROD, SHIFT 71.7M/M (Ref # 23)	49047-1002	1
PLATE, CHANGE DRUM (Ref # 24)	13169-012	1
SCREW PAN HEAD 6X14 (Ref # 25)	220B0614	2
SPRING-COIL (Ref # 26)	92081-091	1
SPRING (Ref # 27)	92081-119	1