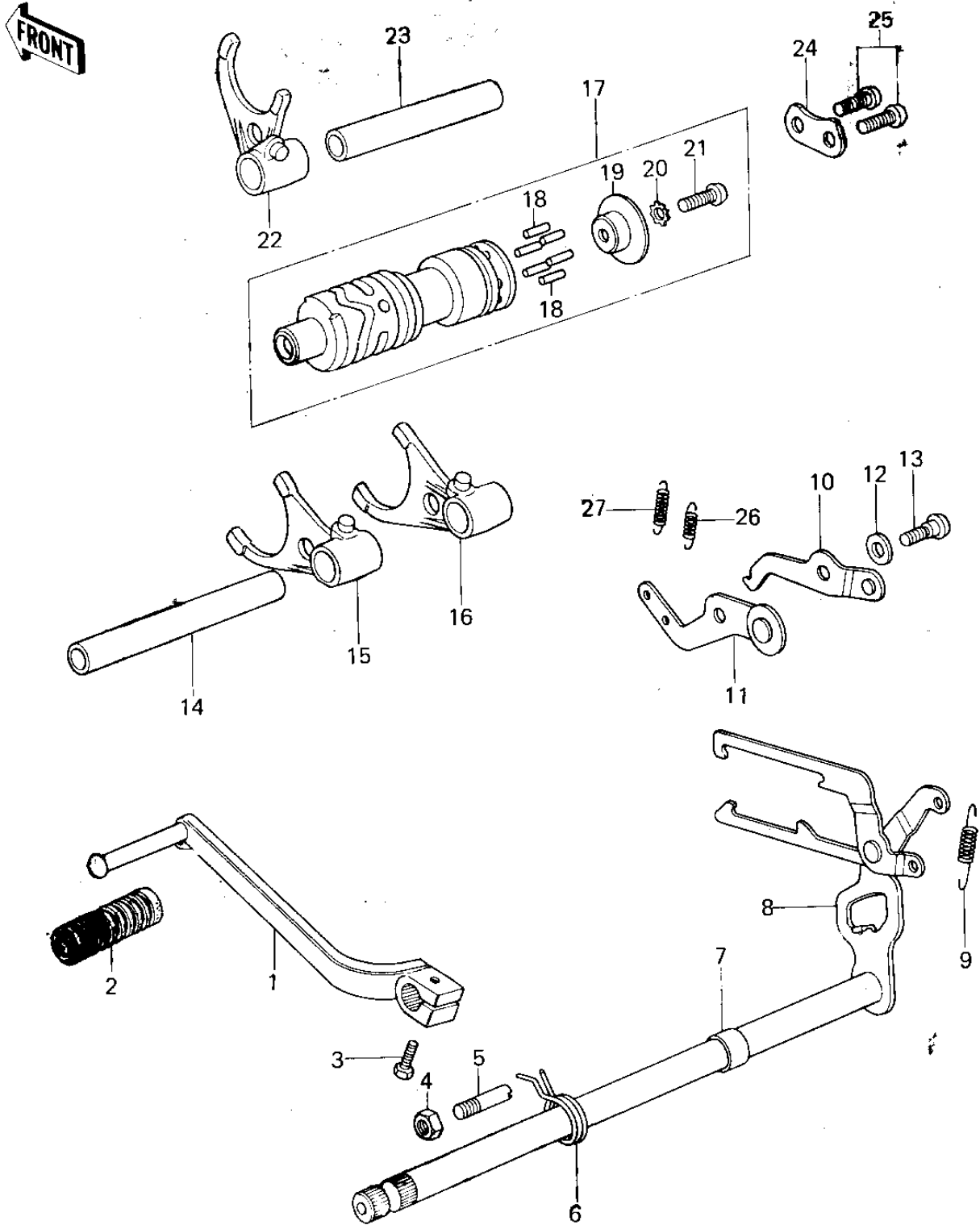


1979 KX250-A5 PARTS DIAGRAM

GEAR CHANGE MECHANISM (78-79)



1979 KX250-A5 PARTS LIST

GEAR CHANGE MECHANISM (78-79)

ITEM NAME	PART NUMBER	QUANTITY
PEDAL,ASSY,CHANGE (Ref # 1)	13156-1008	
DAMPER,CHANGE PEDAL (Ref # 2)	92160-1108	
BOLT-UPSET,6X20 (Ref # 3)	112G0620	
NUT 8MM (Ref # 4)	312B0800	
BOLT,RETURN SPRING (Ref # 5)	92001-1401	
SPRING,TENSION (Ref # 6)	92081-1129	
COLLAR (Ref # 7)	92027-189	
LEVER ASSY,GEAR CHANG (Ref # 8)	13161-1003	
SPRING-CHANGE LEVER (Ref # 9)	92081-076	
LEVER ASSY,GEAR CHANG (Ref # 10)	13236-007	
LEVER,CHANGE DRUM (Ref # 11)	13236-1001	
WASHER,PLAIN (Ref # 12)	92022-1053	
SCREW-PAN HEAD (Ref # 13)	92011-023	
ROD,SHIFT 93.7M/M (Ref # 14)	49047-1003	
SHIFT FORK,2ND & 3RD (Ref # 15)	13140-1004	
SHIFT FORK,LOW (Ref # 16)	13140-1003	
DRUM ASSY,GEAR CHANGE (Ref # 17)	13239-1003	
PIN,CHANG DRUM (Ref # 18)	92042-029	
HOLDER,CHANGE DRUM (Ref # 19)	13142-014	
WASHER LOCK 6MM (Ref # 20)	464H0600	
SCREW PAN HEAD 6X14 (Ref # 21)	220B0614	
SHIFT FORK,4TH & TOP (Ref # 22)	13140-1005	
ROD,SHIFT 71.7M/M (Ref # 23)	49047-1002	
PLATE,CHANGE DRUM (Ref # 24)	13169-012	
SCREW PAN HEAD 6X14 (Ref # 25)	220B0614	
SPRING-COIL (Ref # 26)	92081-091	
SPRING (Ref # 27)	92081-119	