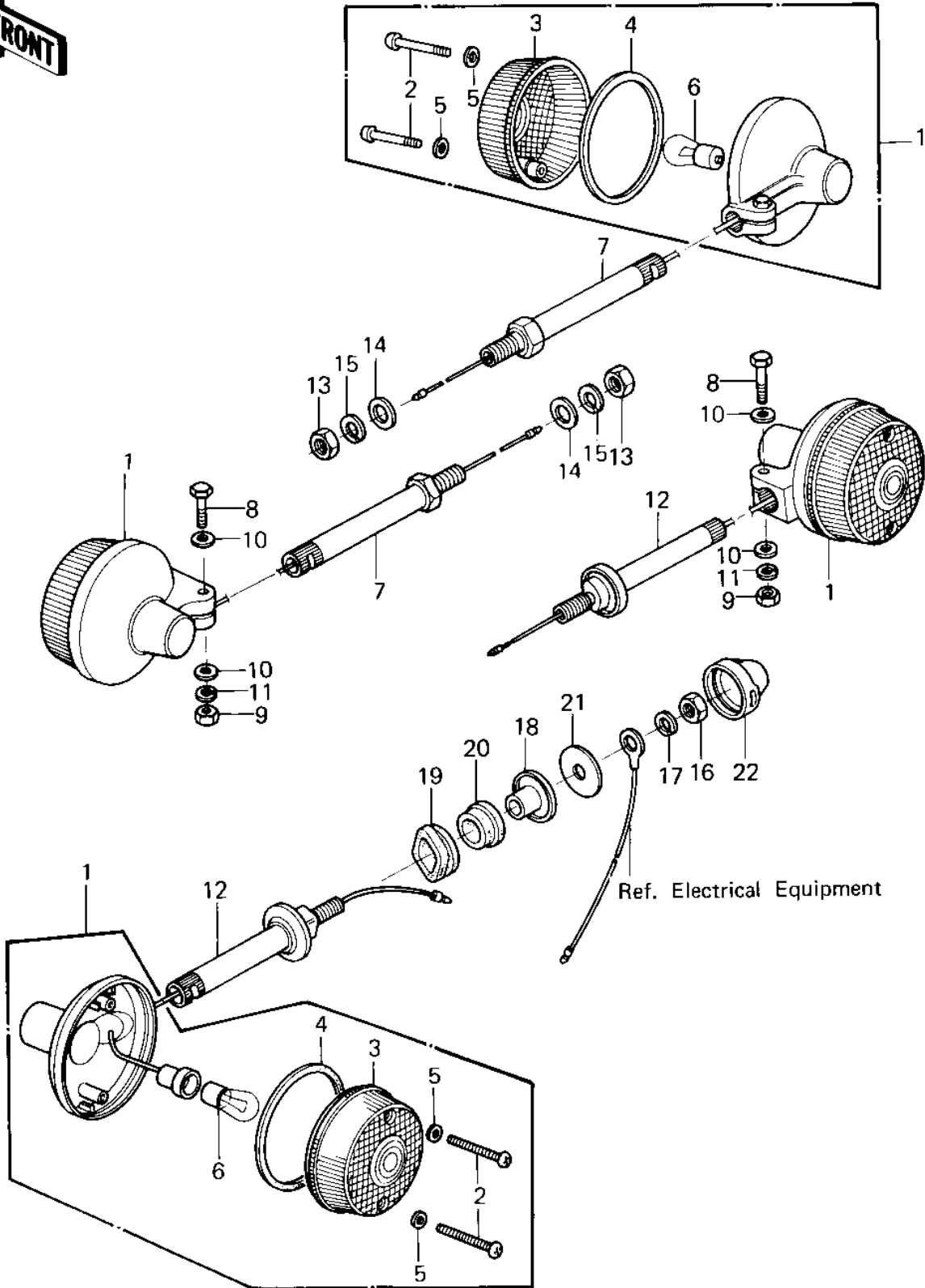


1980 KZ250 PARTS DIAGRAM

TURN SIGNALS ('80 D1)



1980 KZ250 PARTS LIST

TURN SIGNALS ('80 D1)

ITEM NAME	PART NUMBER	QUANTITY
LAMP,FRNT TURN SIGNAL (Ref # 1)	23040-1024	4
SCREW-PAN HEAD,4X20 (Ref # 2)	220E0420A	8
LENS,TURN SIGNAL LAMP (Ref # 3)	23048-1001	4
GASKET-SIG LAMP LENS (Ref # 4)	23050-003	4
WASHER-PLAIN,4MM (Ref # 5)	23058-002	8
BULB 12V 32CP (Ref # 6)	92069-055	4
BRACKET,SIGNAL LAMP (Ref # 7)	23051-1024	2
BOLT-UPSET (Ref # 8)	112G0630	4
NUT 6MM (Ref # 9)	311B0600	4
WASHER, PLAIN, 6 M/M (Ref # 10)	411B0600	8
WASHER SPRING 6MM (Ref # 11)	461F0600	4
BRACKET,TURN SIGNAL (Ref # 12)	23051-1014	2
NUT 10MM (Ref # 13)	315B1000	2
WASHER-PLAIN,10MM (Ref # 14)	411D1000	2
WASHER SPRING 10MM (Ref # 15)	461F1000	2
NUT 10MM (Ref # 16)	315B1000	2
WASHER SPRING 10MM (Ref # 17)	461F1000	2
COLLAR (Ref # 18)	92027-147	2
DAMPER RUBBER (Ref # 19)	92075-128	2
DAMPER RUBBER,SIG LM (Ref # 20)	92075-158	2
WASHER,PLAIN (Ref # 21)	92022-327	2
RUBBER CAP (Ref # 22)	92073-036	2