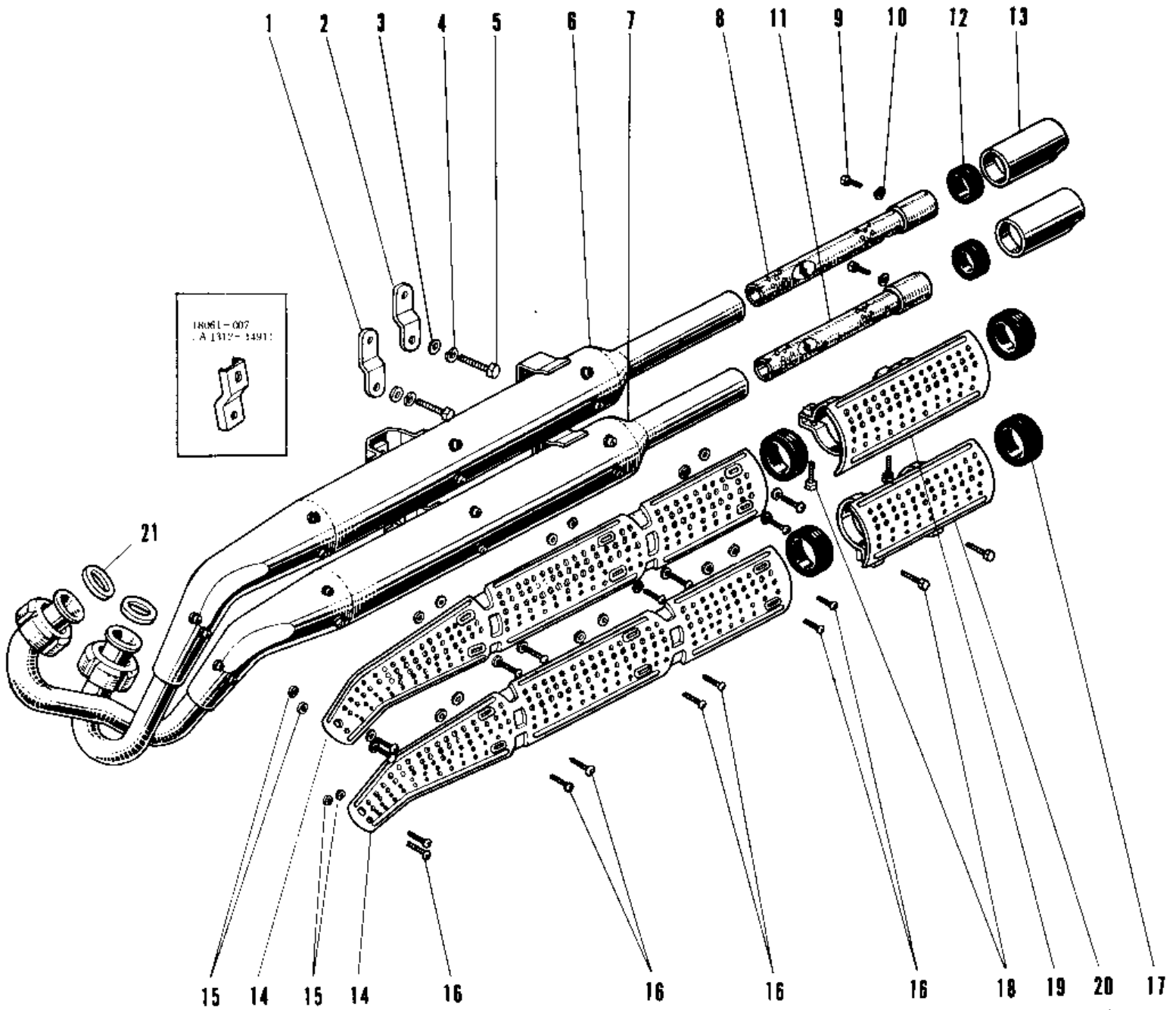


# 1968 Samurai PARTS DIAGRAM

MUFFLER A1SS UNIT TYPE.



# 1968 Samurai PARTS LIST

MUFFLER A1SS UNIT TYPE.

ITEM NAME	PART NUMBER	QUANTITY
BRACKET LOWER MUFFLER (Ref # 1)	18061-008	1
BRACKET UPPER MUFFLER (Ref # 2)	18061-007	1
WASHER PLAIN 8MM (Ref # 3)	410B0800	2
WASHER SPRING 8MM (Ref # 4)	461F0800	2
BOLT,8X20 (Ref # 5)	115G0820	2
MUFFLER ASSY UPPER (Ref # 6,8~10)	18002-021	1
MUFFLER ASSY LOWER (Ref # 7,9~11)	18003-003	1
BAFFLE TUBE UPPER (Ref # 8)	18033-016	1
BOLT-UPSET,6X12 (Ref # 9)	112G0612	2
WASHER SPRING 6MM (Ref # 10)	461F0600	2
BAFFLE TUBE LOWER (Ref # 11)	18033-017	1
RUBBER SEAL (Ref # 12)	18068-003	2
TAIL PIECE (Ref # 13)	18048-004	2
COVER MUFFLER UPPER (Ref # 14)	18057-009	2
INSULATOR HEAT (Ref # 15)	92065-024	16
INSULATOR (Ref # 15)	18065-006	16
SCREW PAN HEAD 6X8 (Ref # 16)	220E0608	16
BAND RUBBER 40MM (Ref # 17)	92072-025	4
SCREW PAN HEAD 6X16 (Ref # 18)	220B0616	4
COVER UPPER TAIL PIPE (Ref # 19)	18057-017	1
COVER LOWER TAIL PIPE (Ref # 20)	18057-018	1
GASKET EXHAUST PIPE (Ref # 21)	18067-008	2