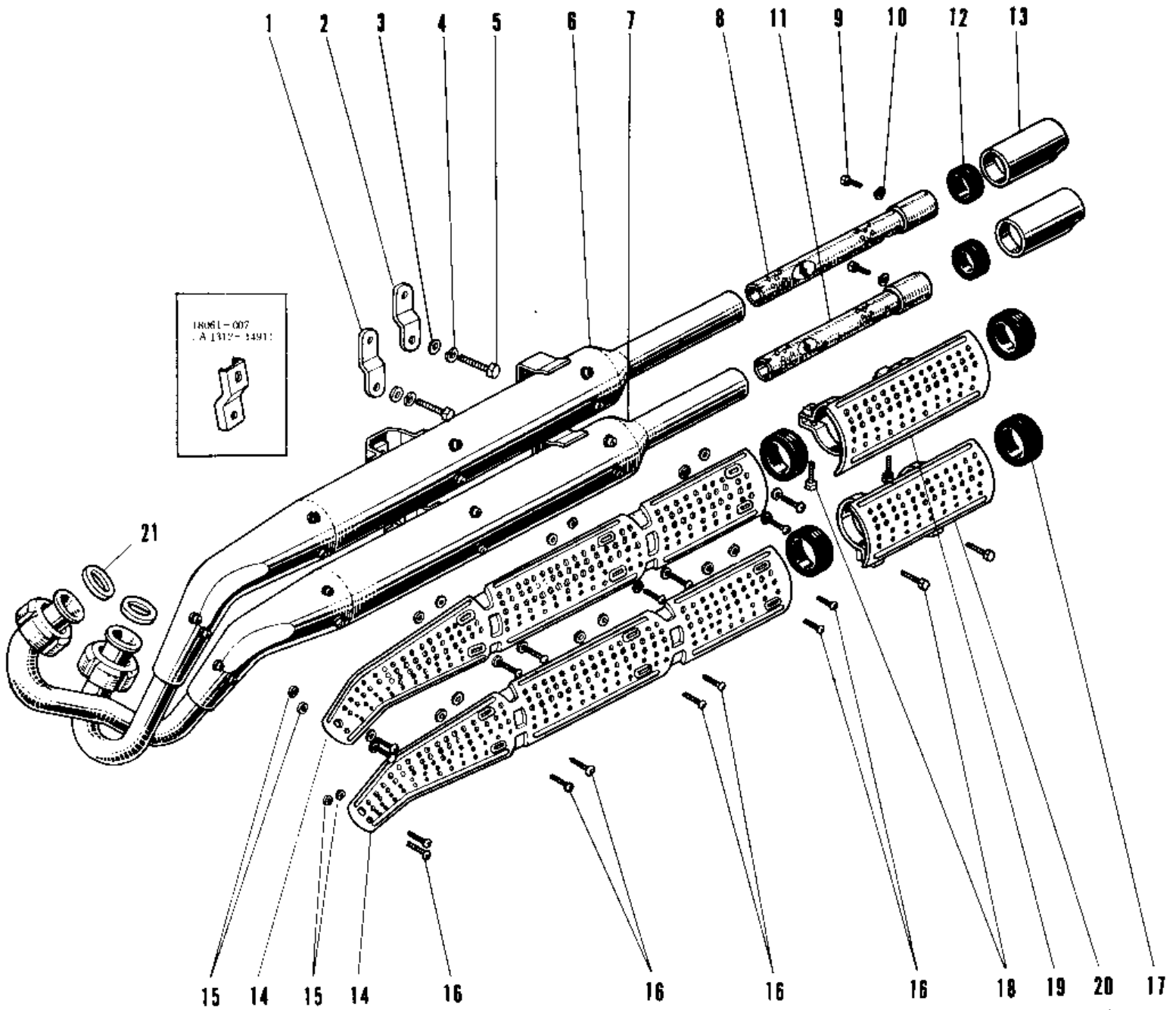


1969 Avenger SS PARTS DIAGRAM

MUFFLER A1SS UNIT TYPE.



1969 Avenger SS PARTS LIST

MUFFLER A1SS UNIT TYPE.

| ITEM NAME | PART NUMBER | QUANTITY |
|-----------------------------------|-------------|----------|
| BRACKET LOWER MUFFLER (Ref # 1) | 18061-008 | 1 |
| BRACKET UPPER MUFFLER (Ref # 2) | 18061-007 | 1 |
| WASHER PLAIN 8MM (Ref # 3) | 410B0800 | 2 |
| WASHER SPRING 8MM (Ref # 4) | 461F0800 | 2 |
| BOLT,8X20 (Ref # 5) | 115G0820 | 2 |
| MUFFLER ASSY UPPER (Ref # 6,8~10) | 18002-021 | 1 |
| MUFFLER ASSY LOWER (Ref # 7,9~11) | 18003-003 | 1 |
| BAFFLE TUBE UPPER (Ref # 8) | 18033-016 | 1 |
| BOLT-UPSET,6X12 (Ref # 9) | 112G0612 | 2 |
| WASHER SPRING 6MM (Ref # 10) | 461F0600 | 2 |
| BAFFLE TUBE LOWER (Ref # 11) | 18033-017 | 1 |
| RUBBER SEAL (Ref # 12) | 18068-003 | 2 |
| TAIL PIECE (Ref # 13) | 18048-004 | 2 |
| COVER MUFFLER UPPER (Ref # 14) | 18057-009 | 2 |
| INSULATOR HEAT (Ref # 15) | 92065-024 | 16 |
| INSULATOR (Ref # 15) | 18065-006 | 16 |
| SCREW PAN HEAD 6X8 (Ref # 16) | 220E0608 | 16 |
| BAND RUBBER 40MM (Ref # 17) | 92072-025 | 4 |
| SCREW PAN HEAD 6X16 (Ref # 18) | 220B0616 | 4 |
| COVER UPPER TAIL PIPE (Ref # 19) | 18057-017 | 1 |
| COVER LOWER TAIL PIPE (Ref # 20) | 18057-018 | 1 |
| GASKET EXHAUST PIPE (Ref # 21) | 18067-008 | 2 |