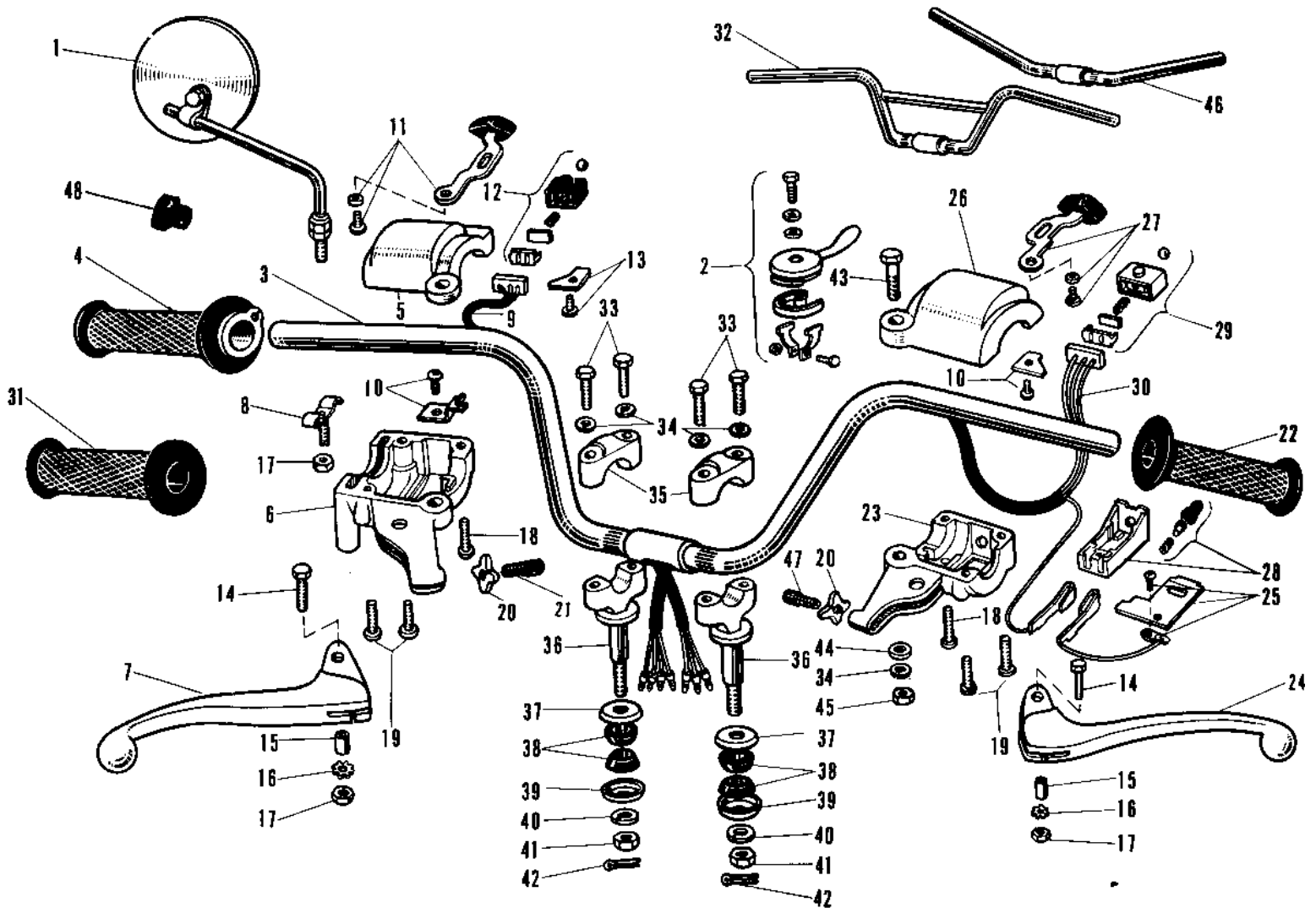


# 1966 Samurai PARTS DIAGRAM

HANDLEBAR A1/SSA, A7/SSA



# 1966 Samurai PARTS LIST

HANDLEBAR A1/SSA, A7/SSA

ITEM NAME	PART NUMBER	QUANTITY
REAR VIEW MIRROR (Ref # 1)	56001-005	1
LEVER ASSY,STARTER (Ref # 2)	46109-012	1
HANDLEBAR (Ref # 3)	46003-018	1
GRIP ASSY-R.H (Ref # 4~21)	46017-042	1
GRIP ASSY THROTTLE (Ref # 4)	46019-005	1
GRIP-ASSY,RH (Ref # 5)	46017-1071	1
CASE R.H SWITCH LOWER (Ref # 6)	46022-012	1
LEVER FRONT BRAKE (Ref # 7)	46058-004	1
SPRING THROTTLE GRIP (Ref # 8)	46024-002	1
WIRING HARNESS R.H SW (Ref # 9)	46032-010	1
HOLDER R.H SWITCH (Ref # 10)	46037-009	1
KNOB ASSY R.H SWITCH (Ref # 11)	46043-002	1
SLIDE BLOCK AY R.H SW (Ref # 12)	46045-004	1
HOLDER WIRING HARNESS (Ref # 13)	46085-012	2
BOLT HEX HEAD 5X20 (Ref # 14)	92007-020	2
COLLAR LEVER (Ref # 15)	46059-011	2
WASHER LOCK 5MM (Ref # 16)	464H0500	2
NUT 5MM (Ref # 17)	312B0500	3
SCREW PAN HEAD 5X18 (Ref # 18)	220B0518	2
SCREW PAN HEAD 5X20 (Ref # 19)	220B0520	4
NUT LOCK ADJUST SCREW (Ref # 20)	46056-001	2
SCREW CABLE ADJUST (Ref # 21)	46055-003	1
UNAVAILABLE IN PRICE BOOK (Ref # 14~20)	46074-020	1
RUBBER L.H GRIP (Ref # 22)	46075-007	1
CASE L.H SWITCH LOWER (Ref # 23)	46077-008	1
LEVER-CLUTCH (Ref # 24)	46092-015	1
HOLDER L.H SWITCH (Ref # 25)	46085-008	1
CASE L.H SWITCH UPPER (Ref # 26)	46086-007	1
KNOB ASSY L.H SWITCH (Ref # 27)	46088-001	1

# 1966 Samurai PARTS LIST

HANDLEBAR A1/SSA, A7/SSA

ITEM NAME	PART NUMBER	QUANTITY
SWITCH ASSY LH BUTTON (Ref # 28)	46078-003	1
SLIDE BLOCK AY L.H SW (Ref # 29)	46089-002	1
WIRING HARNESS L.H SW (Ref # 30)	46082-011	1
RUBBER R.H GRIP (Ref # 31)	46061-009	1
BOLT 8X38 (Ref # 33)	92001-1405	4
WASHER SPRING 8MM (Ref # 34)	461F0800	5
HOLDER UPPER HANDLEBAR (Ref # 35)	46012-004	2
HOLDER HANDLEBAR LOW (Ref # 36)	46012-007	2
CAP HANDLEBAR HOLDER (Ref # 37)	46016-003	2
DAMPER RUBBER HANDLE (Ref # 38)	92075-039	4
CAP HANDLEBAR HOLDER (Ref # 39)	46016-003	2
WASHER SPRING 10MM (Ref # 40)	461F1000	2
NUT,10MM (Ref # 41)	314B1000	2
PIN COTTER 2.5X20 (Ref # 42)	550D2520	2
BOLT HEX HEAD 8X40 (Ref # 43)	116B0840	1
WASHER PLAIN 8MM (Ref # 44)	410B0800	1
NUT,8MM (Ref # 45)	311B0800	1
HANDLEBAR,LOW (Ref # 46)	46005-006	1
SCREW,CABLE ADJUST (Ref # 47)	46055-010	1
PLUG B HANDLEBAR (Ref # 48)	56019-048	1