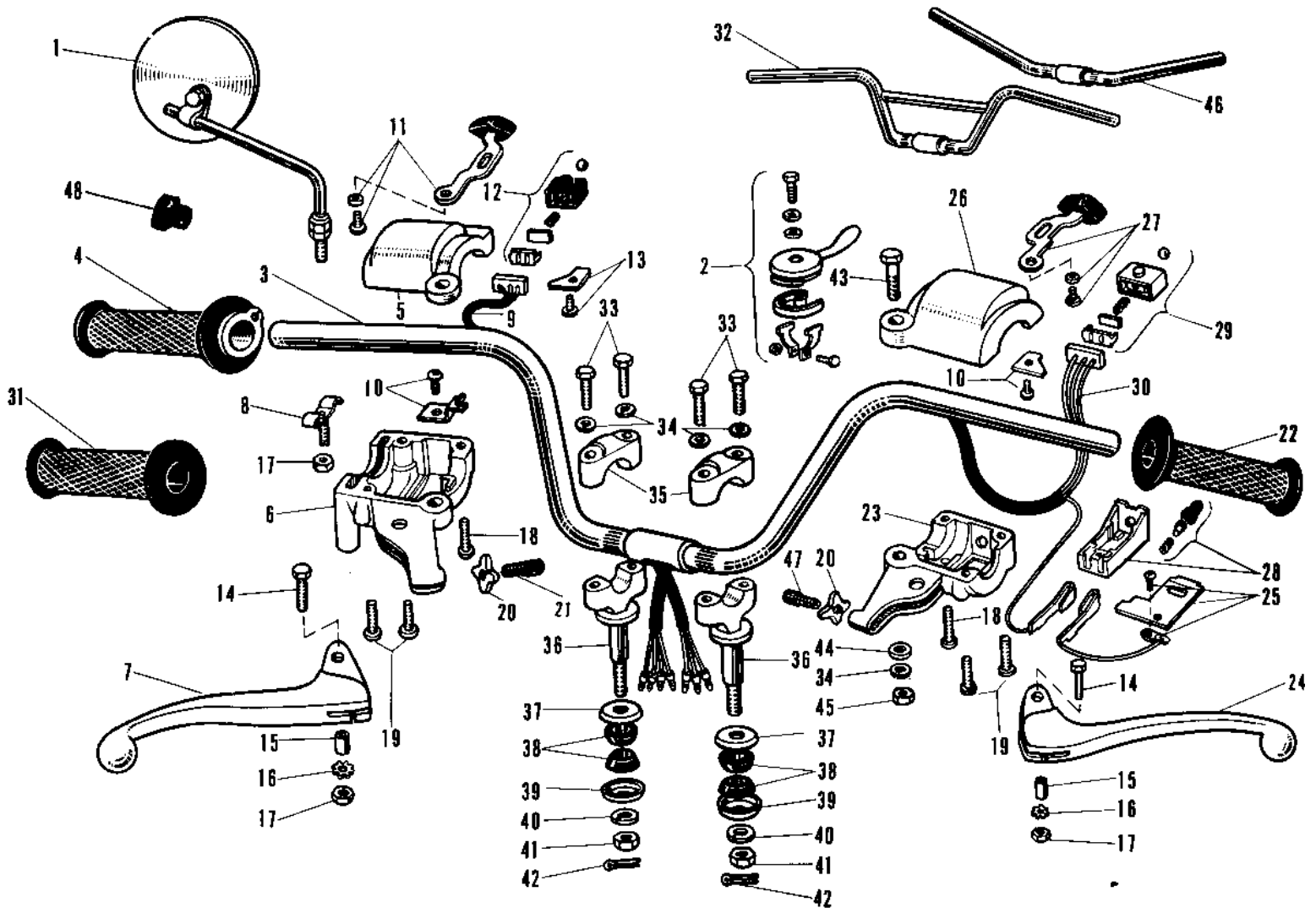


1969 A1SS PARTS DIAGRAM

HANDLEBAR A1/SSA, A7/SSA



1969 A1SS PARTS LIST

HANDLEBAR A1/SSA, A7/SSA

| ITEM NAME | PART NUMBER | QUANTITY |
|---|-------------|----------|
| REAR VIEW MIRROR (Ref # 1) | 56001-005 | 1 |
| LEVER ASSY,STARTER (Ref # 2) | 46109-012 | 1 |
| GRIP ASSY-R.H (Ref # 4~21) | 46017-042 | 1 |
| GRIP ASSY THROTTLE (Ref # 4) | 46019-005 | 1 |
| GRIP-ASSY,RH (Ref # 5) | 46017-1071 | 1 |
| CASE R.H SWITCH LOWER (Ref # 6) | 46022-012 | 1 |
| LEVER FRONT BRAKE (Ref # 7) | 46058-004 | 1 |
| SPRING THROTTLE GRIP (Ref # 8) | 46024-002 | 1 |
| WIRING HARNESS R.H SW (Ref # 9) | 46032-010 | 1 |
| HOLDER R.H SWITCH (Ref # 10) | 46037-009 | 1 |
| KNOB ASSY R.H SWITCH (Ref # 11) | 46043-002 | 1 |
| SLIDE BLOCK AY R.H SW (Ref # 12) | 46045-004 | 1 |
| HOLDER WIRING HARNESS (Ref # 13) | 46085-012 | 2 |
| BOLT HEX HEAD 5X20 (Ref # 14) | 92007-020 | 2 |
| COLLAR LEVER (Ref # 15) | 46059-011 | 2 |
| WASHER LOCK 5MM (Ref # 16) | 464H0500 | 2 |
| NUT 5MM (Ref # 17) | 312B0500 | 3 |
| SCREW PAN HEAD 5X18 (Ref # 18) | 220B0518 | 2 |
| SCREW PAN HEAD 5X20 (Ref # 19) | 220B0520 | 4 |
| NUT LOCK ADJUST SCREW (Ref # 20) | 46056-001 | 2 |
| SCREW CABLE ADJUST (Ref # 21) | 46055-003 | 1 |
| UNAVAILABLE IN PRICE BOOK (Ref # 14~20) | 46074-020 | 1 |
| RUBBER L.H GRIP (Ref # 22) | 46075-007 | 1 |
| CASE L.H SWITCH LOWER (Ref # 23) | 46077-008 | 1 |
| LEVER-CLUTCH (Ref # 24) | 46092-015 | 1 |
| HOLDER L.H SWITCH (Ref # 25) | 46085-008 | 1 |
| CASE L.H SWITCH UPPER (Ref # 26) | 46086-007 | 1 |
| KNOB ASSY L.H SWITCH (Ref # 27) | 46088-001 | 1 |
| SWITCH ASSY LH BUTTON (Ref # 28) | 46078-003 | 1 |

1969 A1SS PARTS LIST

HANDLEBAR A1/SSA, A7/SSA

| ITEM NAME | PART NUMBER | QUANTITY |
|-----------------------------------|-------------|----------|
| SLIDE BLOCK AY L.H SW (Ref # 29) | 46089-002 | 1 |
| WIRING HARNESS L.H SW (Ref # 30) | 46082-011 | 1 |
| RUBBER R.H GRIP (Ref # 31) | 46061-009 | 1 |
| HANDLEBAR (Ref # 32) | 46004-014 | 1 |
| BOLT 8X38 (Ref # 33) | 92001-1405 | 4 |
| WASHER SPRING 8MM (Ref # 34) | 461F0800 | 5 |
| HOLDER UPPER HANDLEBAR (Ref # 35) | 46012-004 | 2 |
| HOLDER HANDLEBAR LOW (Ref # 36) | 46012-007 | 2 |
| CAP HANDLEBAR HOLDER (Ref # 37) | 46016-003 | 2 |
| DAMPER RUBBER HANDLE (Ref # 38) | 92075-039 | 4 |
| CAP HANDLEBAR HOLDER (Ref # 39) | 46016-003 | 2 |
| WASHER SPRING 10MM (Ref # 40) | 461F1000 | 2 |
| NUT,10MM (Ref # 41) | 314B1000 | 2 |
| PIN COTTER 2.5X20 (Ref # 42) | 550D2520 | 2 |
| BOLT HEX HEAD 8X40 (Ref # 43) | 116B0840 | 1 |
| WASHER PLAIN 8MM (Ref # 44) | 410B0800 | 1 |
| NUT,8MM (Ref # 45) | 311B0800 | 1 |
| SCREW,CABLE ADJUST (Ref # 47) | 46055-010 | 1 |
| PLUG B HANDLEBAR (Ref # 48) | 56019-048 | 1 |