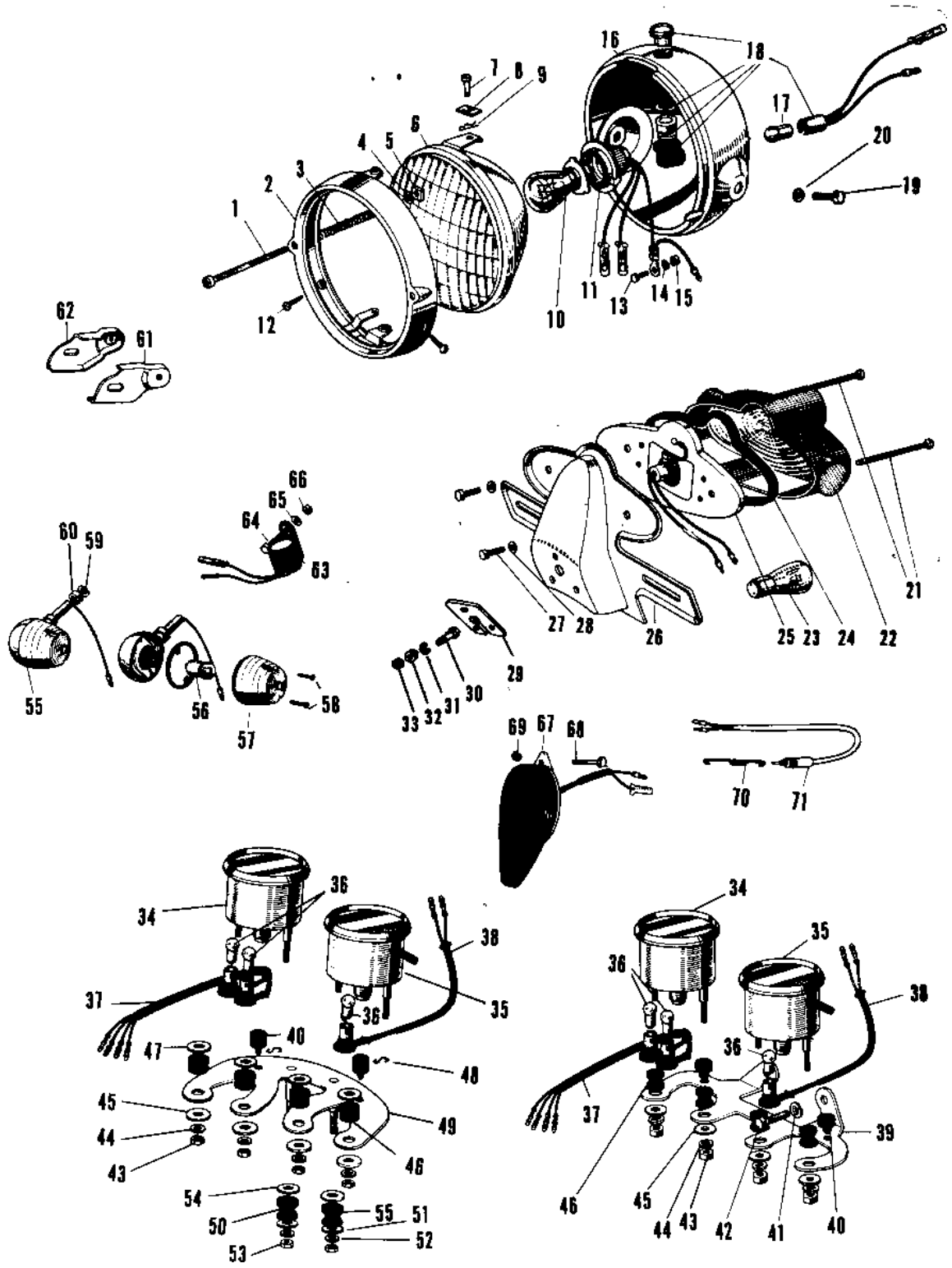


# 1968 Avenger SS PARTS DIAGRAM

## HEADLIGHT/TAILLIGHT/METERS 2



# 1968 Avenger SS PARTS LIST

## HEADLIGHT/TAILLIGHT/METERS 2

ITEM NAME	PART NUMBER	QUANTITY
LAMP UNIT HEAD (Ref # 1~15)	23004-020	1
SCREW FOCUS ADJUST (Ref # 1)	23019-017	1
SCREW FORCUS ADJUST (Ref # 1)	23019-021	1
RIM HEAD LAMP (Ref # 2)	23006-017	1
SPRING FOCUS ADJUST (Ref # 3)	23014-005	1
WASHER (Ref # 4)	23021-004	1
NUT (Ref # 5)	23020-010	1
NUT (Ref # 5)	23020-016	1
LENS UNIT HEAD LAMP (Ref # 6)	23007-013	1
SCREW LENS UNIT FITT (Ref # 7)	23019-018	2
NUT LENS UNIT FITTING (Ref # 8)	23020-009	2
PIN LENS UNIT FITTING (Ref # 9)	23022-001	2
BULB 12V 35/25W (Ref # 10)	92069-037	1
SOCKET HEAD LAMP (Ref # 11)	23008-011	1
SCREW OVL CNTSNK 5X10 (Ref # 12)	222E0510	2
SCREW OVL CNTSNK 5X10 (Ref # 12)	222E0510	2
SCREW PAN HEAD 3X6 (Ref # 13)	211B0306	1
SCREW-PAN-HEAD 3X6 (Ref # 13)	220B0306	1
WASHER SPRING 3MM (Ref # 14)	461F0300	1
NUT-HEX (Ref # 15)	311B0300	1
NUT-HEX (Ref # 15)	311B0300	1
BODY-HEAD LAMP,F BLK (Ref # 16)	23005-018-21	1
BODY HEAD LAMP (Ref # 16)	23005-023	1
BULB 12V 1.5W (Ref # 17)	92069-017	1
LAMP ASSY HIGH BEAM (Ref # 18)	23016-002	1
BOLT,HEX HEAD,10X25 (Ref # 19)	92007-045	2
WASHER SPRING 10MM (Ref # 20)	461F1000	2
LAMP ASSY TAIL (Ref # 21~28)	23025-027	NA
LAMP ASSY TAIL BLACK (Ref # 21~28)	23025-029-10	NA

# 1968 Avenger SS PARTS LIST

## HEADLIGHT/TAILLIGHT/METERS 2

ITEM NAME	PART NUMBER	QUANTITY
SCREW PAN HEAD 4X50 (Ref # 21)	220E0450	2
SCREW PAN HEAD 4X50 (Ref # 21)	220E0450	2
LENS TAIL LAMP (Ref # 22)	23026-010	1
BULB,12V 32/3CP (Ref # 23)	92069-059	1
GASKET TAIL LAMP (Ref # 24)	23028-008	1
SOCKET TAIL LAMP (Ref # 25)	23027-009	1
BKT LICENSE PLT (Ref # 26)	23036-002	1
BKT LICENSE PLT BLACK (Ref # 26)	23036-007-10	1
BOLT HEX HEAD 5X10 (Ref # 27)	110N0510	2
BOLT HEX HEAD 5X10 (Ref # 27)	110N0510A	2
WASHER SPRING 5MM (Ref # 28)	461F0500	2
DAMPER-TAIL LAMP SHCK (Ref # 29)	35039-005	1
BOLT-UPSET (Ref # 30)	112G0630	3
WASHER SPRING 6MM (Ref # 31)	461F0600	3
NUT 6MM (Ref # 32)	311B0600	3
NUT 6MM (Ref # 33)	312B0600	3
TACHOMETER ASSY (Ref # 34, 36)	25015-002	1
SPEEDOMETER ASSY MPH (Ref # 35,36,)	25005-027	1
BULB 12V 3W (Ref # 36)	92069-018	3
SOCKET TACHOMETER (Ref # 37)	25011-002	1
SOCKET SPEEDOMETER (Ref # 38)	25011-003	1
BRACKET SPEEDOMETER (Ref # 39)	25008-006	1
DAMPER RUBB SPEEDMETR (Ref # 40)	92075-035	2
WASHER SPRING 8MM (Ref # 41)	461F0800	2
BOLT HEX HEAD 8X16 (Ref # 42)	116B0816	2
NUT,5MM (Ref # 43)	311B0500	4
NUT,5MM (Ref # 43)	311B0500	4
WASHER SPRING 5MM (Ref # 44)	461F0500	4
WASHER PL 5.5X20X1.2 (Ref # 45)	92022-104	4

# 1968 Avenger SS PARTS LIST

## HEADLIGHT/TAILLIGHT/METERS 2

ITEM NAME	PART NUMBER	QUANTITY
DAMPER RUBB SPEEDMETR (Ref # 46)	92075-034	4
WASHER PLAIN 8MM (Ref # 47)	411B0800	4
CLAMP CABLE (Ref # 48)	25022-002	2
BRACKET SPEEDOMETER (Ref # 49)	25008-009	1
DAMPER RUBB SPEEDMETR (Ref # 50)	92075-024	2
WASHER 6.5X20X1.6T (Ref # 51)	92022-125	2
WASHER SPRING 6MM (Ref # 52)	461F0600	2
NUT 6MM (Ref # 53)	311B0600	2
WASHER PLAIN 8MM (Ref # 54)	411B0800	2
LAMP FRNT TURN SIGNAL (Ref # 55)	23040-020	4
BULB 12V 8W (Ref # 56)	92069-043	4
LENS TURN SIGNAL LAMP (Ref # 57)	23048-011	4
SCREW OVL CNTSNK 3X15 (Ref # 58)	222B0315A	8
WASHER SPRING 10MM (Ref # 59)	461F1000	4
NUT 10MM (Ref # 60)	315B1000	4
BRACKET RR TRN SIG L (Ref # 61)	23051-010	1
BRACKET RR TRN SIG R (Ref # 62)	23051-009	1
RELAY TURN SIGNAL (Ref # 63)	27002-008	1
BOLT-UPSET,6X16 (Ref # 64)	112G0616	1
WASHER PLAIN 6MM (Ref # 65)	411B0600	1
NUT 6MM (Ref # 66)	311B0600	1
HORN (Ref # 67)	27003-012	1
BOLT-SMALL-UPSET,8X18 (Ref # 68)	115G0818	2
WASHER SPRING 8MM (Ref # 69)	461F0800	2
SPRING BRAKE LAMP SW (Ref # 70)	27011-009	1
SWITCH BRAKE LAMP (Ref # 71)	27010-006	1