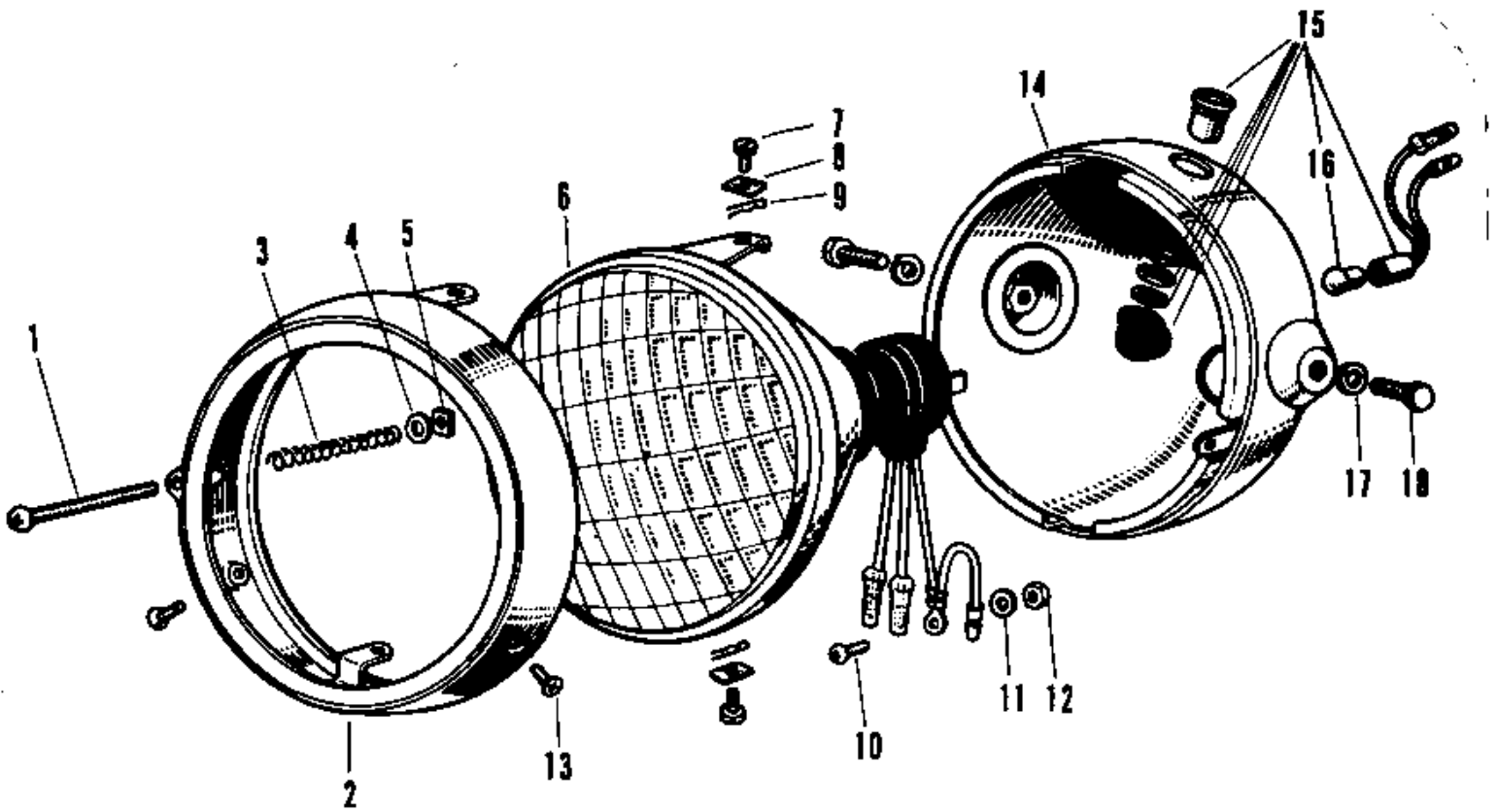


1967 A1SS PARTS DIAGRAM

HEADLIGHT A1A-A7SSA



1967 A1SS PARTS LIST

HEADLIGHT A1A-A7SSA

| ITEM NAME | PART NUMBER | QUANTITY |
|----------------------------------|--------------|----------|
| LAMP UNIT HEAD (Ref # 1~13) | 23003-011 | 1 |
| SCREW FORCUS ADJUST (Ref # 1) | 23019-021 | 1 |
| RIM HEAD LAMP (Ref # 2) | 23006-017 | 1 |
| SPRING FOCUS ADJUST (Ref # 3) | 23014-005 | 1 |
| WASHER (Ref # 4) | 23021-004 | 1 |
| NUT (Ref # 5) | 23020-016 | 1 |
| SEALED BEAM UNIT (Ref # 6) | 23007-025 | 1 |
| SCREW LENS UNIT FITT (Ref # 7) | 23019-018 | 2 |
| NUT LENS UNIT FITTING (Ref # 8) | 23020-009 | 2 |
| PIN LENS UNIT FITTING (Ref # 9) | 23022-001 | 2 |
| SCREW-PAN-HEAD 3X6 (Ref # 10) | 220B0306 | 1 |
| WASHER SPRING 3MM (Ref # 11) | 461F0300 | 1 |
| NUT-HEX (Ref # 12) | 311B0300 | 1 |
| SCREW OVL CNTSNK 5X10 (Ref # 13) | 222E0510 | 2 |
| BODY-HEAD LAMP,F BLK (Ref # 14) | 23005-018-21 | 1 |
| LAMP ASSY HIGH BEAM (Ref # 15) | 23016-002 | 1 |
| BULB 12V 1.5W (Ref # 16) | 92069-017 | 1 |
| WASHER SPRING 10MM (Ref # 17) | 461F1000 | 2 |
| BOLT,HEX HEAD,10X25 (Ref # 18) | 92007-045 | 2 |