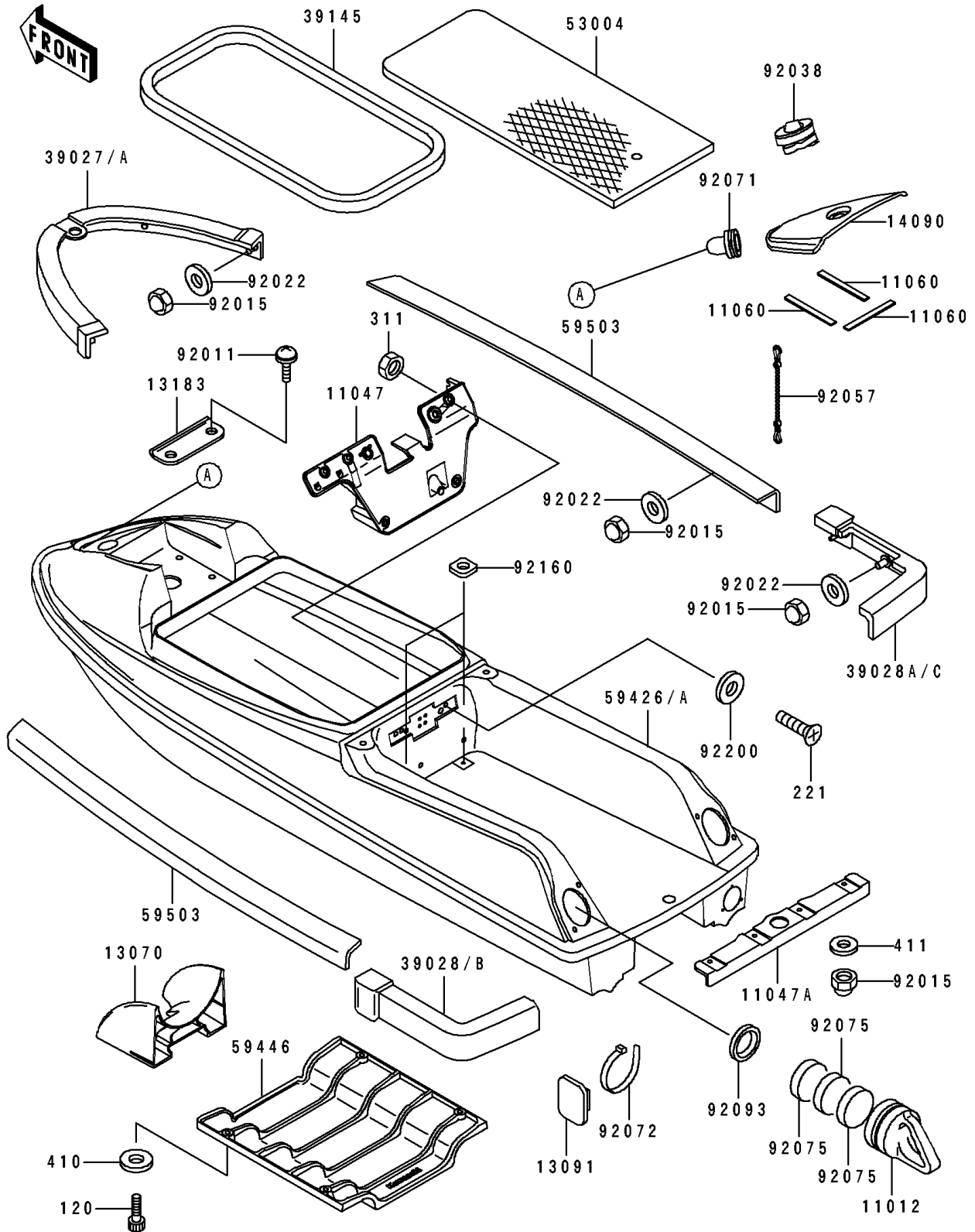


1993 750 SX PARTS DIAGRAM

Hull

F3141



1993 750 SX PARTS LIST

Hull

| ITEM NAME | PART NUMBER | QUANTITY |
|--------------------------------------|---------------|----------|
| CAP,VIOLET (Ref # 11012) | 11012-3752-RE | 2 |
| BRACKET,CONTROL KNOB (Ref # 11047) | 11047-3745 | 1 |
| BRACKET (Ref # 11047A) | 11047-3754 | 1 |
| GASKET (Ref # 11060) | 11060-3722 | 3 |
| GUIDE,INTAKE (Ref # 13070) | 13070-3708 | 1 |
| HOLDER,BAND (Ref # 13091) | 13091-3764 | 8 |
| PLATE (Ref # 13183) | 13183-3787 | 1 |
| COVER,TANK CAP,J.WHITE (Ref # 14090) | 14090-3707-8C | 1 |
| BUMPER-FRONT,VIOLET (Ref # 39027A) | 39027-3726-RE | 1 |
| BUMPER-REAR,LH,VIOLET (Ref # 39028B) | 39028-3726-RE | 1 |
| BUMPER-REAR,RH,VIOLET (Ref # 39028C) | 39028-3727-RE | 1 |
| TRIM-SEAL (Ref # 39145) | 39145-3731 | 1 |
| MAT (Ref # 53004) | 53004-3740 | 1 |
| HULL-COMP,J.WHITE (Ref # 59426A) | 59426-3800-8C | 1 |
| COVER-JET PUMP (Ref # 59446) | 59446-3715 | 1 |
| FENDER-BOAT,VIOLET (Ref # 59503) | 59503-3703-RE | 2 |
| SCREW,TAPPING (Ref # 92011) | 92011-561 | 2 |
| NUT,CAP,5MM (Ref # 92015) | 92015-3802 | 24 |
| WASHER (Ref # 92022) | 92022-567 | 20 |
| KEY,TANK CAP (Ref # 92038) | 92038-3707 | 1 |
| CHAIN,COVER,L=100 (Ref # 92057) | 92057-3704 | 1 |
| GROMMET (Ref # 92071) | 92071-3780 | 1 |
| BAND,L=145 (Ref # 92072) | 92072-3768 | 8 |
| DAMPER (Ref # 92075) | 92075-3719 | 6 |
| SEAL,OSR70X82X7.5 (Ref # 92093) | 92093-3704 | 2 |
| DAMPER (Ref # 92160) | 92160-3797 | 2 |
| WASHER (Ref # 92200) | 92200-3720 | 5 |
| BOLT-SOCKET,6X20 (Ref # 120) | 120R0620 | 4 |
| SCREW-CSK-CROS,6X20 (Ref # 221) | 221R0620 | 5 |

1993 750 SX PARTS LIST

Hull

| ITEM NAME | PART NUMBER | QUANTITY |
|------------------------------------|-------------|----------|
| NUT-HEX,6MM (Ref # 311) | 311R0600 | 5 |
| WASHER-PLAIN-SMALL,6MM (Ref # 410) | 410S0600 | 4 |
| WASHER-PLAIN,5MM (Ref # 411) | 411S0500 | 4 |