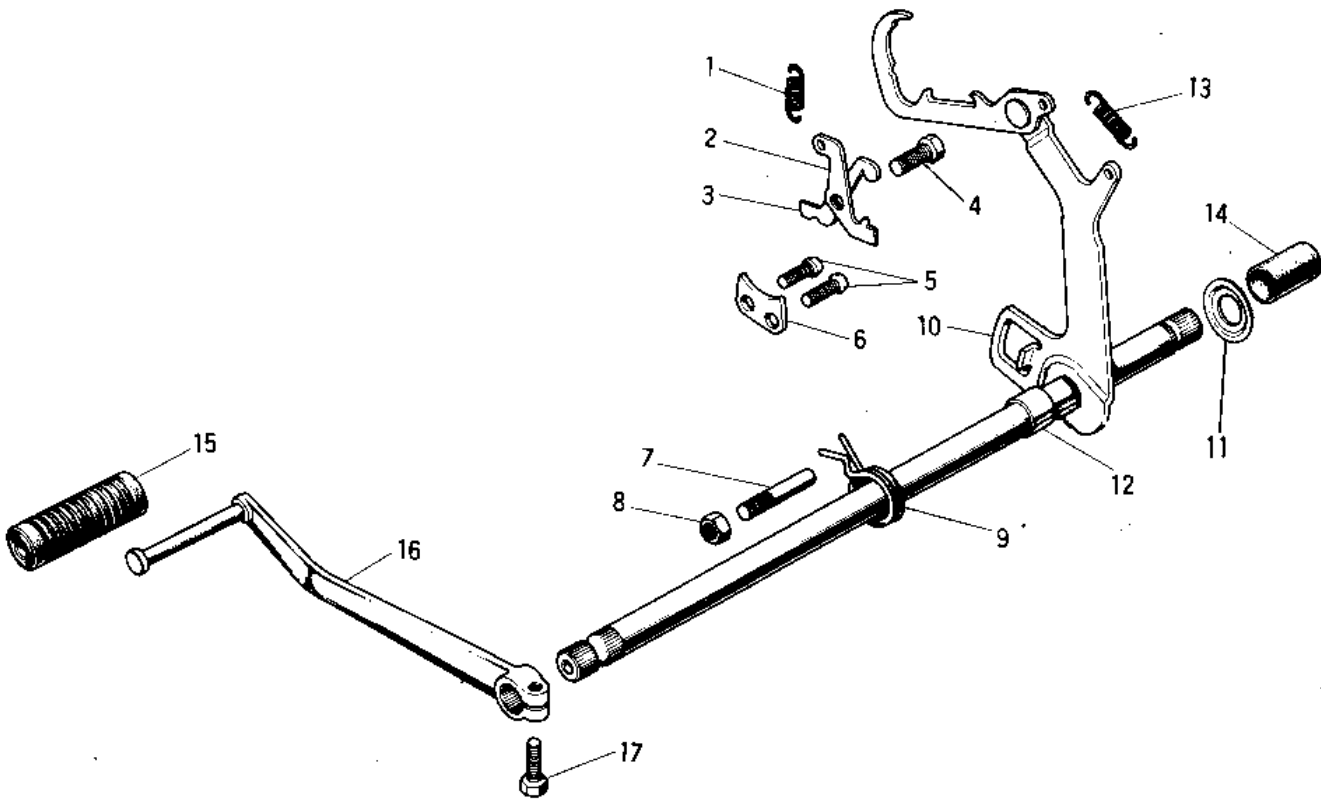


# 1970 Big Horn PARTS DIAGRAM

GEAR CHANGE MECHANISM



Ref. N

- 1
- 2
- 3
- 4
- 5
- 6
- 7
- 8
- 9
- 10
- 11
- 12
- 13
- 14
- 15
- 16
- 17

# 1970 Big Horn PARTS LIST

## GEAR CHANGE MECHANISM

| ITEM NAME                       | PART NUMBER | QUANTITY |
|---------------------------------|-------------|----------|
| SPRING-COIL (Ref # 1)           | 92081-091   | 1        |
| LEVER-CHANGE DRUM,B (Ref # 2)   | 13168-017   | 1        |
| LEVER-CHANGE DRUM,A (Ref # 3)   | 13168-016   | 1        |
| SCREW-PAN HEAD (Ref # 4)        | 92011-023   | 1        |
| SCREW PAN HEAD 6X14 (Ref # 5)   | 220B0614    | 2        |
| PLATE CHNG DRUM PSTN (Ref # 6)  | 13169-002   | 1        |
| PIN CHANGE PEDAL SPRG (Ref # 7) | 92043-057   | 1        |
| NUT 8MM (Ref # 8)               | 312B0800    | 1        |
| SPRING,TENTION (Ref # 9)        | 92081-1129  | 1        |
| LEVER ASSY GEAR CHNG (Ref # 10) | 13161-028   | 1        |
| SPACER (Ref # 11)               | 92026-068   | 1        |
| COLLAR (Ref # 12)               | 92027-121   | 1        |
| SPRING,CHANGE LEVER (Ref # 13)  | 92144-1720  | 1        |
| RUBBER CAP (Ref # 14)           | 13080-004   | 1        |
| RUBBER CHANGE PEDAL (Ref # 15)  | 13157-004   | 1        |
| PEDAL GEAR CHANGE (Ref # 16)    | 13156-045   | 1        |
| BOLT-UPSET (Ref # 17)           | 112G0618    | 1        |