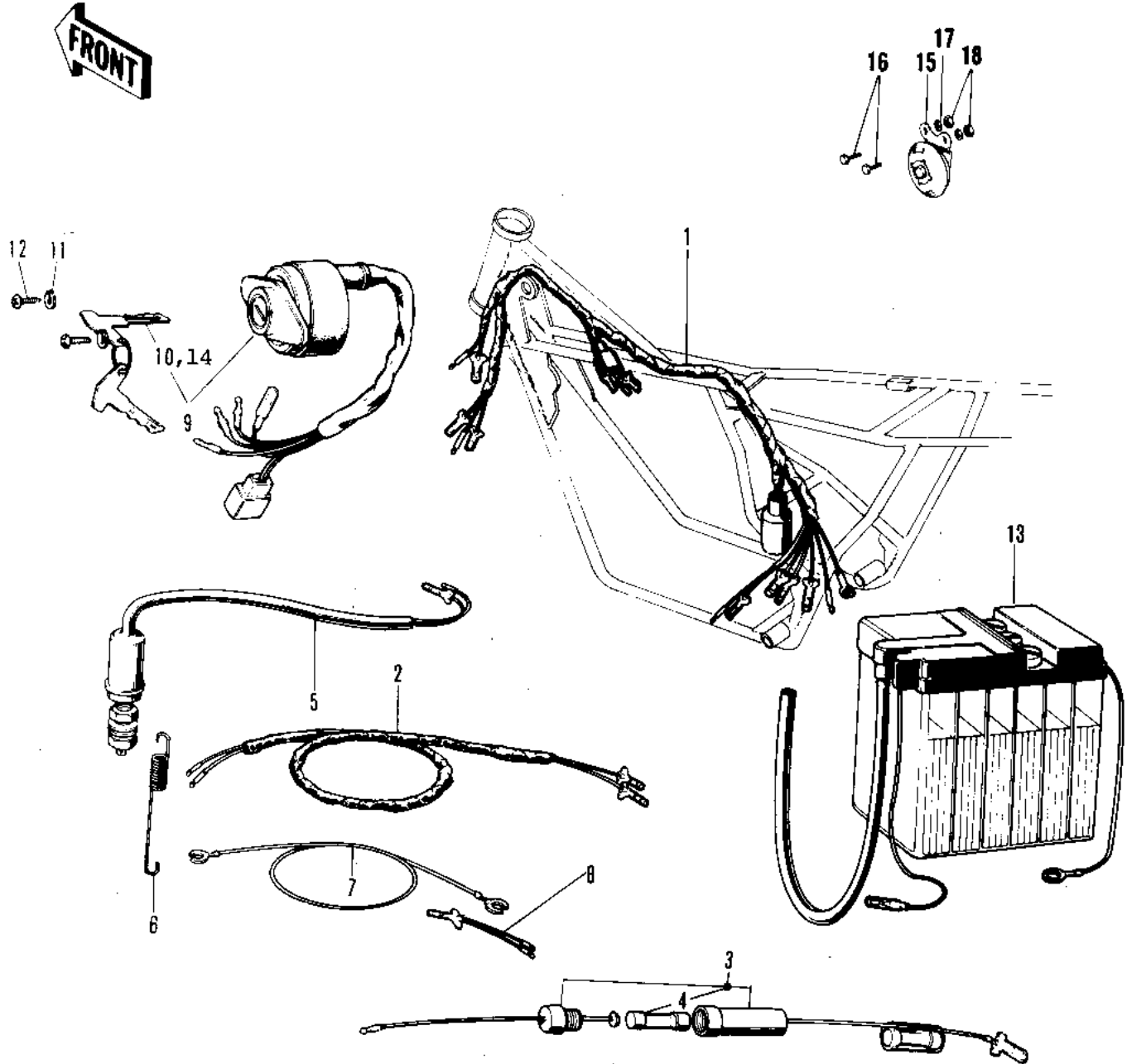


1971 F5-A PARTS DIAGRAM

CHASSIS ELECTRICAL EQUIPMENT

Re



1971 F5-A PARTS LIST

CHASSIS ELECTRICAL EQUIPMENT

| ITEM NAME | PART NUMBER | QUANTITY |
|--------------------------------|--------------|----------|
| WIRING HARNESS-MAIN (Ref # 1) | 26001-052 | 1 |
| WIRING HARNESS-MAIN (Ref # 1) | 26001-054 | 1 |
| WIRING HARNWSS REAR (Ref # 2) | 26002-027 | 1 |
| FUES ASSY (Ref # 3) | 26004-008 | 1 |
| FUSE 10A (Ref # 4) | 26006-003 | 2 |
| SWITCH-BRAKE LAMP (Ref # 5) | 27010-018 | 1 |
| SPRING BRAKE LAMP SW (Ref # 6) | 27011-004 | 1 |
| WIRE BATTERY GROUND (Ref # 7) | 26010-017 | 1 |
| LEAD WIRE (Ref # 8) | 26011-042 | 1 |
| SWITCH ASSY,IGNITION (Ref # 9) | 27005-1016 | 1 |
| KEY SET NO.321 (Ref # 10) | 27008-034-21 | 1 |
| KEY SET NO.322 (Ref # 10) | 27008-034-22 | 1 |
| KEY SET NO.323 (Ref # 10) | 27008-034-23 | 1 |
| KEY SET NO.324 (Ref # 10) | 27008-034-24 | 1 |
| KEY SET NO.235 (Ref # 10) | 27008-034-35 | 1 |
| KEY SET NO.236 (Ref # 10) | 27008-034-36 | 1 |
| KEY SET NO.237 (Ref # 10) | 27008-034-37 | 1 |
| KEY SET NO.238 (Ref # 10) | 27008-034-38 | 1 |
| KEY SET NO.239 (Ref # 10) | 27008-034-39 | 1 |
| KEY SET NO.140 (Ref # 10) | 27008-034-40 | 1 |
| KEY SET NO.141 (Ref # 10) | 27008-034-41 | 1 |
| KEY SET NO.142 (Ref # 10) | 27008-034-42 | 1 |
| KEY SET NO.143 (Ref # 10) | 27008-034-43 | 1 |
| WASHER SPRING 5MM (Ref # 11) | 461F0500 | 2 |
| SCREW PAN HEAD 5X12 (Ref # 12) | 220B0512 | 2 |
| YUA BAT 6N2-2A-3 (Ref # 13) | 26012-021 | 1 |
| KEY,BLANK (Ref # 14) | 27008-1016 | 1 |
| KEY,BLANK (Ref # 14) | 27008-1017 | 1 |
| KEY,BLANK (Ref # 14) | 27008-1018 | 1 |

1971 F5-A PARTS LIST

CHASSIS ELECTRICAL EQUIPMENT

| ITEM NAME | PART NUMBER | QUANTITY |
|------------------------------|-------------|----------|
| KEY,BLANK (Ref # 14) | 27008-1019 | 1 |
| HORN (Ref # 15) | 27003-062 | 1 |
| HORN (Ref # 15) | 27003-062 | 1 |
| BOLT-UPSET,6X20 (Ref # 16) | 112G0620 | 2 |
| WASHER SPRING 6MM (Ref # 17) | 461F0600 | 2 |
| NUT 6MM (Ref # 18) | 311B0600 | 2 |