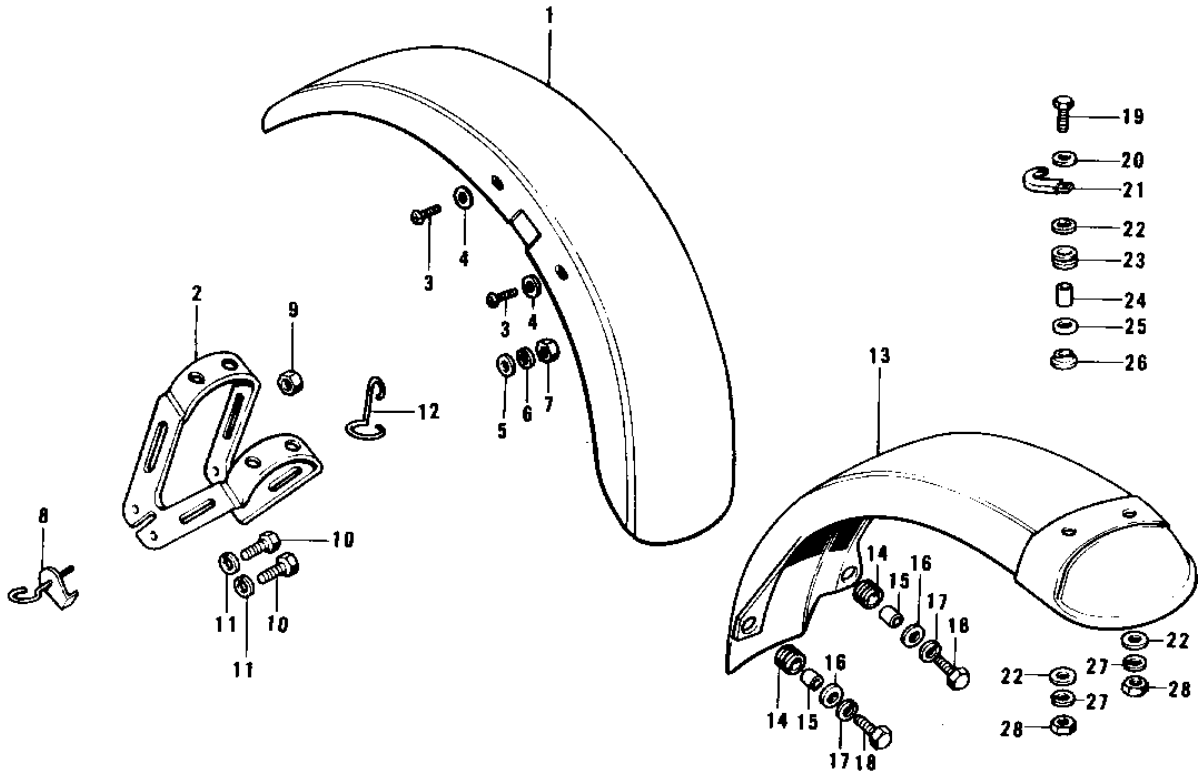


1974 Mach II PARTS DIAGRAM

FENDERS (73-74 S3/S3-A)



1974 Mach II PARTS LIST

FENDERS (73-74 S3/S3-A)

ITEM NAME	PART NUMBER	QUANTITY
FENDER-FR (Ref # 1)	35004-084	1
BRACE,FRONT FENDER (Ref # 2)	35009-028	1
SCREW PAN HEAD 6X14 (Ref # 3)	220E0614	4
WASHER-PLAIN,6MM (Ref # 4)	411D0600	4
WASHER PLAIN 6MM (Ref # 5)	411B0600	4
WASHER SPRING 6MM (Ref # 6)	461F0600	4
NUT 6MM (Ref # 7)	311B0600	4
CLAMP (Ref # 8)	92037-097	1
NUT-LOCK,5MM (Ref # 9)	92019-014	1
BOLT-SMALL-UPSET,8X16 (Ref # 10)	115G0816	4
WASHER SPRING 8MM (Ref # 11)	461F0800	4
CLAMP,CABLE (Ref # 12)	92037-138	1
FENDER-RR (Ref # 13)	35022-099	1
DAMPER RUBBER (Ref # 14)	92075-105	2
COLLAR (Ref # 15)	92027-103	2
WASHER 6.5X20X1.6T (Ref # 16)	92022-125	2
WASHER SPRING 6MM (Ref # 17)	461F0600	2
BOLT-UPSET,6X16 (Ref # 18)	112G0616	2
BOLT HEX HEAD 6X36 (Ref # 19)	110N0636	2
WASHER PLAIN 6MM (Ref # 20)	411B0600	1
CLAMP,HARNESS (Ref # 21)	92037-113	1
WASHER,PLAIN,7MM (Ref # 22)	92022-228	4
DAMPER RUBBER,RR FEND (Ref # 23)	92075-121	2
COLLAR,REAR FENDER (Ref # 24)	92027-162	2
WASHER,PLAIN,7MM (Ref # 25)	92022-227	2
DAMPER RUBBER,RR FEND (Ref # 26)	92075-133	2
WASHER SPRING 6MM (Ref # 27)	461F0600	2
NUT 6MM (Ref # 28)	311B0600	2