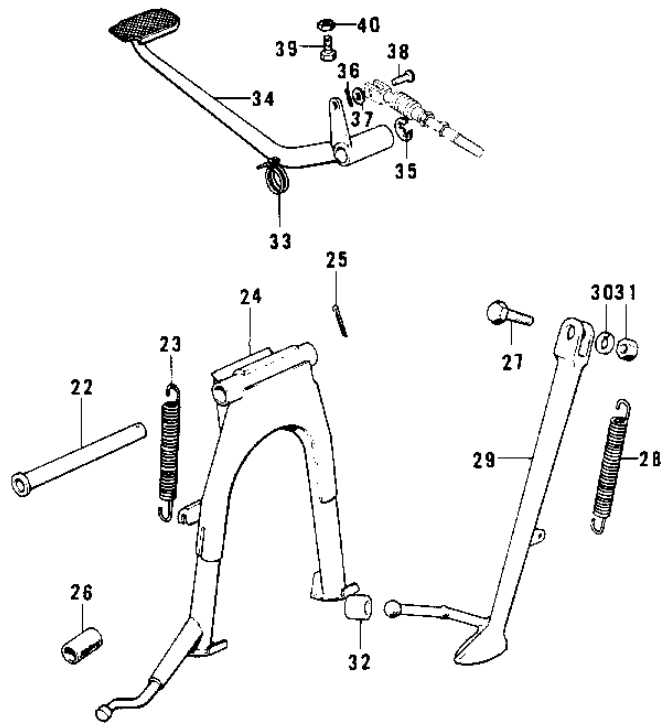
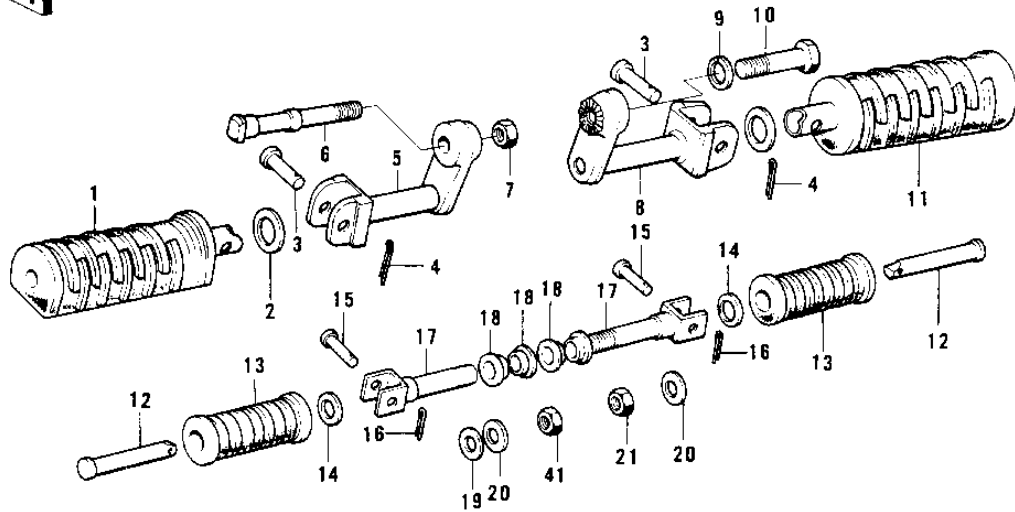


1974 Mach II PARTS DIAGRAM

FOOTRESTS/STANDS/BRAKE PEDAL



1974 Mach II PARTS LIST

FOOTRESTS/STANDS/BRAKE PEDAL

ITEM NAME	PART NUMBER	QUANTITY
BAR-FOOTREST,L.H (Ref # 1)	34028-011	1
WASHER PL 22.5X36X2.3 (Ref # 2)	92022-204	2
PIN-FOOTREST BAR FIT (Ref # 3)	92043-080	2
PIN,COTTER,2.5X15 (Ref # 4)	550D2515	2
HOLDER-FOTREST BAR LH (Ref # 5)	34003-040	1
BOLT-L.H FOOTREST FIT (Ref # 6)	92003-076	1
NUT-HEX-FINE,12MM (Ref # 7)	315B1200	1
HOLDER-FOTREST BAR RH (Ref # 8)	34003-041	1
WASHER SPRING 12MM (Ref # 9)	461F1200	1
BOLT,R.H.FOOTREST FIT (Ref # 10)	92001-1068	1
BAR-FOOTREST,R.H (Ref # 11)	34028-012	1
BAR-RR FOOTREST (OPT) (Ref # 12)	34028-009	2
RUBBER,REAR FOOTREST (Ref # 13)	92076-024	2
WASHER-PLAIN (OPT) (Ref # 14)	92022-199	2
PIN (Ref # 15)	92043-1464	2
PIN,COTTER,2.0X12 (Ref # 16)	550D2012	2
BRACKET,REAR FOOTREST (Ref # 17)	34029-011	2
BUSHING,MUFFLER FITT (Ref # 18)	92092-010	4
WASHER-HANDLEBAR FIT (Ref # 19)	92022-196	1
WASHER,PLAIN,10MM (Ref # 20)	411B1000	2
NUT,LOCK,10MM (Ref # 21)	92019-021	1
SHAFT MAIN STAND (Ref # 22)	34019-011	1
SPRING-MAIN STAND (Ref # 23)	34023-010	1
STAND-MAIN (Ref # 24)	34011-035	1
PIN COTTER 3.0X25 (Ref # 25)	550D3025	1
DAMPER RUBB-MAIN STND (Ref # 26)	92075-115	1
BOLT-SIDE STAND (Ref # 27)	92003-079	1
SPRING MAIN STAND (Ref # 28)	34023-005	1
STAND-SIDE (Ref # 29)	34024-051	1

1974 Mach II PARTS LIST

FOOTRESTS/STANDS/BRAKE PEDAL

ITEM NAME	PART NUMBER	QUANTITY
WASHER SPRING 10MM (Ref # 30)	461F1000	1
NUT,10MM (Ref # 31)	314B1000	1
DAMPER RUBB SIDE STND (Ref # 32)	92075-031	1
SPRING,BRAKE PEDAL (Ref # 33)	43005-033	1
PEDAL,BRAKE (Ref # 34)	43001-060	1
CIRCLIP 12MM (Ref # 35)	482K0200	1
PIN COTTER 2.0X15 (Ref # 36)	550D2015	1
WASHER PLAIN 6MM (Ref # 37)	410B0600	1
PIN R BRK CABLE JOINT (Ref # 38)	92043-034	1
BOLT 6X22 (Ref # 39)	112B0622	1
NUT 6MM (Ref # 40)	311B0600	1
NUT,10MM (Ref # 41)	92015-1429	1