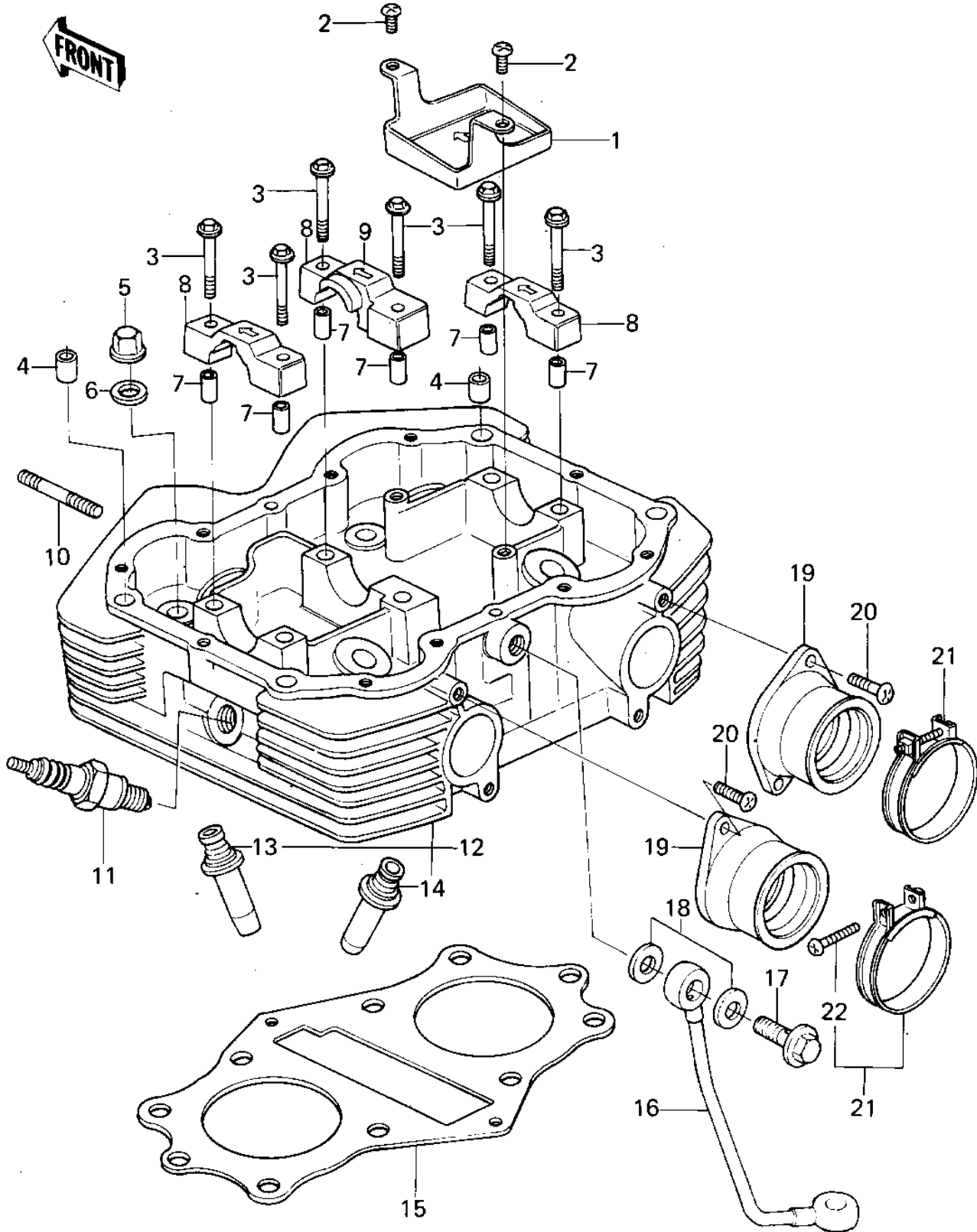


1978 KZ400-B1 PARTS DIAGRAM

CYLINDER HEAD



1978 KZ400-B1 PARTS LIST

CYLINDER HEAD

| ITEM NAME | PART NUMBER | QUANTITY |
|---------------------------------|-------------|----------|
| CAP,CYLINDER HEAD OIL (Ref # 1) | 11012-1027 | 1 |
| SCREW PAN HEAD 6X10 (Ref # 2) | 220B0610 | 2 |
| BOLT,HEX HEAD,6X38 (Ref # 3) | 92003-206 | 6 |
| PIN,DOWEL,10X8.2X14 (Ref # 4) | 92043-1037 | 2 |
| NUT,CYLINDER HEAD (Ref # 5) | 92015-076 | 8 |
| WASHER,10.5X22X1.6 (Ref # 6) | 92022-1005 | 8 |
| PIN-DOWEL (Ref # 7) | 92042-007 | 6 |
| CAP,BRG,HEAD,L.H&R.H (Ref # 8) | 14022-1002 | 2 |
| CAP,BRG.HEAD,CENTER (Ref # 9) | 14022-1003 | 1 |
| STUD,6X46 (Ref # 10) | 92004-049 | 4 |
| SPARK PLUG B7ES (Ref # 11) | B7ES | 2 |
| CYLINDER HEAD (Ref # 12) | 11002-1003 | 1 |
| GUIDE,EXHAUST VALVE (Ref # 13) | 49002-1010 | 2 |
| GUIDE,INLET VALVE (Ref # 14) | 12013-003 | 2 |
| GASKET,CYLINDER HEAD (Ref # 15) | 11004-1008 | 1 |
| PIPE,OIL (Ref # 16) | 32032-1084 | 1 |
| BOLT,BANJO,10X25 (Ref # 17) | 92001-1017 | 1 |
| GASKET,10X14.5X1.5 (Ref # 18) | 11009-1105 | 2 |
| HOLDER,CARBURETOR (Ref # 19) | 16065-1002 | 2 |
| SCREW PAN HEAD 6X18 (Ref # 20) | 220B0618 | 2 |
| CLAMP,CARBURETOR (Ref # 21) | 92037-1021 | 2 |
| SCREW PAN HEAD 5X30 (Ref # 22) | 220B0530 | 2 |
| SHAFT,ROCKER (Ref # 1) | 12020-1001 | 4 |
| GASKET,16X19.7X1.5 (Ref # 2) | 11009-1106 | 4 |
| NUT,ROCKER ARM FITTNG (Ref # 3) | 92016-061 | 4 |
| SCREW,ADJUSTING (Ref # 4) | 92009-1032 | 4 |
| ARM,ROCKER (Ref # 5) | 12016-1001 | 4 |
| SPLIT KEEPER (Ref # 6) | 12011-004 | 8 |
| RETAINER,VALVE SPRING (Ref # 7) | 12009-006 | 4 |

1978 KZ400-B1 PARTS LIST

CYLINDER HEAD

| ITEM NAME | PART NUMBER | QUANTITY |
|----------------------------------|-------------|----------|
| SPRING,OUTER VALVE (Ref # 8) | 12007-013 | 4 |
| SPRING,INNER VALVE (Ref # 9) | 12007-014 | 4 |
| OIL SEAL,RV37129.5 (Ref # 10) | 92049-016 | 4 |
| SEAT,VLV INNER SPRING (Ref # 11) | 12010-006 | 4 |
| SEAT,VLV OUTER SPRING (Ref # 12) | 12010-005 | 4 |
| VALVE,EXHAUST (Ref # 13) | 12005-1001 | 2 |
| VALVE,INTAKE (Ref # 14) | 12004-1001 | 2 |