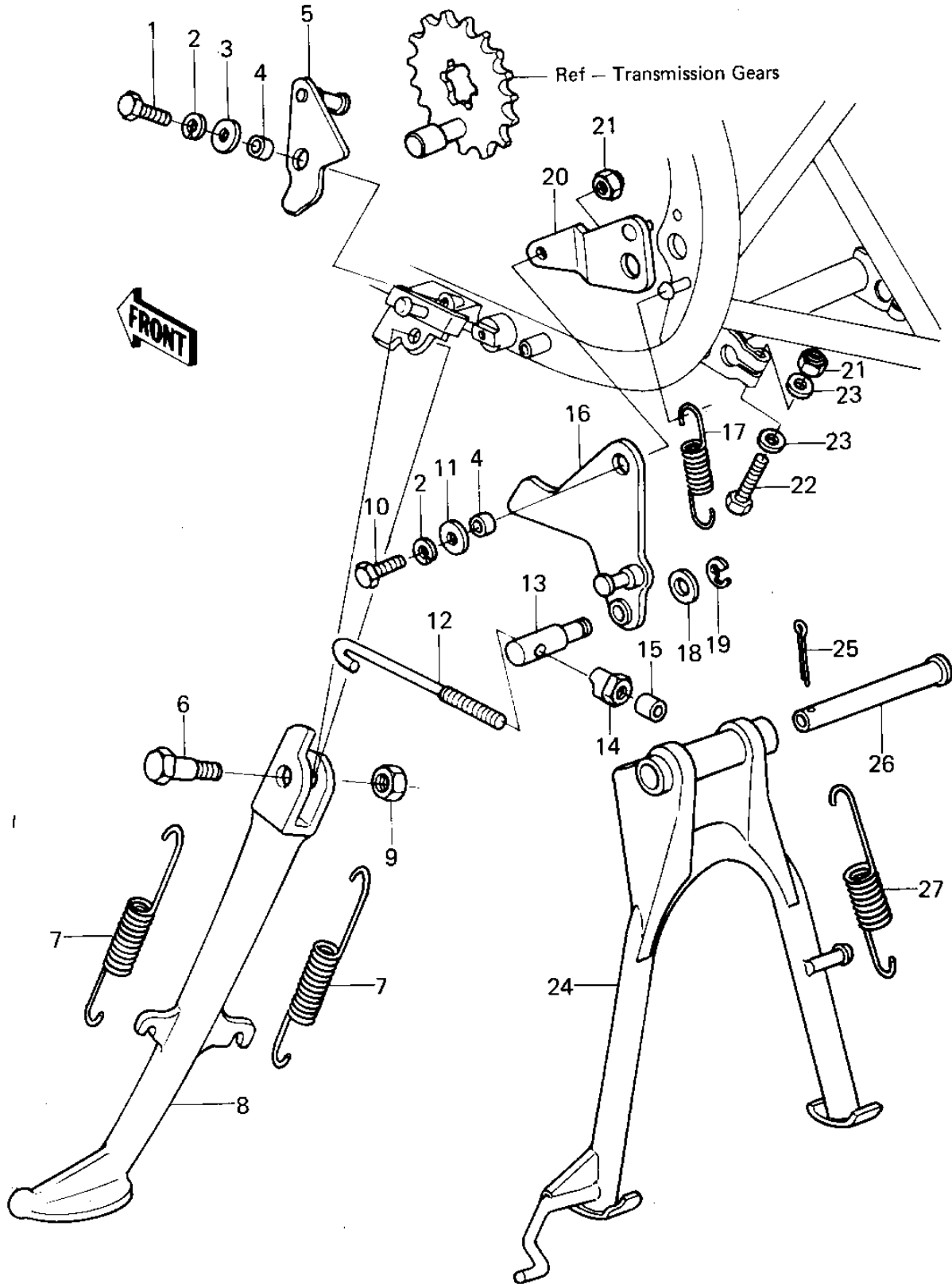


1978 KZ400-B1 PARTS DIAGRAM

STANDS



1978 KZ400-B1 PARTS LIST

STANDS

| ITEM NAME | PART NUMBER | QUANTITY |
|--------------------------------|-------------|----------|
| BOLT-UPSET,6X16 (Ref # 1) | 112G0616 | 1 |
| WASHER SPRING 6MM (Ref # 2) | 461F0600 | 2 |
| WASHER PLAIN 6MM (Ref # 3) | 411B0600 | 1 |
| COLLAR,6.3X10X4.8 (Ref # 4) | 92027-1066 | 2 |
| LATCH,SIDE STAND (Ref # 5) | 49031-1001 | 1 |
| BOLT, SIDE STAND FIT (Ref # 6) | 92003-157 | 1 |
| SPRING,SIDE STAND (Ref # 7) | 92081-1020 | 2 |
| STAND-SIDE (Ref # 8) | 34024-1008 | 1 |
| NUT 10MM (Ref # 9) | 315B1000 | 1 |
| NUT,20MM (Ref # 9) | 92015-1555 | 1 |
| BOLT-UPSET,6X20 (Ref # 10) | 112G0620 | 1 |
| WASHER 6.5X20X1.6T (Ref # 11) | 92022-125 | 1 |
| ROD,TIE,SIDE STAND (Ref # 12) | 39111-1002 | 1 |
| PIN,SIDE STAND (Ref # 13) | 92043-1018 | 1 |
| NUT,6M/M (Ref # 14) | 92015-1028 | 1 |
| TUBE,4.5X9X7 (Ref # 15) | 92059-1012 | 1 |
| LEVER,SIDE STAND (Ref # 16) | 13168-1005 | 1 |
| SPRING (Ref # 17) | 92081-1023 | 1 |
| WASHER PLAIN 8MM (Ref # 18) | 410B0800 | 1 |
| CIRCLIP,6M/M (Ref # 19) | 482K6000 | 1 |
| BRACKET,SIDE STAND (Ref # 20) | 11034-1151 | 1 |
| NUT (Ref # 21) | 92019-008 | 3 |
| BOLT 6X35 (Ref # 22) | 110R0635 | 2 |
| WASHER PLAIN 6MM (Ref # 23) | 410B0600 | 4 |
| STAND-MAIN (Ref # 24) | 34011-1002 | 1 |
| PIN COTTER 3.0X30 (Ref # 25) | 550D3030 | 1 |
| SHAFT,MAIN STAND (Ref # 26) | 34019-015 | 1 |
| SPRING,MAIN STAND (Ref # 27) | 92081-1032 | 1 |