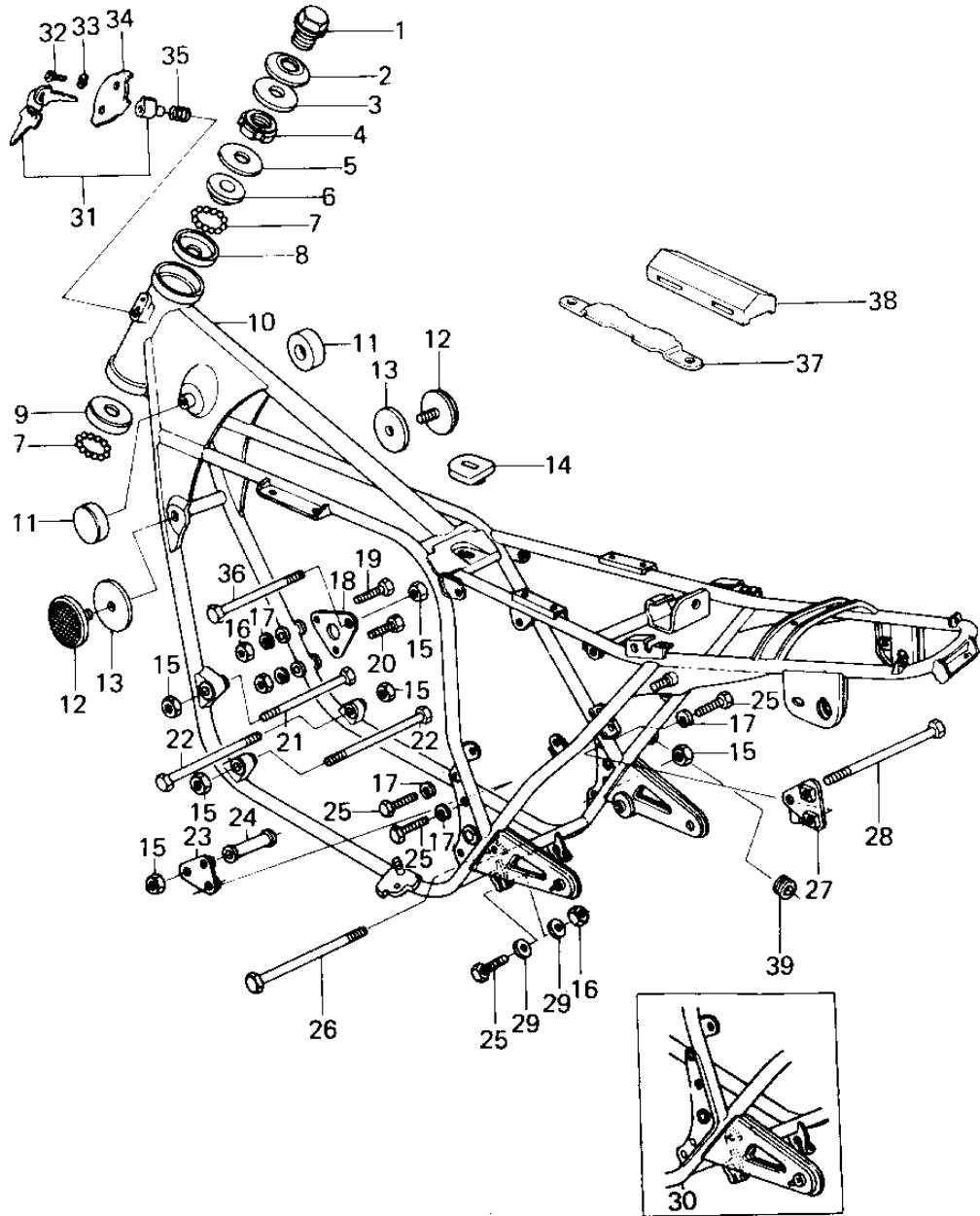


1979 Custom PARTS DIAGRAM

FRAME/FRAME FITTINGS



1979 Custom PARTS LIST

FRAME/FRAME FITTINGS

ITEM NAME	PART NUMBER	QUANTITY
BOLT,STEERG STEM HEA (Ref # 1)	92007-031	1
WASHER,STEERG STM HD (Ref # 2)	92022-230	1
WASHER,WAVE (Ref # 3)	46100-003	1
NUT STEERING STEM LC (Ref # 4)	92090-007	1
CAP, STEERING STEM (Ref # 5)	46098-016	1
CONE,STRNG STM BRNG (Ref # 6)	92047-011	1
BALL STEEL 1/4' (Ref # 7)	600A0800	39
RACE STRNG STEM BERN (Ref # 8)	92048-006	1
RACE,STRNG STM BRNG (Ref # 9)	92048-008	1
FRAME (Ref # 10)	32002-1008	1
DAMPER RUBBER-FL TAN (Ref # 11)	92075-101	2
REFLECTOR,REFLEX (Ref # 12)	28012-016	2
DAMPER RUBBER,REFLEC (Ref # 13)	92094-011	2
DAMPER RUBBER, FUEL TANK, REAR (Ref # 14)	92075 295	1
NUT,LOCK,10MM (Ref # 15)	92019-021	6
NUT,8MM (Ref # 16)	311B0800	4
WASHER SPRING 8MM (Ref # 17)	461F0800	6
PLATE,FRONT ENG.MOUNT (Ref # 18)	32030-063	1
BOLT-8X63 (Ref # 19)	92001-1397	1
BOLT,HEX HEAD,8X59 (Ref # 20)	110G0859	1
BOLT HEX HEAD 10X72 (Ref # 21)	92001 1049	1
BOLT HEX HEAD 10X84 (Ref # 22)	92001 1048	2
PLATE REAR ENGINE MOUNTING, RH (Ref # 23)	32030 064	1
COLLAR L 54MM (Ref # 24)	92027 275	1
BOLT (Ref # 25)	92001-1578	6
BOLT, HEX HEAD 10X219 (Ref # 26)	92091 032	1
PALTE REAR ENGINE MOUNTING, RH (Ref # 27)	32030 065	1
BOLT, HEX HEAD 10X250 (Ref # 28)	92090 023	1
WASHER PLAIN 8MM (Ref # 29)	410B0800	4

1979 Custom PARTS LIST

FRAME/FRAME FITTINGS

ITEM NAME	PART NUMBER	QUANTITY
FRAME (Ref # 30)	32002 1058	1
LOCK-ASSY,STEERING (Ref # 31)	27016-5009	1
LOCK-ASSY,STEERING (Ref # 31)	27016-5009	1
SCREW TAPPING (Ref # 32)	92006 007	1
WASHER (Ref # 33)	92097-003	1
CAP,STEERING LOCK (Ref # 34)	11012-1134	1
SPRING-STEERING LOCK (Ref # 35)	27032-001	1
BOLT, HEX HEAD 10X46 (Ref # 36)	92001 1050	1
BRACKET,IGNITION COI (Ref # 37)	11034-1125	2
DAMPER,IGNITION COIL (Ref # 38)	92075-1033	2
DAMPER RUBBER (Ref # 39)	43064-007	1