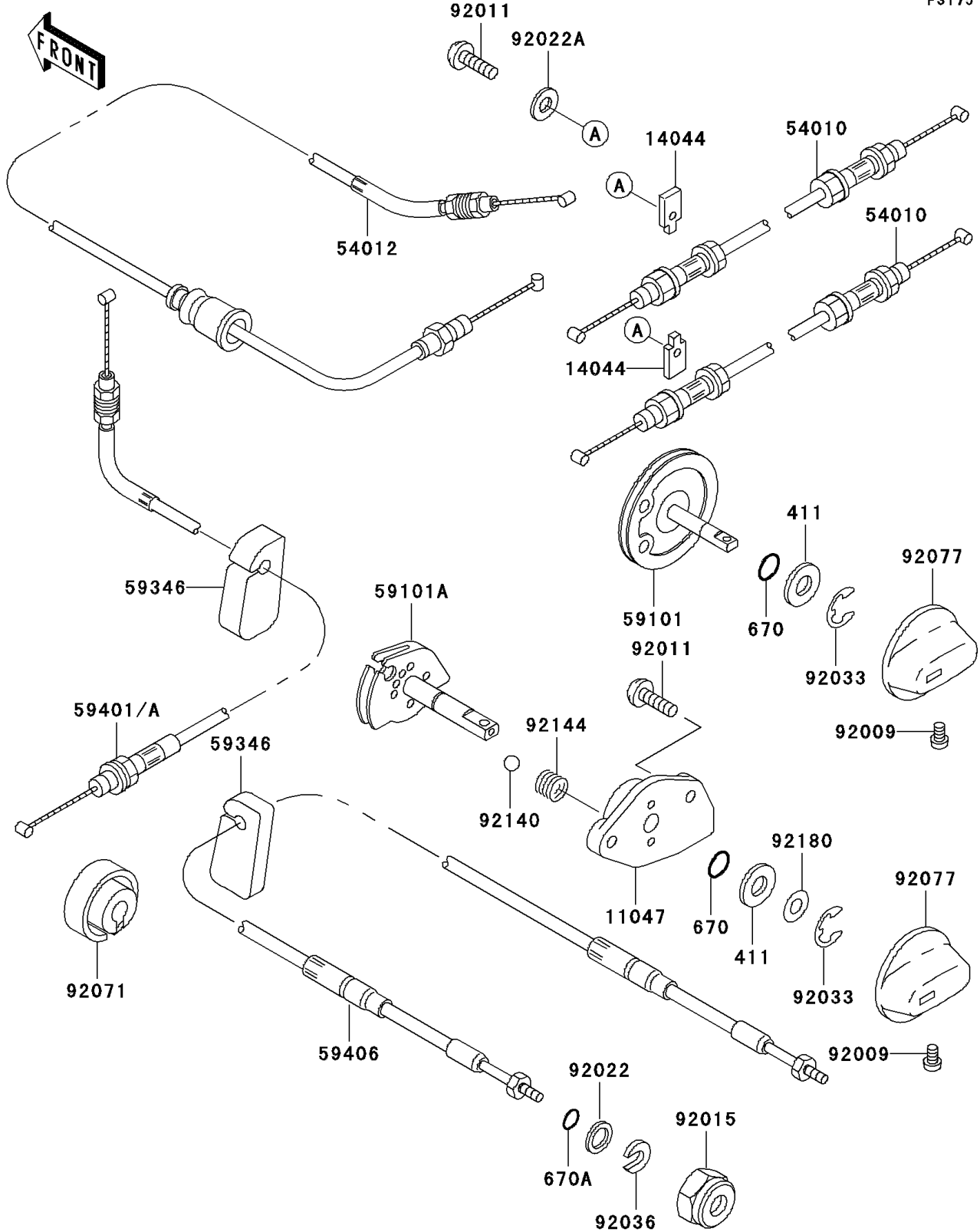


# 1999 SXI PRO PARTS DIAGRAM

Cables

F3175



# 1999 SXI PRO PARTS LIST

## Cables

ITEM NAME	PART NUMBER	QUANTITY
WASHER-PLAIN,8MM (Ref # 411)	411S0800	2
O RING,8MM (Ref # 670)	670B1508	2
O RING,11MM (Ref # 670A)	670B2011	1
BRACKET,CHOKE CABLE (Ref # 11047)	11047-3746	1
HOLDER-CABLE (Ref # 14044)	14044-3715	2
CABLE,SHIFT (Ref # 54010)	54010-3706	2
CABLE-THROTTLE (Ref # 54012)	54012-3753	1
REEL,SHIFT CABLE (Ref # 59101)	59101-3709	1
REEL,CHOKE CABLE (Ref # 59101A)	59101-3711	1
DETENT (Ref # 59346)	59346-504	2
CABLE-CHOKE (Ref # 59401A)	59401-3725	1
CABLE-STRG (Ref # 59406)	59406-3726	1
SCREW,4X8 (Ref # 92009)	92009-3729	2
SCREW (Ref # 92011)	92011-562	4
NUT,20MM (Ref # 92015)	92015-526	1
WASHER (Ref # 92022)	92022-535	1
WASHER (Ref # 92022A)	92022-563	2
RING-SNAP,7MM (Ref # 92033)	92033-3704	2
RING-SNAP (Ref # 92036)	92036-501	1
GROMMET (Ref # 92071)	92071-3774	1
KNOB,CABLE (Ref # 92077)	92077-3716	2
BALL,3MM (Ref # 92140)	92140-3702	2
SPRING (Ref # 92144)	92144-3712	2
SHIM,8.5X18X0.15 (Ref # 92180)	92180-3702	AR