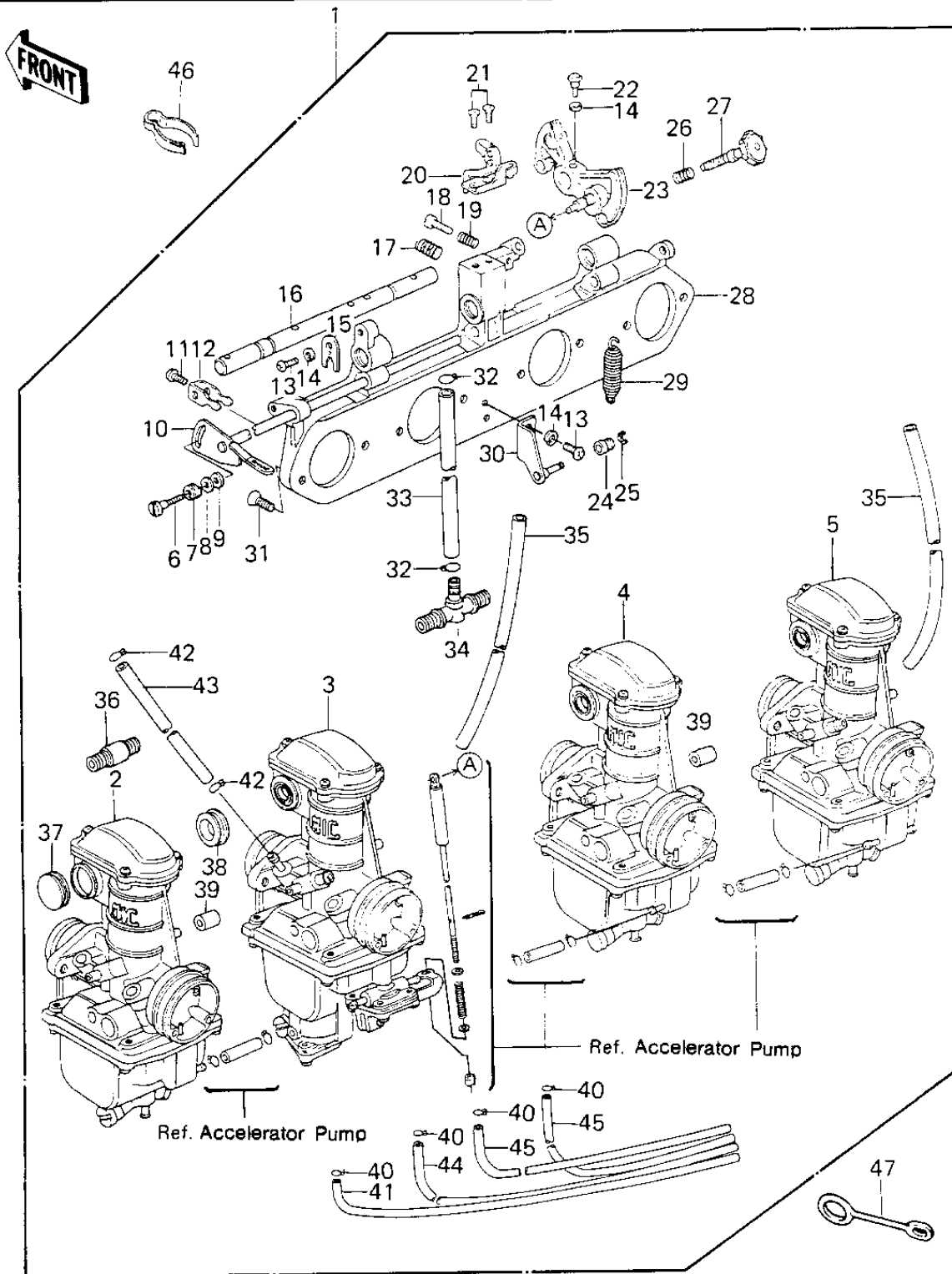


1980 LTD PARTS DIAGRAM

CARBURETOR ASSY



1980 LTD PARTS LIST

CARBURETOR ASSY

| ITEM NAME | PART NUMBER | QUANTITY |
|----------------------------------|-------------|----------|
| CARBURETOR ASSY (Ref # 1) | 16001-1208 | 1 |
| CARBURETOR,L.H,OUTSID (Ref # 2) | 16001-1220 | 1 |
| CARBURETOR,L.H,INSIDE (Ref # 3) | 16001-1221 | 1 |
| CARBURETOR,R.H,INSIDE (Ref # 4) | 16001-1222 | 1 |
| CARBURETOR,R.H,OUTSID (Ref # 5) | 16001-1223 | 1 |
| SCREW (Ref # 6) | 16046-005 | 1 |
| SPRING,F (Ref # 7) | 16040-009 | 1 |
| WASHER PLAIN 5MM (Ref # 8) | 410B0500 | 1 |
| WASHER,PLAIN (Ref # 9) | 16039-019 | 1 |
| SHAFT,STARTER PLUNGER (Ref # 10) | 16041-021 | 1 |
| SCREW,PAN HEAD,5X7 (Ref # 11) | 16046-007 | 4 |
| LEVER,STARTER PLUNGER (Ref # 12) | 13168-1026 | 4 |
| SCREW-PAN-CROS (Ref # 13) | 220B0514 | 3 |
| WASHER SPRING 5MM (Ref # 14) | 461F0500 | 4 |
| PLATE,SHAFT STOPPER (Ref # 15) | 16055-012 | 1 |
| SHAFT,CARB CONNECTION (Ref # 16) | 16041-017 | 1 |
| SPRING,CABLE PULLY (Ref # 17) | 16040-022 | 1 |
| SCREW (Ref # 18) | 16021-032 | 1 |
| SPRING,THROTTLE ADJST (Ref # 19) | 16022-010 | 1 |
| BRACKET,THROTTLE CABL (Ref # 20) | 16077-017 | 1 |
| SCREW CNTSNK HD 5X10 (Ref # 21) | 221B0510A | 2 |
| BOLT,HEX HEAD,5X14 (Ref # 22) | 16067-006 | 1 |
| PULLEY,THROTTLE CABLE (Ref # 23) | 13236-1014 | 1 |
| RING (Ref # 24) | 16073-016 | 1 |
| CIRCLIP 3MM (Ref # 25) | 482K3000 | 1 |
| SPRING,THROTTLE STOP (Ref # 26) | 16022-017 | 1 |
| SCREW,THROTTLE STOP (Ref # 27) | 16021-1010 | 1 |
| HOLDER,CARBURETOR (Ref # 28) | 16065-049 | 1 |
| SPRING,THROTTLE PULLY (Ref # 29) | 92081-1028 | 1 |

1980 LTD PARTS LIST

CARBURETOR ASSY

| ITEM NAME | PART NUMBER | QUANTITY |
|----------------------------------|-------------|----------|
| BRACKET,THROTTLE CABL (Ref # 30) | 16077-016 | 1 |
| SCREW,6X14 (Ref # 31) | 16033-029 | 8 |
| CLAMP,HOSE (Ref # 32) | 92037-1184 | 2 |
| TUBE,7.5X12.5X225 (Ref # 33) | 92059-1123 | 1 |
| FITTING (Ref # 34) | 92005-1010 | 1 |
| HOSE,AIR VENT,5X8X250 (Ref # 35) | 92059-1045 | 2 |
| FITTING (Ref # 36) | 92005-1009 | 2 |
| CAP,RUBBER (Ref # 37) | 16039-042 | 2 |
| GROMMET,CARBURETOR (Ref # 38) | 92071-104 | 6 |
| HOSE,6X11.5X16 (Ref # 39) | 92059-141 | 2 |
| CLAMP,OVERFLOW HOSE (Ref # 40) | 92037-173 | 4 |
| HOSE,FUEL OVERFLOW (Ref # 41) | 92059-147 | 1 |
| CLAMP-PIPE (Ref # 42) | 92037-072 | 2 |
| TUBE,5.3X10.5X140 (Ref # 43) | 92059-1019 | 1 |
| HOSE,FUEL OVERFLOW (Ref # 44) | 92059-134 | 1 |
| HOSE,FUEL OVERFLOW (Ref # 45) | 92059-134 | 2 |
| CLAMP,AIR VENT HOSE (Ref # 46) | 92037-1092 | 1 |
| CLAMP,OVER FLOW PIPE (Ref # 47) | 92037-134 | 1 |