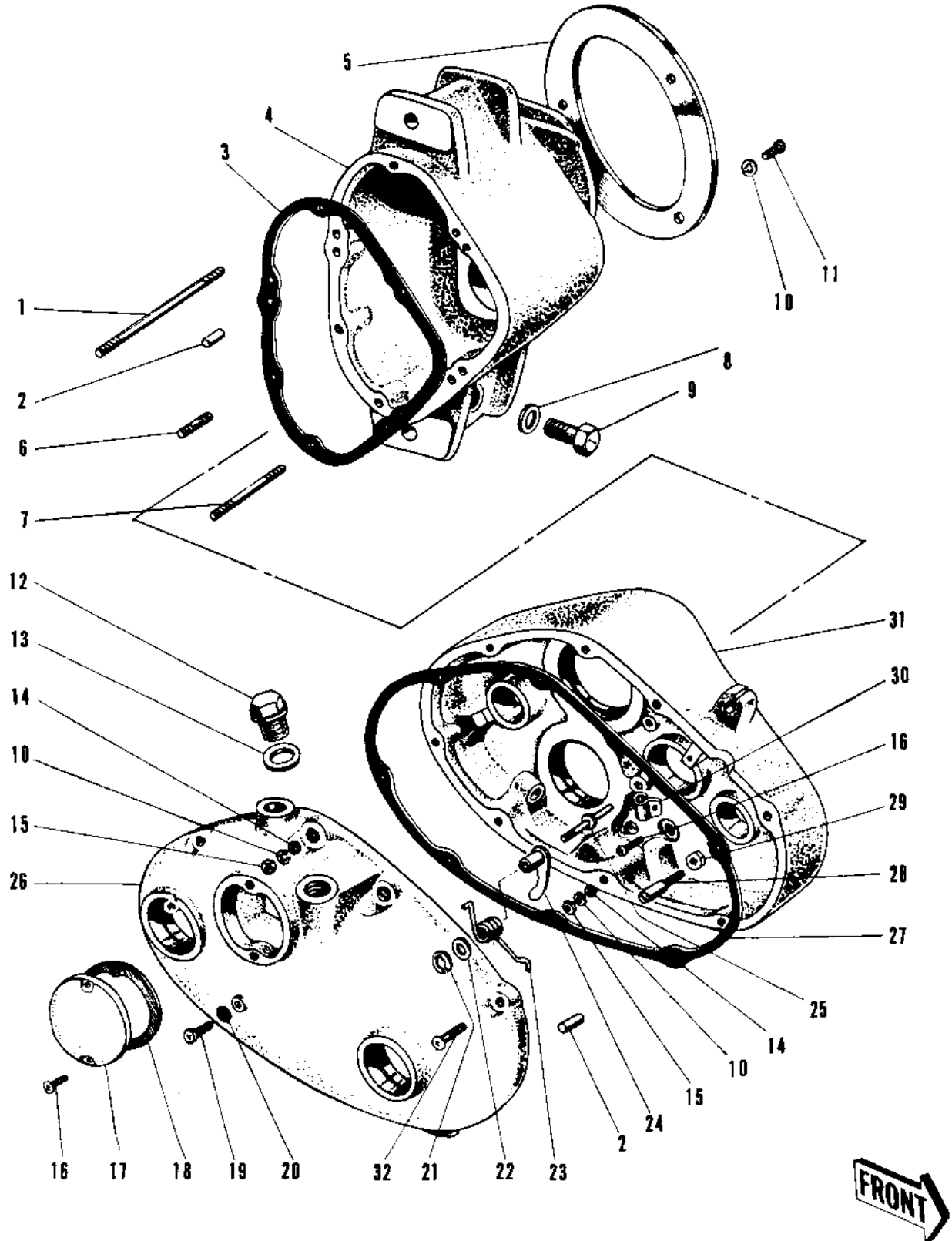


# 1966 W1 PARTS DIAGRAM

## TRANSMISSION CASE/GEAR CASE



# 1966 W1 PARTS LIST

## TRANSMISSION CASE/GEAR CASE

ITEM NAME	PART NUMBER	QUANTITY
STUD 6X78 (Ref # 1)	92004-015	1
PIN DOWEL 8X14 (Ref # 2)	552A0814	4
GASKET GEAR BOX (Ref # 3)	14058-001	1
GEAR BOX (Ref # 4)	14054-001	1
PLATE DUST SHIELD (Ref # 5)	14061-001	1
STUD (Ref # 6)	172G0618	5
STUD 6X50 (Ref # 7)	172G0650	1
GASKET DRAIN PLUG (Ref # 8)	92065-036	1
BOLT,HEX HEAD,10X14 (Ref # 9)	113G1014	1
WASHER SPRING 6MM (Ref # 10)	461F0600	10
BOLT,6X10 (Ref # 11)	112G0610	3
PLUG OIL FILLER (Ref # 12)	92066-009	1
GASKET OIL FILER PLUG (Ref # 13)	92065-034	1
WASHER PLAIN 6MM (Ref # 14)	410B0600	7
NUT 6MM (Ref # 15)	311B0600	7
SCREW PAN HEAD 6X12 (Ref # 16)	220B0612	2
UNAVAILABLE IN PRICE BOOK (Ref # 17)	14040-002	
CAP HOLE (Ref # 17)	14028-004	1
GASKET HOLE CAP (Ref # 18)	14049-003	1
SCREW PAN HEAD 6X8 (Ref # 19)	220B0608	2
GASKET OIL LEVEL SCRW (Ref # 20)	92065-035	1
CIRCLIP 6MM (Ref # 21)	482J6000	1
WASHER CHNG DRUM LEV (Ref # 22)	92022-091	1
SPRING CHNG DRUM LEV (Ref # 23)	92083-008	1
LEVER GEAR CHNG DRUM (Ref # 24)	13168-009	1
PIN CHANGE DRUM LEVER (Ref # 25)	92043-018	1
COVER MISSION CASE (Ref # 26)	14056-001	1
GASKET MISSION CASE (Ref # 27)	14058-002	1
PIN CHANG PEDAL SPRNG (Ref # 28)	92043-014	1

# 1966 W1 PARTS LIST

## TRANSMISSION CASE/GEAR CASE

ITEM NAME	PART NUMBER	QUANTITY
NUT 6MM (Ref # 29)	312B0600	1
CLAMP NEUTRAL SW CORD (Ref # 30)	14062-001	1
CASE TRANSMISSION (Ref # 31)	14055-001	1
SCREW PAN HEAD 6X20 (Ref # 32)	220B0620	7