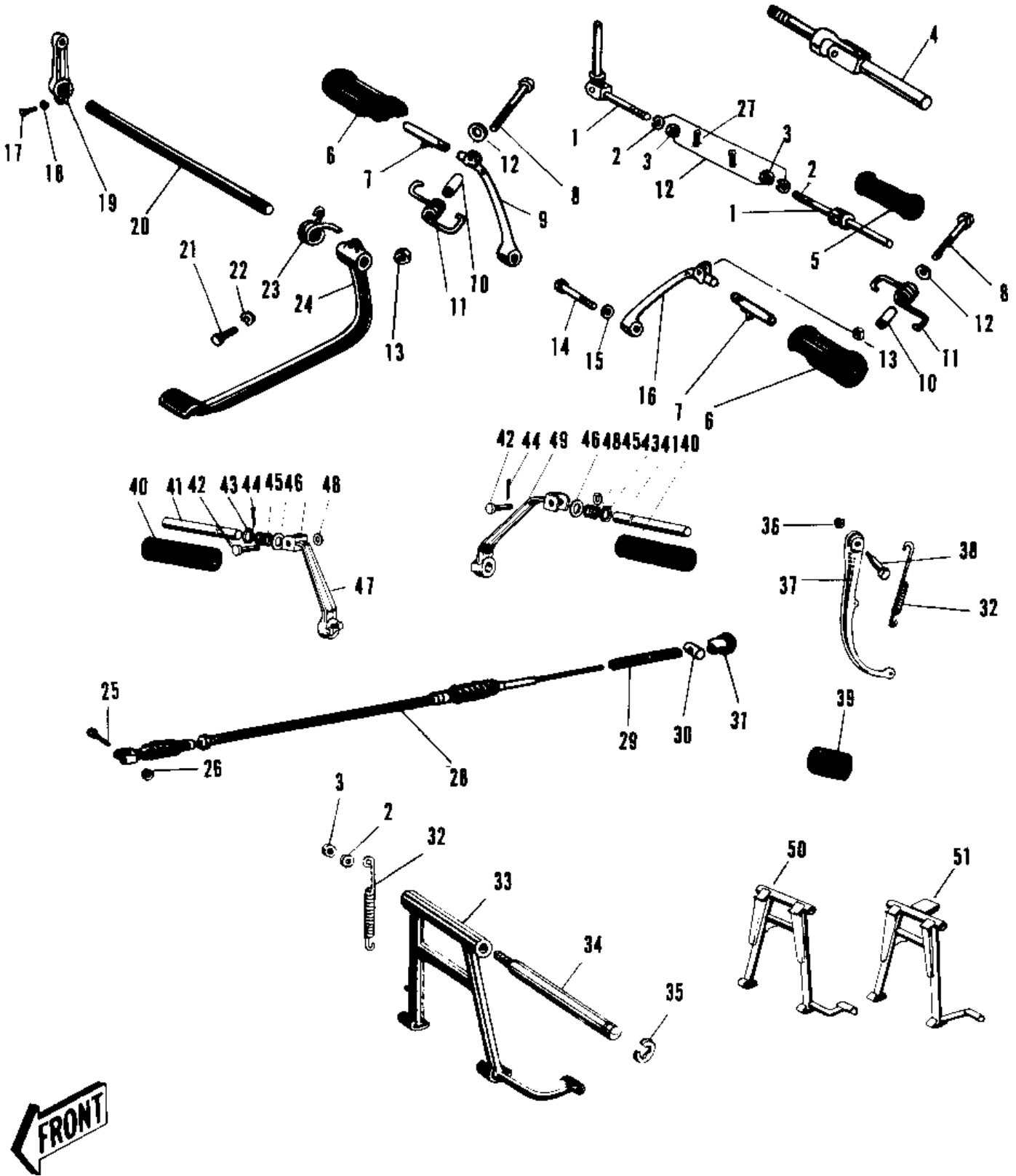


1969 Commander PARTS DIAGRAM

FOOTRESTS/STANDS/BRAKE PEDAL



1969 Commander PARTS LIST

FOOTRESTS/STANDS/BRAKE PEDAL

ITEM NAME	PART NUMBER	QUANTITY
BAR R.H REAR FOOTREST (Ref # 1)	34027-007	2
WASHER SPRING 10MM (Ref # 2)	461F1000	3
NUT,10MM (Ref # 3)	314B1000	3
RUBBER REAR FOOTREST (Ref # 5)	92076-009	2
RUBBER FOOTREST (Ref # 6)	92076-005	2
PEG FOOTREST FOLDING (Ref # 7)	34005-001	2
BOLT,10X45 (Ref # 8)	92001-1182	2
BAR FOOTREST R.H (Ref # 9)	34003-007	(1
COLLAR FOOTREST FOLD (Ref # 10)	92027-016	2
SPRING-FOOTREST FOLD (Ref # 11)	34006-001	2
WASHER,8X26X2.3 (Ref # 12)	92022-1564	2
NUT,8MM (Ref # 13)	311B0800	2
BOLT HEX HEAD 14X55 (Ref # 14)	113B1455	2
WASHER SPRING 14MM (Ref # 15)	461F1400	2
BAR FOOTREST L.H (Ref # 16)	34003-008	(1
BOLT-UPSET,6X40 (Ref # 17)	112G0640	1
WASHER SPRING 6MM (Ref # 18)	461F0600	1
LEVER REAR BRAKE (Ref # 19)	43003-003	1
SHAFT BRAKE PEDAL (Ref # 20)	43004-004	1
BOLT BRAKE PEDAL (Ref # 21)	92001-044	1
WASHER SPRING 8MM (Ref # 22)	461F0800	1
SPRING BRAKE PEDAL (Ref # 23)	43005-010	1
PEDAL BRAKE (Ref # 24)	43001-023	1
PIN R BRK CABLE JOINT (Ref # 25)	92043-034	1
WASHER PLAIN 6MM (Ref # 26)	410B0600	1
PIN COTTER 2.0X15 (Ref # 27)	550D2015	3
CABLE REAR BRAKE (Ref # 28)	54022-004	1
SPRING BRAKE ROD (Ref # 29)	54025-001	1
PIN BRAKE ROD (Ref # 30)	92043-053	1

1969 Commander PARTS LIST

FOOTRESTS/STANDS/BRAKE PEDAL

ITEM NAME	PART NUMBER	QUANTITY
NUT BRAKE ROD ADJUST (Ref # 31)	92015-017	1
SPRING STAND (Ref # 32)	34023-008	2
STAND MAIN (Ref # 33)	34011-026	1
SHAFT MAIN STAND (Ref # 34)	34019-010	1
CIRCLIP 15MM (Ref # 35)	482K0300	1
NUT 10MM (Ref # 36)	315B1000	1
STAND-SIDE (Ref # 37)	34024-018	1
BOLT SIDE STAND (Ref # 38)	92003-024	1
DAMPER RUBB SIDE STND (Ref # 39)	92075-031	1
RUBBER FOOTREST (Ref # 40)	92076-010	2
PEG FOOTREST FOLDING (Ref # 41)	34005-004	2
PIN STER FIXING (Ref # 42)	92043-037	2
CIRCLIP 16MM (Ref # 43)	480J1600	2
PIN COTTER 2.0X15 (Ref # 44)	550D2015	2
SPRING FOOTREST PEG (Ref # 45)	34006-002	2
WASHER FOLDING PEG (Ref # 46)	92022-049	2
BAR FOOTREST R.H (Ref # 47)	34003-016	1
WASHER PLAIN 8MM (Ref # 48)	410B0800	2
BAR FOOTREST L.H (Ref # 49)	34003-017	1