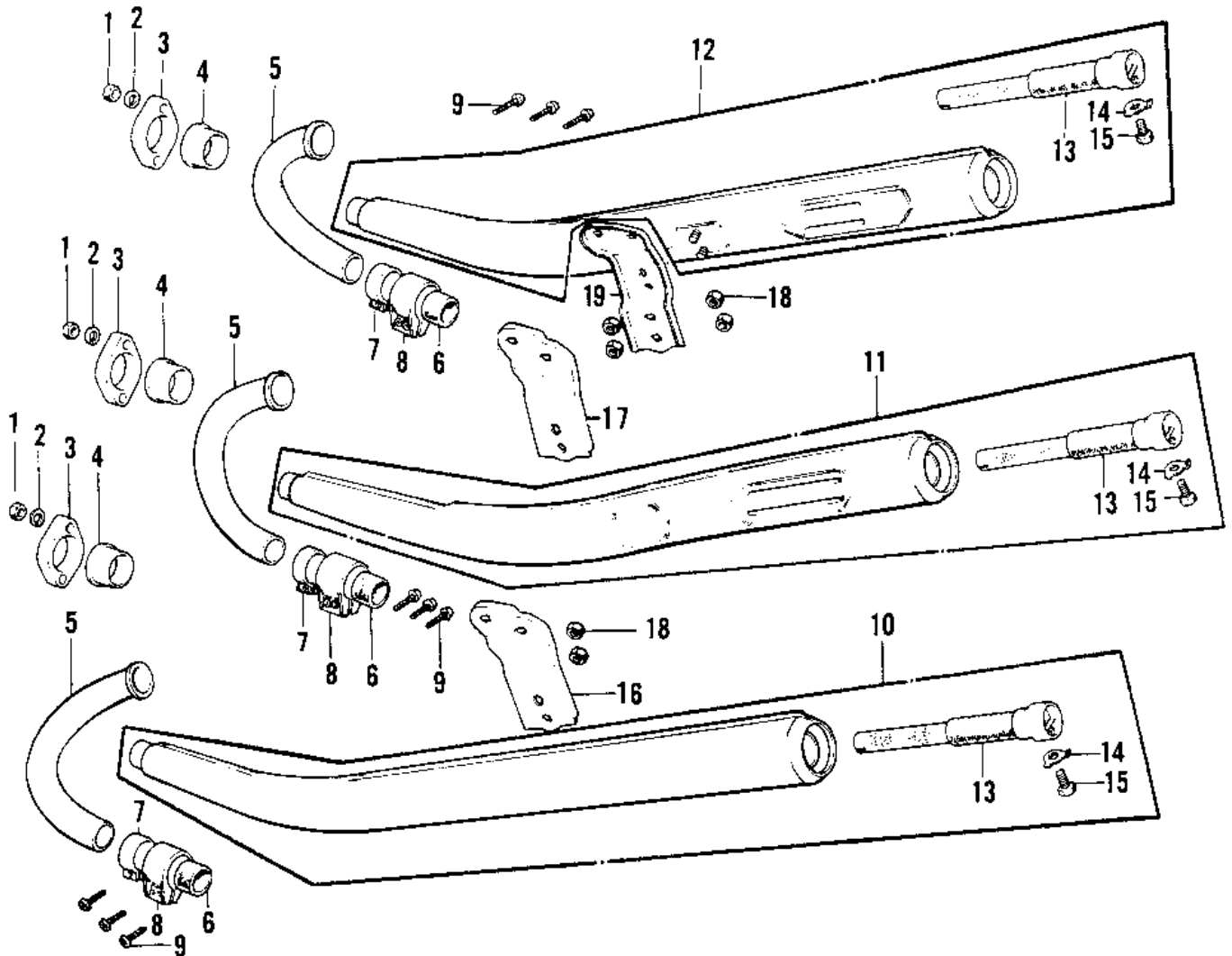


1974 Mach IV PARTS DIAGRAM

MUFFLERS (H2-B/C)



1974 Mach IV PARTS LIST

MUFFLERS (H2-B/C)

| ITEM NAME | PART NUMBER | QUANTITY |
|---------------------------------|-------------|----------|
| NUT,8MM (Ref # 1) | 311B0800 | |
| WASHER SPRING 8MM (Ref # 2) | 461F0800 | |
| HOLDER,EXHAUST (Ref # 3) | 18069-049 | |
| INSERT,EXH PIPE HLDR (Ref # 4) | 18070-011 | |
| PIPE,EXHAUST (Ref # 5) | 18049-102 | |
| CONNECTOR MUFFLER (Ref # 6) | 18043-010 | |
| HOLDER MUFFLER CONECT (Ref # 7) | 18044-007 | |
| HOLDER MUFFLER CONECT (Ref # 8) | 18044-006 | |
| SCREW PAN HEAD 6X30 (Ref # 9) | 220B0630 | |
| MUFFLER ASSY,L.H (Ref # 10) | 18001-143 | |
| MUFFLER ASSY,CENTER (Ref # 11) | 18001-144 | |
| MUFFLER ASSY,R.H (Ref # 12) | 18001-145 | |
| BAFFLE TUBE (Ref # 13) | 18033-056 | |
| WASHER LOCK 6MM (Ref # 14) | 92024-016 | |
| BOLT-UPSET,6X12 (Ref # 15) | 112G0612 | |
| BRACKET,L.H MUFFLER (Ref # 16) | 18061-051 | |
| BRACKET,CNT MUFFLER (Ref # 17) | 18061-052 | |
| NUT,8MM (Ref # 18) | 311B0800 | |
| BRACKET,R.H MUFFLER (Ref # 19) | 18061-053 | |