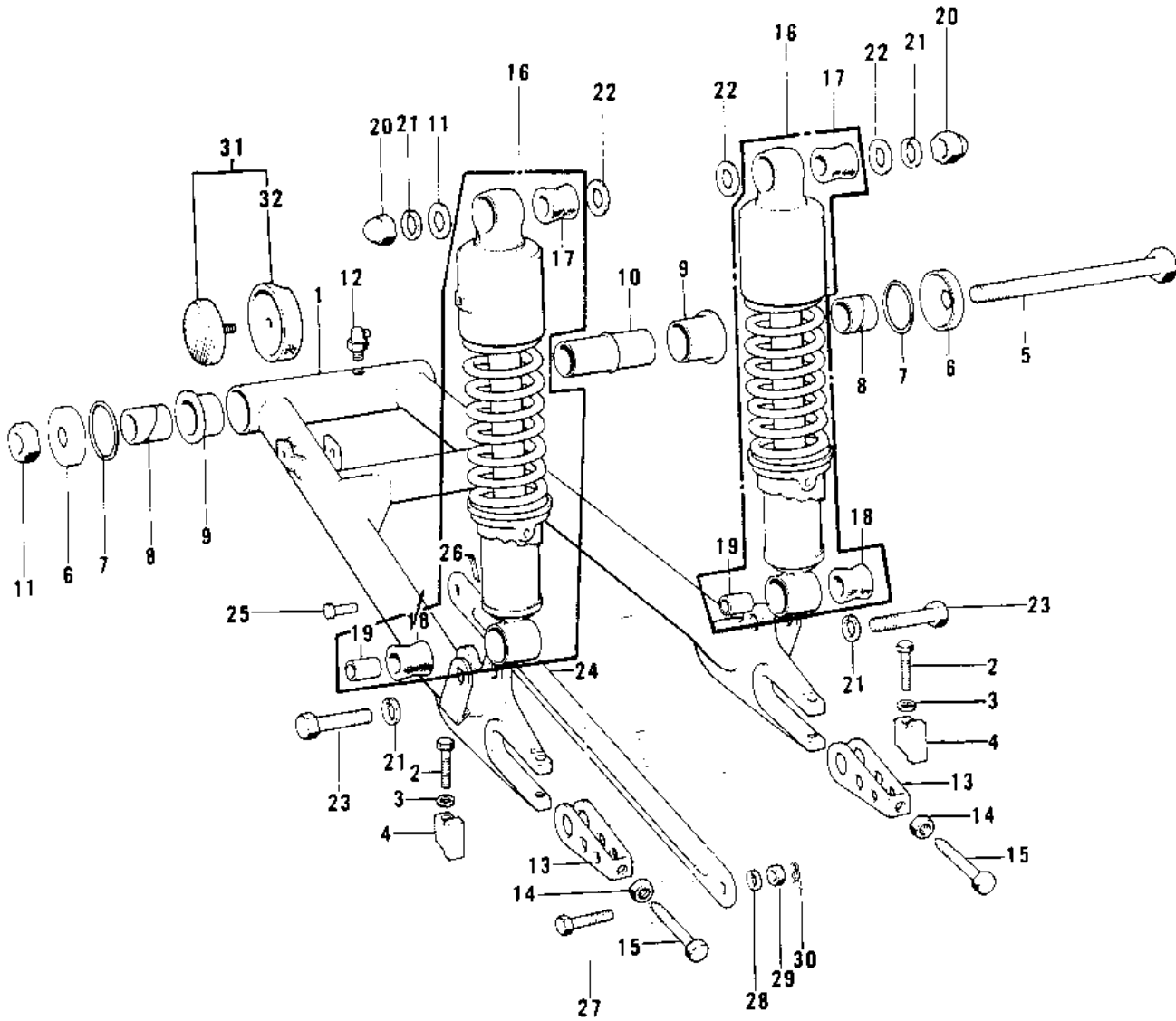


1972 Mach IV PARTS DIAGRAM

SWING ARM/SHOCK ABSORBERS (H2-B/C)



1972 Mach IV PARTS LIST

SWING ARM/SHOCK ABSORBERS (H2-B/C)

| ITEM NAME | PART NUMBER | QUANTITY |
|----------------------------------|-------------|----------|
| SWINGING ARM (Ref # 1) | 33001-059 | 1 |
| BOLT (Ref # 2) | 92001-1578 | 2 |
| WASHER SPRING 8MM (Ref # 3) | 461F0800 | 2 |
| STOPPER,CHAIN ADJUST (Ref # 4) | 33044-001 | 2 |
| SHAFT-SWING ARM PIVOT (Ref # 5) | 33032-038 | 1 |
| CAP,SWING ARM (Ref # 6) | 33035-007 | 2 |
| "0" RING,30MM (Ref # 7) | 671B2530 | 2 |
| SLEEVE SWING ARM (Ref # 8) | 33034-009 | 2 |
| BUSHING-SWING ARM (Ref # 9) | 33033-009 | 2 |
| SLEEVE SWING ARM LONG (Ref # 10) | 33034-008 | 1 |
| NUT-SELF LOCKING (Ref # 11) | 92019-012 | 1 |
| GREASE NIPPLE (Ref # 12) | 92005-002 | 1 |
| ADJUSTER,CHAIN D=10MM (Ref # 13) | 33040-063 | 2 |
| NUT 10MM (Ref # 14) | 315B1000 | 2 |
| BOLT-CHN ADJUST 10MM (Ref # 15) | 92001-143 | 2 |
| SHOCK ABSBR RR (Ref # 16) | 45014-096 | 2 |
| BUSHING,SHCK ABS RUB (Ref # 17) | 45017-015 | 2 |
| BUSHING, SHCK ABS RUB (Ref # 18) | 45017-012 | 2 |
| BUSHING,SHOCK ABSORB (Ref # 19) | 45016-008 | 2 |
| NUT SHOCK ABSORBER (Ref # 20) | 92020-003 | 2 |
| WASHER SPRING 10MM (Ref # 21) | 461F1000 | 4 |
| WASHER,PLAIN,10MM (Ref # 22) | 92022-246 | 4 |
| BOLT HEX HEAD 10X35 (Ref # 23) | 113N1035 | 2 |
| TORQUE LINK-REAR BRK (Ref # 24) | 43007-033 | 1 |
| PIN REAR TORQUE LINK (Ref # 25) | 43009-001 | 1 |
| PIN COTTER 3.0X25 (Ref # 26) | 550D3025 | 1 |
| BOLT-HEX HEAD,10X40 (Ref # 27) | 92003-097 | 1 |
| WASHER SPRING 10MM (Ref # 28) | 461F1000 | 1 |
| NUT 10MM (Ref # 29) | 315B1000 | 1 |

1972 Mach IV PARTS LIST

SWING ARM/SHOCK ABSORBERS (H2-B/C)

| ITEM NAME | PART NUMBER | QUANTITY |
|----------------------------------|-------------|----------|
| PIN,SNAP (Ref # 30) | 554A0800 | 1 |
| REFLECTOR,REFLEX,REAR (Ref # 31) | 28001-030 | 2 |
| DAMPER RUBBER-REFLEX (Ref # 32) | 28016-002 | 2 |