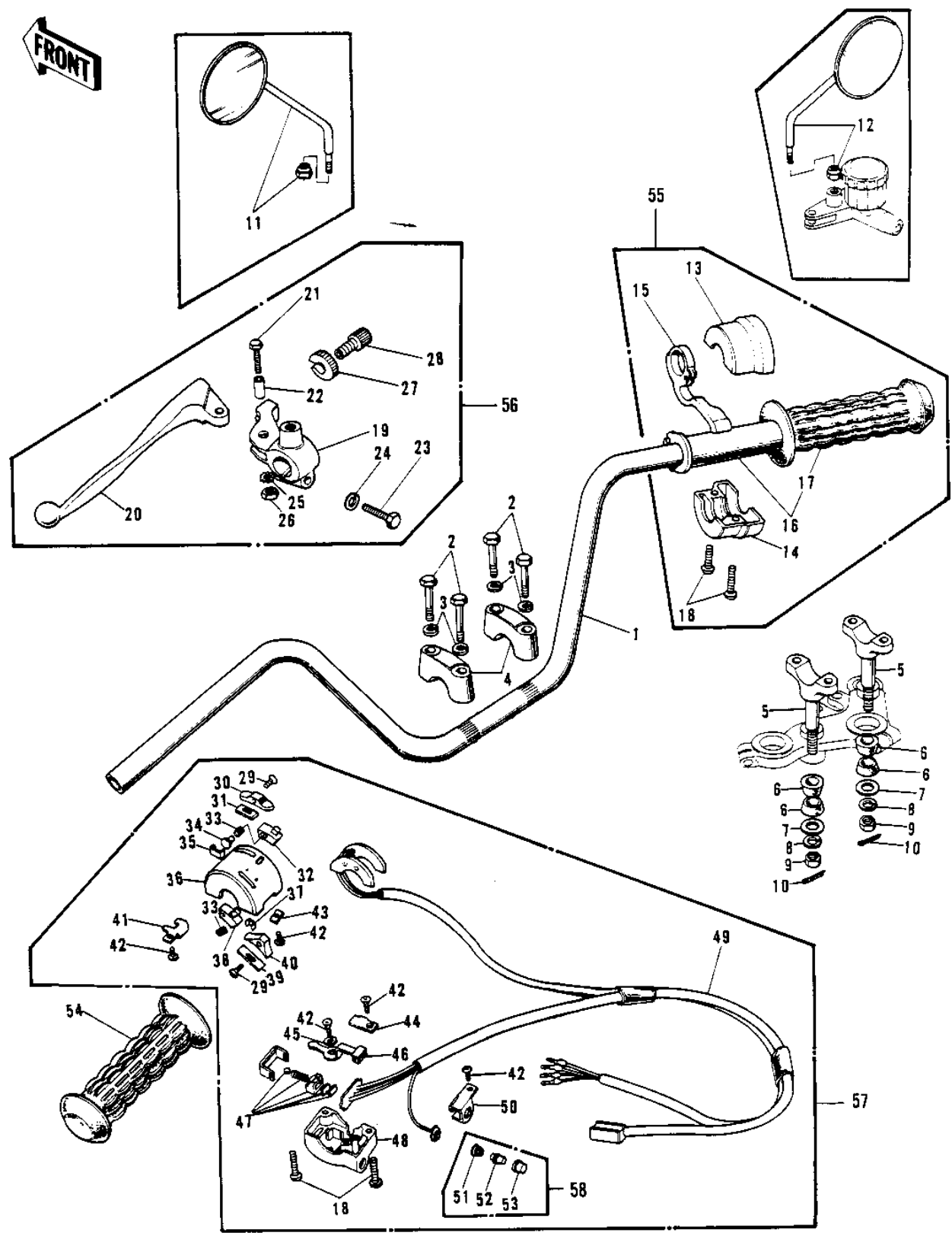


# 1974 Mach IV PARTS DIAGRAM

HANDLEBAR (H2/A)



# 1974 Mach IV PARTS LIST

## HANDLEBAR (H2/A)

ITEM NAME	PART NUMBER	QUANTITY
HANDLEBAR (Ref # 1)	46003-025	
BOLT 8X38 (Ref # 2)	92001-1405	
BOLT 8X38 (Ref # 2)	92001-1405	
WASHER SPRING 8MM (Ref # 3)	461F0800	
HOLDER-HANDLEBAR (Ref # 4)	46012-008	
HOLDER-HANDLEBAR LOW (Ref # 5)	46012-010	
DAMPER RUBBER,HANDLE (Ref # 6)	92075-275	
WASHER-HANDLEBAR FIT (Ref # 7)	92022-196	
NUT,10MM (Ref # 8)	314B1000	
NUT,10MM (Ref # 9)	314B1000	
PIN COTTER 2.5X20 (Ref # 10)	550D2520	
REAR VIEW MIRROR,L.H (Ref # 11)	56003-009	
REAR VIEW MIRROR,R.H (Ref # 12)	56002-020	
CASE-R.H LOWER (Ref # 13)	46023-006	
CASE-R.H LOWER (Ref # 14)	46023-006	
LEVER-STARTER (Ref # 15)	46096-007	
GRIP ASSY-THROTTLE (Ref # 16)	46019-021	
GRIP ASSY-THROTTLE (Ref # 16)	46019-023	
RUBBER-R.H GRIP (Ref # 17)	46061-012	
UNAVAILABLE IN PRICE BOOK (Ref # 18)	20B0522A	
HOLDER-CLUTCH LEV,BLK (Ref # 19)	46094-011-21	
UNAVAILABLE IN PRICE BOOK (Ref # 19)	46094-011-21-	
LEVER-CLUTCH (Ref # 20)	46092-015	
BOLT HEX HEAD 5X20 (Ref # 21)	92007-020	
COLLAR LEVER (Ref # 22)	46059-011	
BOLT HEX HEAD 6X25 (Ref # 23)	110N0625	
WASHER PLAIN 6MM (Ref # 24)	410B0600	
WASHER LOCK 5MM (Ref # 25)	464H0500	
NUT 5MM (Ref # 26)	312B0500	

# 1974 Mach IV PARTS LIST

## HANDLEBAR (H2/A)

ITEM NAME	PART NUMBER	QUANTITY
NUT-LOCK (Ref # 27)	46056-005	
SCREW ADJUST (Ref # 28)	46055-006	
SCREW CNTSNK HD 3X8 (Ref # 29)	221B0308A	
KNOB-L.H SWITCH,B (Ref # 30)	46044-008	
SPRING-L.H SW KNOB,B (Ref # 31)	46031-006	
SWITCH-L.H,A (Ref # 32)	46089-005	
SPRING-L.H SWITCH (Ref # 33)	46031-007	
CONTACT-L.H SWITCH (Ref # 34)	46079-004	
PLATE-L.H SW CNTACT,B (Ref # 35)	46080-004	
CASE-L.H UPPER (Ref # 36)	46086-014	
PLATE-L.H SW CNTACT,A (Ref # 37)	46080-003	
SWITCH-L.H,B (Ref # 38)	46089-006	
SPRING L.H SW KNOB (Ref # 39)	46031-003	
KNOB-L.H SWITCH (Ref # 40)	46044-011	
HOLDER-L.H SW UPPER,A (Ref # 41)	46085-018	
SCREW PAN HEAD 3X5 (Ref # 42)	220B0305A	
HOLDER-L.H SW UPPER,B (Ref # 43)	46085-019	
HOLDER-L.H SW LOWER,A (Ref # 44)	46085-016	
WASHER (Ref # 45)	92095-010	
KNOB-SWITCH (Ref # 46)	46044-007	
SLIDE BLOCK AY-L.H SW (Ref # 47)	46089-007	
CASE-L.H LOWER (Ref # 48)	46077-016	
WIRING HARNESS-L.H SW (Ref # 49)	46082-018	
HOLDER-L.H SW LOWER,B (Ref # 50)	46085-017	
SWITCH ASSY,HORN BUTN (Ref # 51)	27010-1009	
SWITCH ASSY,HORN BUTN (Ref # 52)	27010-1009	
SWITCH ASSY,HORN BUTN (Ref # 53)	27010-1009	
RUBBER-L.H GRIP (Ref # 54)	46075-017	
CASE ASSY-R.H (Ref # 55)	46018-018	