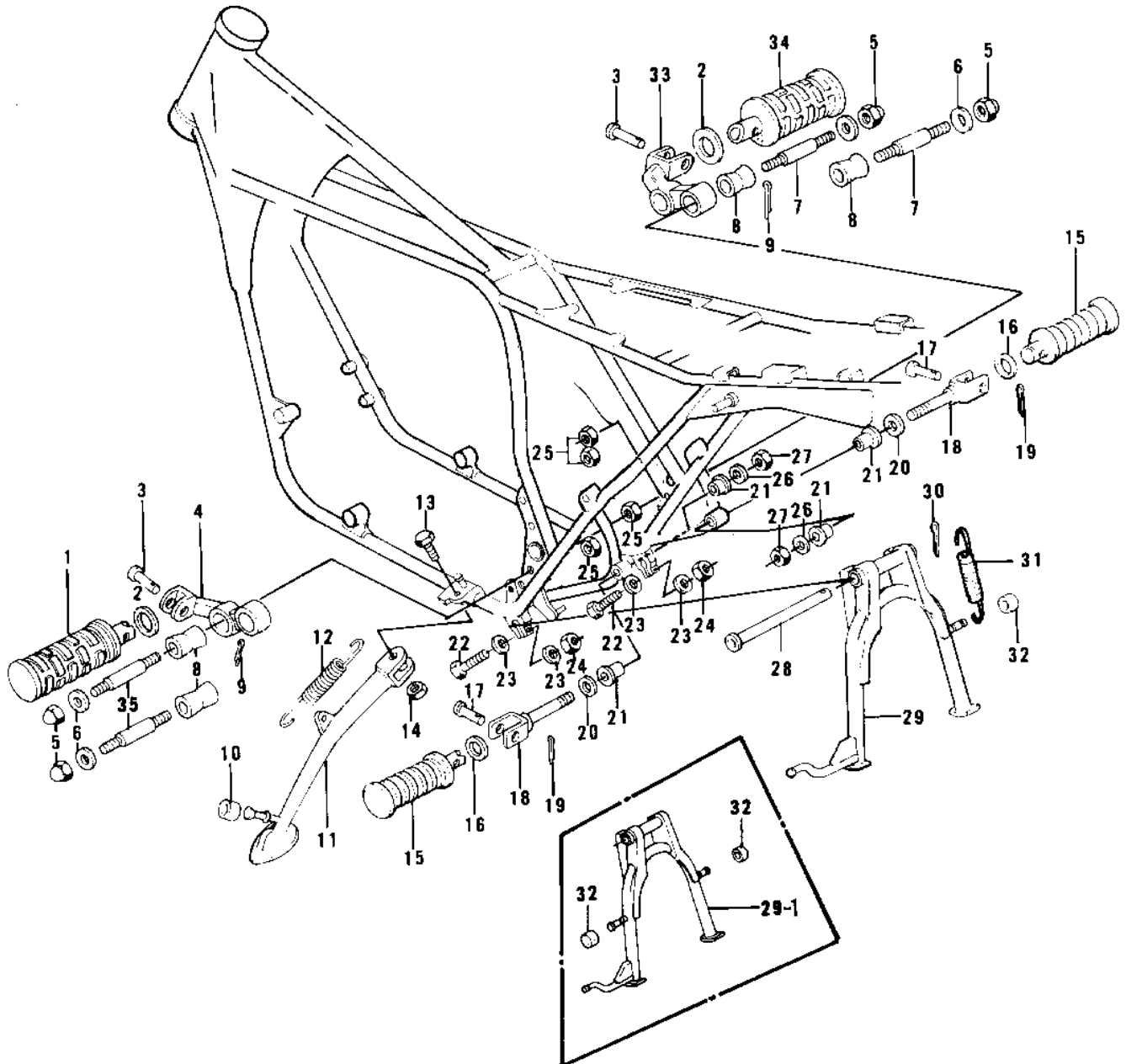


1978 KZ750-B3 PARTS DIAGRAM

FOOTRESTS/STANDS



1978 KZ750-B3 PARTS LIST

FOOTRESTS/STANDS

ITEM NAME	PART NUMBER	QUANTITY
BAR-FOOTREST,L.H (Ref # 1)	34028-011	1
WASHER,PLAIN (Ref # 2)	92022-250	2
PIN-FOOTREST BAR FIT (Ref # 3)	92043-080	2
BRACKET,FOOTREST L.H. (Ref # 4)	34003-059	1
NUT,CAP AND LOCK,8MM (Ref # 5)	92019-013	4
CAP,FOOTRESTBAR (Ref # 6)	92102-010	4
STUD,FOOTREST BAR FIT (Ref # 7)	92004-048	2
DAMPER RUBBER,FOOTRES (Ref # 8)	92075-293	4
PIN,COTTER,2.5X15 (Ref # 9)	550D2515	2
DAMPER RUBB SIDE STND (Ref # 10)	92075-031	1
STAND-SIDE (Ref # 11)	34024-059	1
SPRING,SIDE STAND (Ref # 12)	34025-005	1
BOLT-SIDE STAND (Ref # 13)	92003-079	1
NUT 10MM (Ref # 14)	315B1000	1
RUBBER,FOOTREST (Ref # 15)	92076-027	2
WASHER-PLAIN (OPT) (Ref # 16)	92022-199	2
PIN (Ref # 17)	92043-1464	2
HOLDER-STEP RR (Ref # 18)	34029-008	2
BRACKET,FOOTREST BAR (Ref # 18)	34029-014	2
PIN,COTTER,2.0X12 (Ref # 19)	550D2012	2
WASHER-PLAIN (Ref # 20)	92022-206	2
BUSHING,MUFFLER FITT (Ref # 21)	92092-010	4
BOLT (Ref # 22)	92001-1578	2
WASHER PLAIN 8MM (Ref # 23)	410B0800	4
NUT,LOCK,8MM (Ref # 24)	92017-013	2
NUT 10MM (Ref # 25)	315B1000	4
WASHER PLAIN 10MM (Ref # 26)	411B1000	2
NUT,LOCK,10MM (Ref # 27)	92019-021	2
SHAFT,MAIN STAND (Ref # 28)	34019-016	1

1978 KZ750-B3 PARTS LIST

FOOTRESTS/STANDS

ITEM NAME	PART NUMBER	QUANTITY
STAND,MAIN (Ref # 29)	34011-039	1
STAND-MAIN (Ref # 29-1)	34011-042	1
PIN,COTTER,3.0X28 (Ref # 30)	550D3028	1
PIN COTTER 3.0X30 (Ref # 30)	550D3030	1
SPRING,MAIN STAND (Ref # 31)	34023-017	1
DAMPER RUBBER,MN STND (Ref # 32)	92075-285	1
DAMPER RUBBER,MN STND (Ref # 32)	92075-285	2
BRACKET,FOOTREST R.H. (Ref # 33)	34003-060	1
BAR-FOOTREST,R.H (Ref # 34)	34028-012	1
STUD,FOOTREST BAR FIT (Ref # 35)	92004-048	2
STUD (Ref # 35)	92004-067	2