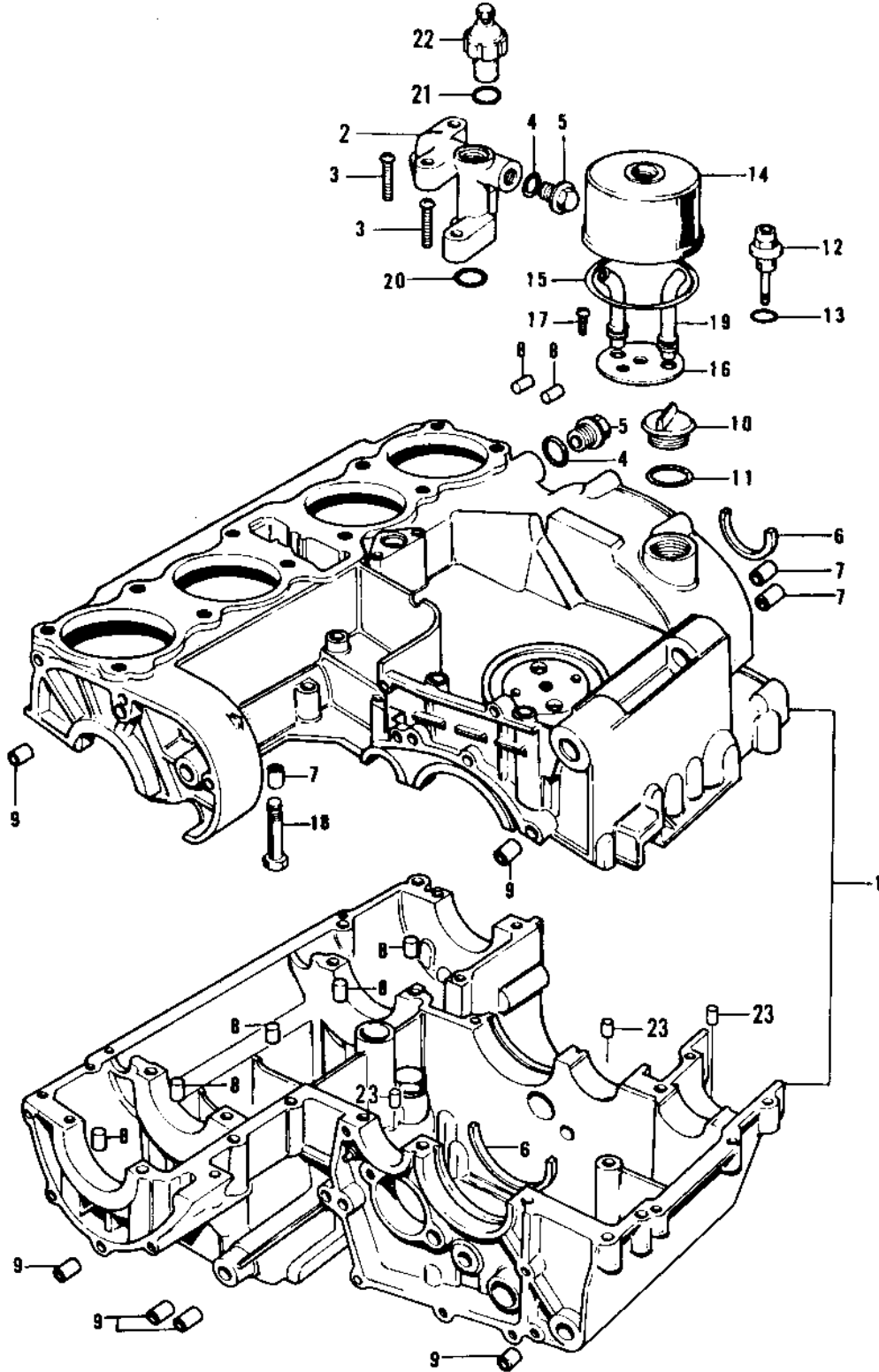


# 1974 Z1 PARTS DIAGRAM

## CRANKCASE/BREATHER COVER



# 1974 Z1 PARTS LIST

## CRANKCASE/BREATHER COVER

ITEM NAME	PART NUMBER	QUANTITY
CRANKCASE SET (Ref # 1)	14001-5022	
CRANKCASE SET (Ref # 1)	14001-5022	
CRANKCASE SET (Ref # 1)	14001-5022	
CRANKCASE SET (Ref # 1)	14001-5025	
CRANKCASE SET (Ref # 1)	14001-5025	
CRANKCASE SET (Ref # 1)	14001-5025	
PIPE (Ref # 2)	16109-003	
SCREW PAN HEAD 6X35 (Ref # 3)	220B0635	
BOLT,HEX HEAD,6X35 (Ref # 3)	92001-164	
"O" RING,15MM (Ref # 4)	670B2015	
PLUG (Ref # 5)	92066-021	
RING,POSITION (Ref # 6)	14013-1004	
PIN,DOWEL,10X8.2X14 (Ref # 7)	92043-1037	
PIN,DOWEL,6X14 (Ref # 8)	610A0614	
PIN-DOWEL (Ref # 9)	92042-007	
PLUG,OIL FILLER (Ref # 10)	16115-013	
"O" RING,31MM (Ref # 11)	92055-049	
BOLT,BREATHER FITTING (Ref # 12)	92003-098	
"O" RING,16MM (Ref # 13)	670B2016	
BODY,BREATHER (Ref # 14)	14070-003	
"O" RING,91MM (Ref # 15)	92055-052	
PLATE,BREATHER (Ref # 16)	14068-007	
PLATE,BREATHER (Ref # 16)	14068-007	
SCREW PAN HEAD 6X18 (Ref # 17)	220B0618	
BOLT,HEX HEAD,8X72 (Ref # 18)	92003-107	
PIPE,BREATHER PLATE (Ref # 19)	92059-118	
"O" RING,18MM (Ref # 20)	670B2018	
"O" RING (Ref # 21)	92055-055	
SWITCH,OIL PRESSURE (Ref # 22)	16144-002	