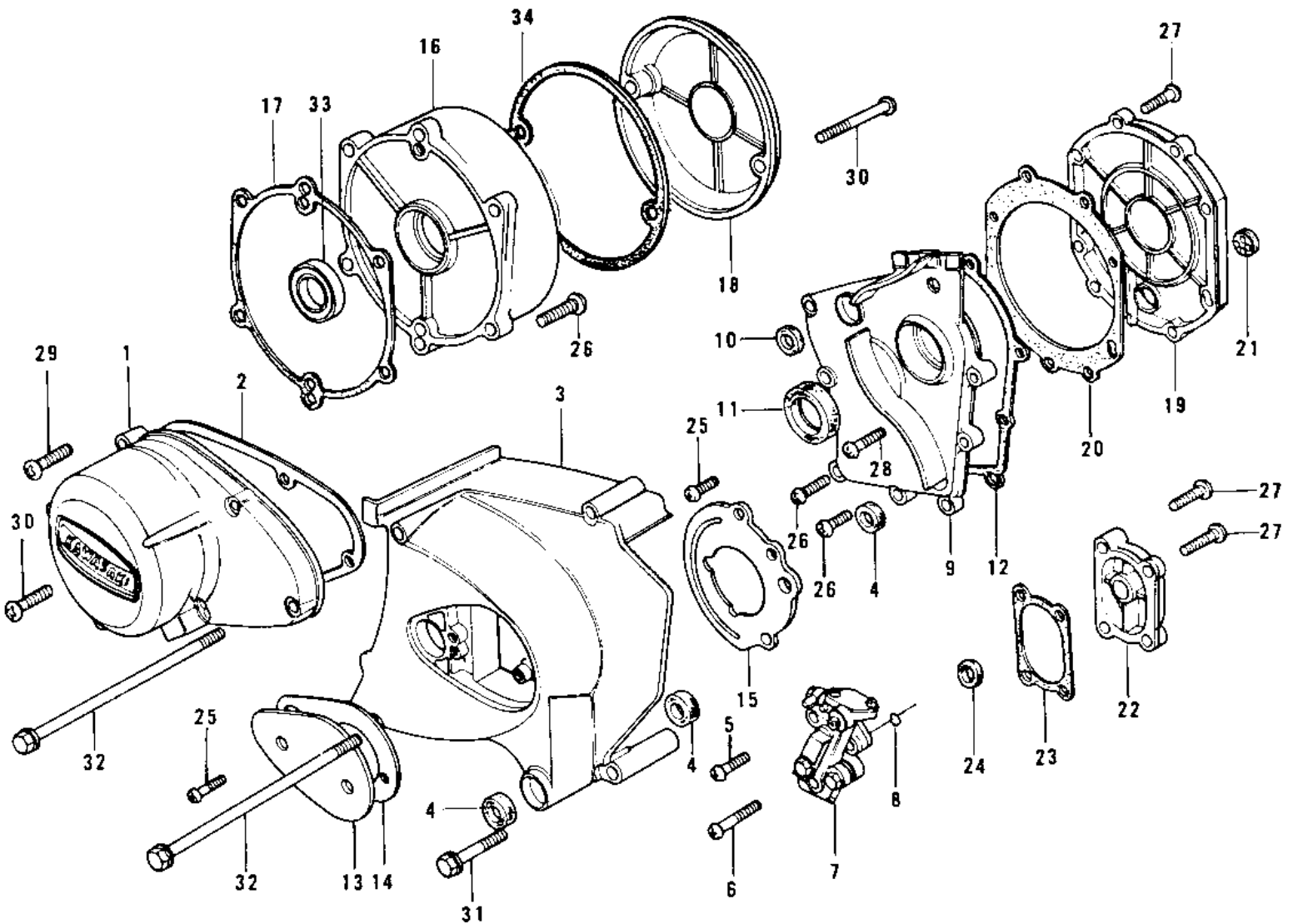


# 1974 Z1 PARTS DIAGRAM

ENGINE COVERS



# 1974 Z1 PARTS LIST

## ENGINE COVERS

ITEM NAME	PART NUMBER	QUANTITY
COVER,L.H ENGINE (Ref # 1)	14031-1020	
GASKET,GENERATOR COVE (Ref # 2)	11060-1075	
COVER,FRONT CHAIN (Ref # 3)	14026-026	
COVER,FRONT CHAIN (Ref # 3)	14026-026	
OIL SEAL SB12205 (Ref # 4)	92049-004	
SCREW PAN HEAD 5X12 (Ref # 5)	220B0512	
SCREW PAN CROSS,5X28 (Ref # 6)	220B0528	
OIL PUMP ASSY (Ref # 7)	16082-056	
OIL PUMP ASSY (Ref # 7)	16082-056	
"O" RING,OIL PUMP (Ref # 8)	92055-053	
COVER,TRANSMISSION (Ref # 9)	14025-1106	
OIL SEAL,TC7187 (Ref # 10)	92050-048	
OIL SEAL SC325210 (Ref # 11)	92050-024	
GASKET,MISSION COVER (Ref # 12)	14058-004	
COVER,OIL PUMP (Ref # 13)	14026-012	
GASKET,CHAIN COVER (Ref # 14)	14045-015	
COVER,ENGINE SPROCKET (Ref # 15)	14024-008	
COVER,R.H ENGINE (Ref # 16)	14032-083	
GASKET,RH ENGINE COVE (Ref # 17)	11060-1071	
COVER,BREAKER POINT (Ref # 18)	14027-023-80	
COVER,CLUTCH (Ref # 19)	14032-121	
GASKET,CLUTCH (Ref # 20)	14046-024	
GAUGE,OIL LEVEL (Ref # 21)	52015-004	
COVER,KICK SHAFT,BARL (Ref # 22)	14032-075-2H	
COVER,KICK SHAFT,BARL (Ref # 22)	14032-075-2H	
GASKET,KICK COVER (Ref # 23)	14046-025	
OIL SEAL,SC22325 (Ref # 24)	92049-1048	
SCREW PAN HEAD 6X12 (Ref # 25)	220B0612	
SCREW PAN HEAD 6X22 (Ref # 26)	220B0622	

# 1974 Z1 PARTS LIST

## ENGINE COVERS

ITEM NAME	PART NUMBER	QUANTITY
SCREW PAN HEAD 6X25 (Ref # 27)	220B0625	
SCREW PAN HEAD 6X28 (Ref # 28)	220B0628	
SCREW PAN HEAD 6X30 (Ref # 29)	220B0630	
SCREW PAN HEAD 6X40 (Ref # 30)	220B0640	
BOLT,6X70 (Ref # 31)	110G0670	
BOLT-UPSET,6X125 (Ref # 32)	112G06125	
OIL SEAL,S25407R (Ref # 33)	92050-047	
GASKET,POINT CAP (Ref # 34)	14050-006	