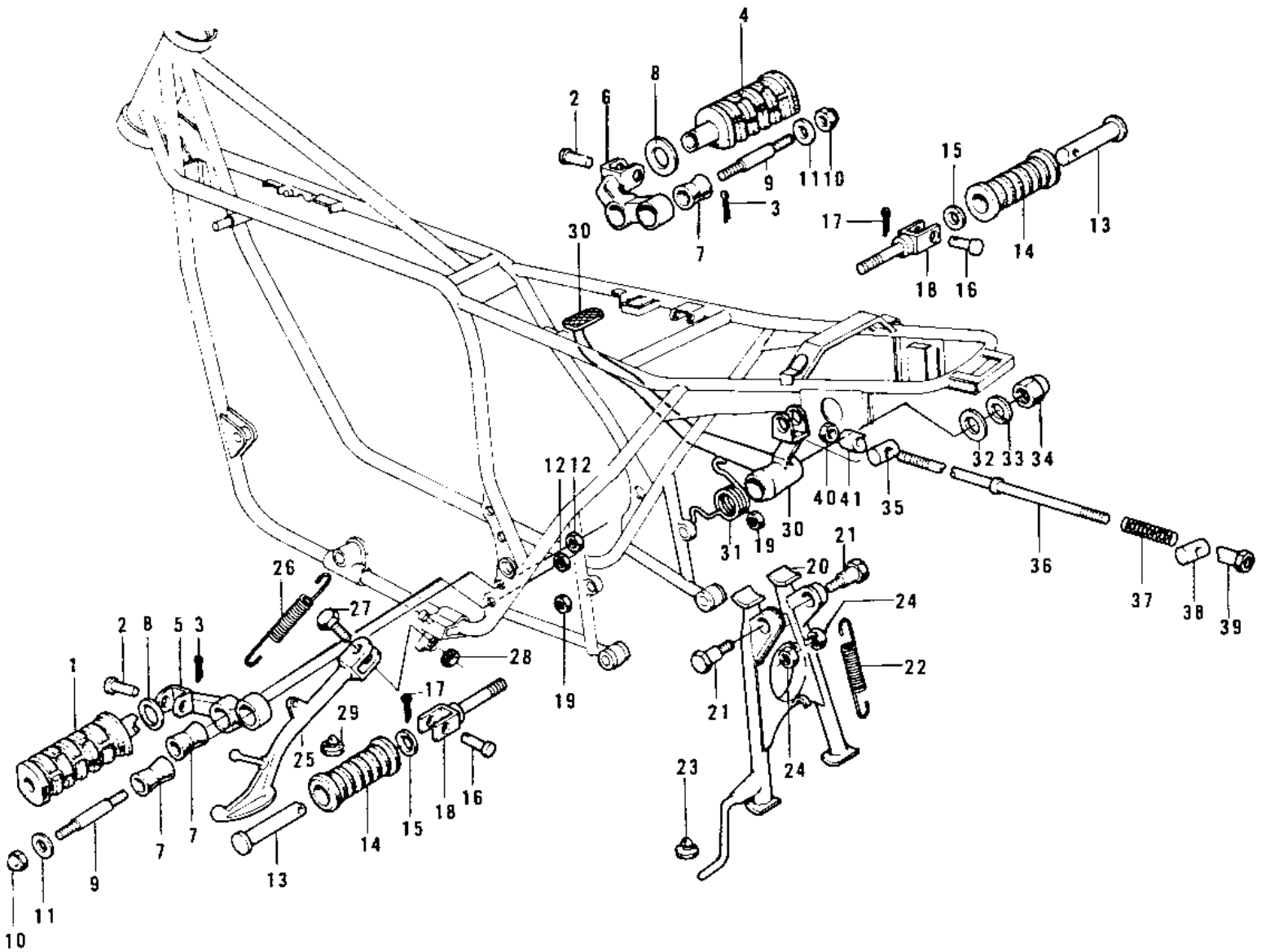


1974 Z1 PARTS DIAGRAM

FOOTRESTS/STANDS/BRAKE PEDAL



1974 Z1 PARTS LIST

FOOTRESTS/STANDS/BRAKE PEDAL

ITEM NAME	PART NUMBER	QUANTITY
BAR-FOOTREST,L.H (Ref # 1)	34028-011	
PIN-FOOTREST BAR FIT (Ref # 2)	92043-080	
PIN COTTER 2.5X16 (Ref # 3)	550D2516	
BAR-FOOTREST,R.H (Ref # 4)	34028-012	
BRACKET,FOOTREST,L.H (Ref # 5)	34003-036	
BRACKET,FOOTREST,R.H (Ref # 6)	34003-037	
DAMPER RUBBER,FOOTRST (Ref # 7)	92075-140	
WASHER,PLAIN (Ref # 8)	92022-250	
STUD,FOOTREST BAR FIT (Ref # 9)	92004-048	
NUT,CAP AND LOCK,8MM (Ref # 10)	92019-013	
CAP,FOOTRESTBAR (Ref # 11)	92102-010	
NUT 10MM (Ref # 12)	315B1000	
BAR-RR FOOTREST (OPT) (Ref # 13)	34028-009	
RUBBER,REAR FOOTREST (Ref # 14)	92076-024	
WASHER-PLAIN (OPT) (Ref # 15)	92022-199	
PIN (Ref # 16)	92043-1464	
PIN,COTTER,2.0X12 (Ref # 17)	550D2012	
BRACKET,REAR FOOTREST (Ref # 18)	33028-011	
NUT-HEX-FINE,12MM (Ref # 19)	315B1200	
STAND-MAIN (Ref # 20)	34011-1015	
SHAFT MAIN STAND (Ref # 21)	34019-014	
SPRING,MAIN STAND (Ref # 22)	34023-012	
DAMPER RUBB MAIN STAD (Ref # 23)	92075-015	
NUT,MAIN STAND FITT (Ref # 24)	92016-044	
STAND-SIDE (Ref # 25)	34024-060	
SPRING,SIDE STAND (Ref # 26)	34025-005	
BOLT-SIDE STAND (Ref # 27)	92003-079	
NUT 10MM (Ref # 28)	315B1000	
DAMPER RUBBER,STD STM (Ref # 29)	92075-157	

1974 Z1 PARTS LIST

FOOTRESTS/STANDS/BRAKE PEDAL

ITEM NAME	PART NUMBER	QUANTITY
PEDAL,BRAKE (Ref # 30)	43001-044	
SPRING,BRAKE PEDAL (Ref # 31)	43005-041	
SPRING,BRAKE PEDAL (Ref # 31)	43005-041	
WASHER,8.5X20X1.6 (Ref # 32)	92022-1561	
WASHER SPRING 8MM (Ref # 33)	461F0800	
NUT,CAP AND LOCK,8MM (Ref # 34)	92019-013	
PIN,REAR BRAKE ROD (Ref # 35)	92043-095	
ROD,REAR BRAKE (Ref # 36)	43011-017	
SPRING,BRAKE ROD (Ref # 37)	43012-001	
PIN-BRAKE ROD (Ref # 38)	92043-065	
NUT-BRAKE ROD ADJUST (Ref # 39)	92015-042	
NUT (Ref # 40)	92019-008	
PIN,BRAKE ROD (Ref # 41)	92027-177	