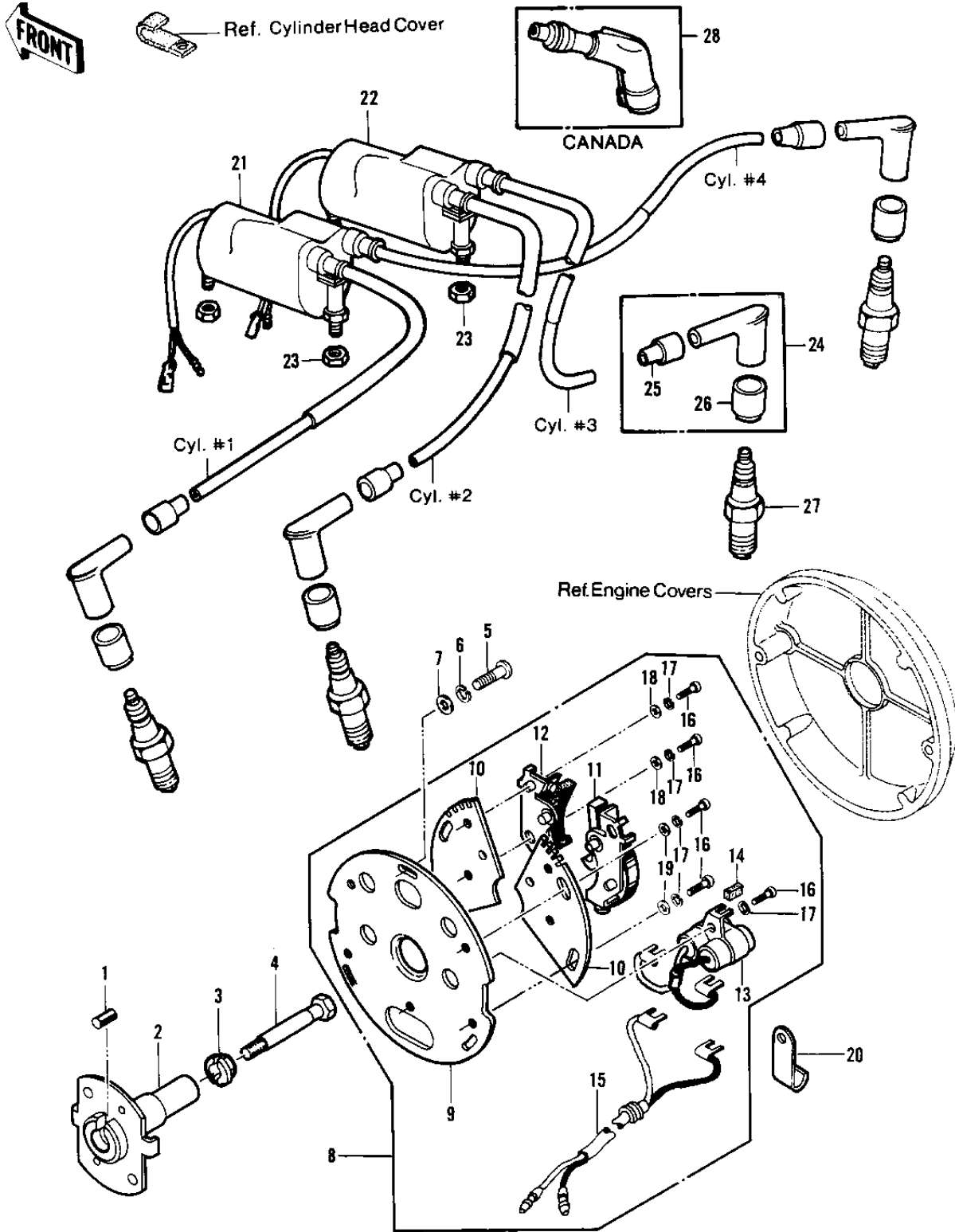


1978 KZ1000 LTD PARTS DIAGRAM

IGNITION (77-'78 B1/B2)



1978 KZ1000 LTD PARTS LIST

IGNITION ('77-'78 B1/B2)

ITEM NAME	PART NUMBER	QUANTITY
PIN-SPRING,4X8 (Ref # 1)	555A0408	1
ADVANCER,SPARK (Ref # 2)	21148-010	1
ADVANCER ASSY,SPARK (Ref # 2)	21148-1003	1
WASHER,SPARK ADVANCER (Ref # 3)	92022-244	1
BOLT,SPARK ADVANCER (Ref # 4)	92001-113	1
SCREW PAN HEAD 5X12 (Ref # 5)	220B0512	3
WASHER SPRING 5MM (Ref # 6)	461F0500	3
WASHER PLAIN 5MM (Ref # 7)	411B0500	3
BREAKER,CONTACT (Ref # 8)	21135-011	1
.PLATE,CONTACT BREAKER (Ref # 9)	21021-004	1
.PLATE,CONTACT BREAKER (Ref # 10)	21156-010	2
.BREAKER,CONTACT (Ref # 11)	21008-027	1
.BREAKER,CONTACT (Ref # 12)	21008-028	1
.CONDENSER (Ref # 13)	21013-035	1
.FELT OIL (Ref # 14)	21019-005	1
.WIRING HARNESS,BRAKE (Ref # 15)	21029-037	1
.SCREW PAN HEAD 4X8 (Ref # 16)	220B0408	9
.WASHER SPRING 4MM (Ref # 17)	461F0400	9
.WASHER PLAIN 4MM (Ref # 18)	410B0400	4
.WASHER PLAIN 4MM (Ref # 19)	410B0400	4
WASHER PLAIN 4MM (Ref # 19)	410B0400	4
UNAVAILABLE IN PRICE BOOK (Ref # 20)	21120-008	4
IGNITION COIL (Ref # 21)	21121-1003	1
COIL,IGNITION,#2&3 (Ref # 22)	21121-1004	1
NUT,LOCK 6MM (Ref # 23)	92017-014	4
CAP SPARK PLUG (Ref # 24)	21160-1014	4
.GROMMET,SPARK PLG CAP (Ref # 25)	21132-005	4
.GROMMET-PLUG CAP,A (Ref # 26)	21131-004	4
SPARK PLUG B8ES (Ref # 27)	B8ES	4