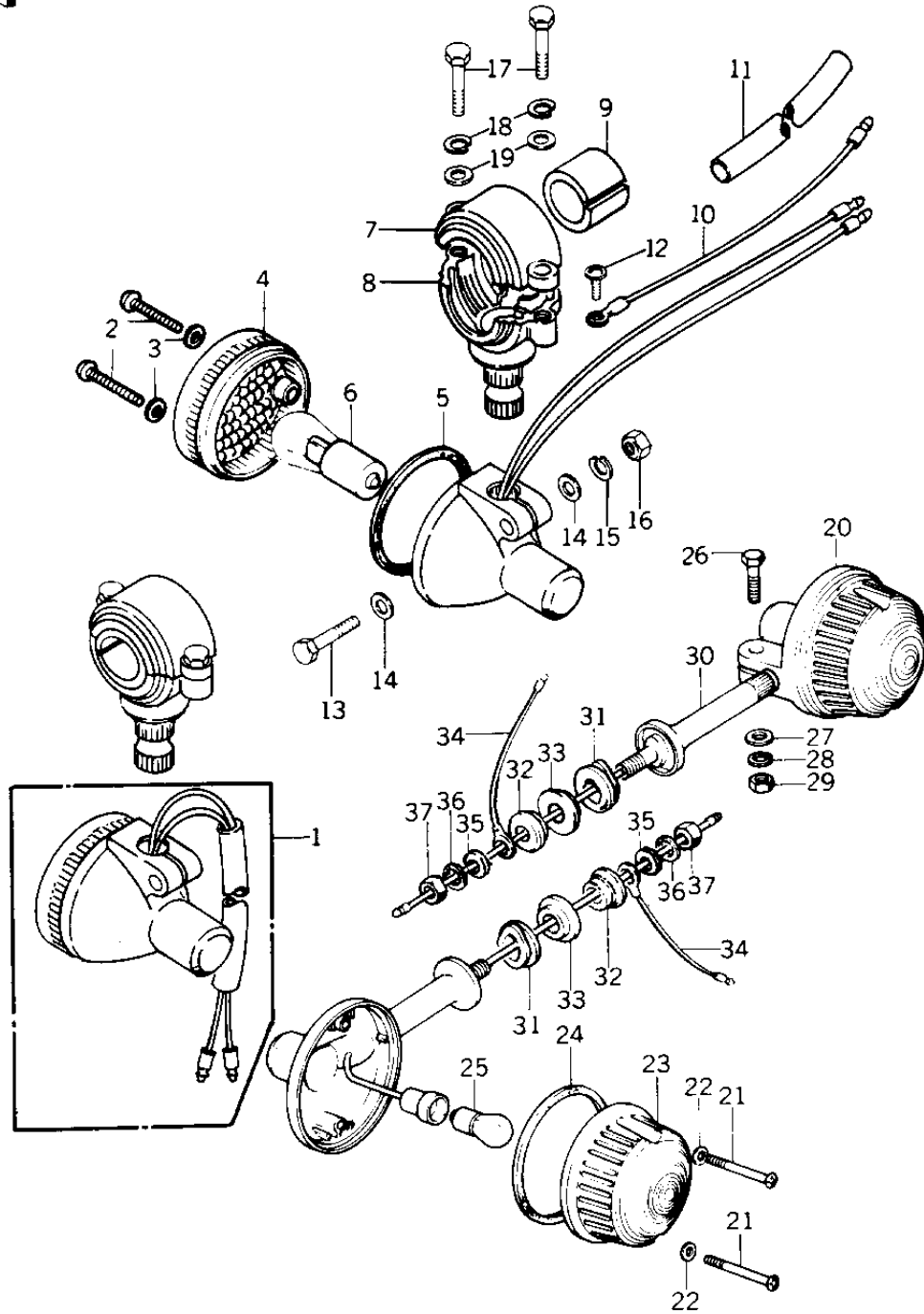


# 1978 KZ1000 LTD PARTS DIAGRAM

TURN SIGNALS ('77-'78 B1/B2)



# 1978 KZ1000 LTD PARTS LIST

## TURN SIGNALS ('77-'78 B1/B2)

ITEM NAME	PART NUMBER	QUANTITY
LAMP,FRNT,TURN SIGNAL (Ref # 1)	23040-1004	2
SCREW-PAN HEAD,4X20 (Ref # 2)	220E0420A	4
WASHER-PLAIN,4MM (Ref # 3)	23058-002	4
LENS,TURN SIGNAL LAMP (Ref # 4)	23048-1001	2
GASKET-SIG LAMP LENS (Ref # 5)	23050-003	2
BULB,12V 23/8W (Ref # 6)	92069-060	2
BRACKET,SIGNAL LAMP (Ref # 7)	23051-1013	2
BRACKET,SIGNAL LAMP (Ref # 7)	23051-1013	2
BRACKET,FRNT TURN SIG (Ref # 8)	23051-1004	2
DAMPER RUBBER (Ref # 9)	23066-003	2
WIRE,LEAD,TURN SIGNAL (Ref # 10)	26011-066	2
WIRE-TURN SIGNAL LEAD (Ref # 10)	26011-061	2
COVER-WIRING HARNESS (Ref # 11)	26009-004	2
SCREW PAN HEAD 3X5 (Ref # 12)	220B0305A	2
BOLT-UPSET (Ref # 13)	112G0630	2
WASHER PLAIN 6MM (Ref # 14)	411B0600	4
WASHER SPRING 6MM (Ref # 15)	461F0600	2
NUT 6MM (Ref # 16)	311B0600	2
BOLT (Ref # 17)	110N0516	4
WASHER SPRING 5MM (Ref # 18)	461F0500	4
WASHER-PLAIN,5MM (Ref # 19)	410D0500	4
LAMP ASSY,TURN SIGNAL (Ref # 20)	23040-034	2
LAMP-TURN SIGNAL (Ref # 20)	23040-029	2
SCREW-PAN HEAD,4X35 (Ref # 21)	220E0435A	4
WASHER-PLAIN,4MM (Ref # 22)	23058-002	4
LENS-SIGNAL LAMP (Ref # 23)	23048-1024	2
GASKET,TURN SIG LAMP (Ref # 24)	23050-002	2
BULB 12V 32CP (Ref # 25)	92069-055	2
BOLT-UPSET (Ref # 26)	112G0630	2

## 1978 KZ1000 LTD PARTS LIST

### TURN SIGNALS ('77-'78 B1/B2)

ITEM NAME	PART NUMBER	QUANTITY
WASHER PLAIN 6MM (Ref # 27)	411B0600	2
WASHER SPRING 6MM (Ref # 28)	461F0600	2
NUT 6MM (Ref # 29)	311B0600	2
BRACKET-TURN SIG LAMP (Ref # 30)	23078-001	2
BRACKET,TURN SIG LAMP (Ref # 30)	23051-1006	2
DAMPER RUBBER (Ref # 31)	92075-128	2
COLLAR (Ref # 32)	92027-147	2
DAMPER RUBBER,SIG LM (Ref # 33)	92075-158	2
LEAD WIRE,SIGNAL LAMP (Ref # 34)	26011-063	2
WASHER,PLAIN (Ref # 35)	92022-239	2
WASHER SPRING 10MM (Ref # 36)	461F1000	2
NUT 10MM (Ref # 37)	315B1000	2