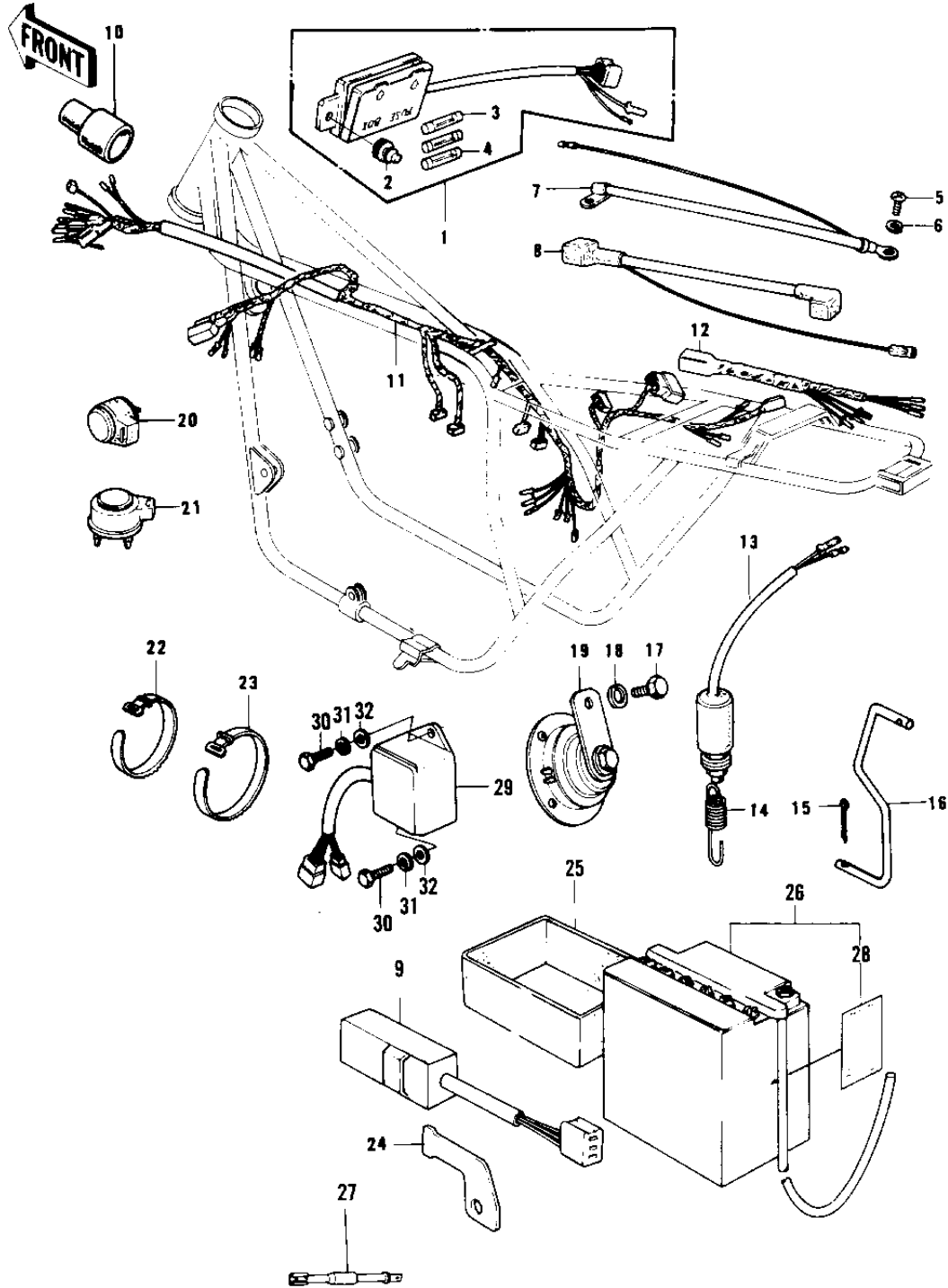


1979 KZ1000 LTD PARTS DIAGRAM

CHASSIS ELECTRICAL EQUIPMENT ('79-'80 B3)

Rel



81-39

1979 KZ1000 LTD PARTS LIST

CHASSIS ELECTRICAL EQUIPMENT ('79-'80 B3)

ITEM NAME	PART NUMBER	QUANTITY
FUSE ASSY (Ref # 1)	26004-1006	1
DAMPER RUBBER,FUSE (Ref # 2)	92075-279	1
FUSE-20A (Ref # 3)	26006-005	1
FUSE 10A (Ref # 4)	26006-003	3
BOLT,HEX HEAD,6MM (Ref # 5)	92001-137	1
WASHER SPRING 6MM (Ref # 6)	461F0600	1
WIRE,BATTERY GROUND (Ref # 7)	26010-054	1
WIRE,STARTER LEAD (Ref # 8)	26010-053	1
SWITCH,OUTAGE,INDICTR (Ref # 9)	28019-001	1
COVER WIRING HARNESS (Ref # 10)	26009-003	1
WIRING HARNESS,MAIN (Ref # 11)	26001-1055	1
WIRING HARNESS,MAIN (Ref # 11)	26001-1137	1
WIRING HARNESS,REAR (Ref # 12)	26002-031	1
SWITCH-BRAKE LAMP (Ref # 13)	27010-017	1
SPRING BRAKE LAMP SW (Ref # 14)	27011-009	1
PIN COTTER 1.6X10 (Ref # 15)	550D1610	1
HOOK,BRK LAMP SW SPR (Ref # 16)	27012-010	1
BOLT-SMALL-UPSET,8X16 (Ref # 17)	115G0816	1
WASHER SPRING 8MM (Ref # 18)	461F0800	1
HORN (Ref # 19)	27003-1006	1
RELAY-TURN SIGNAL (Ref # 20)	27002-011	1
RELAY,TURN SIGNAL (Ref # 21)	27002-016	1
BAND,SHORT (Ref # 22)	92072-030	1
BAND,WIRING HARNESS (Ref # 23)	92072-056	8
BRACKET,OUTAGE SWITCH (Ref # 24)	32060-014	1
CASE,BATTERY (Ref # 25)	32099-015	1
YUA BAT YB14L-A2 (Ref # 26)	26012-1008	1
*** N.L.A.*** (Canada) (Ref # 26)	26012-1009	1
REGULATOR (Ref # 27)	21066-026	1

1979 KZ1000 LTD PARTS LIST

CHASSIS ELECTRICAL EQUIPMENT ('79-'80 B3)

ITEM NAME	PART NUMBER	QUANTITY
LABEL-WARNING,BATTERY (Ref # 28)	56040-1036	1
SWITCH,RESERVE LIGHTI (Ref # 29)	27010-1024	1
SCREW PAN HEAD 6X20 (Ref # 30)	220B0620	2
WASHER SPRING 6MM (Ref # 31)	461F0600	2
WASHER PLAIN 6MM (Ref # 32)	410B0600	2