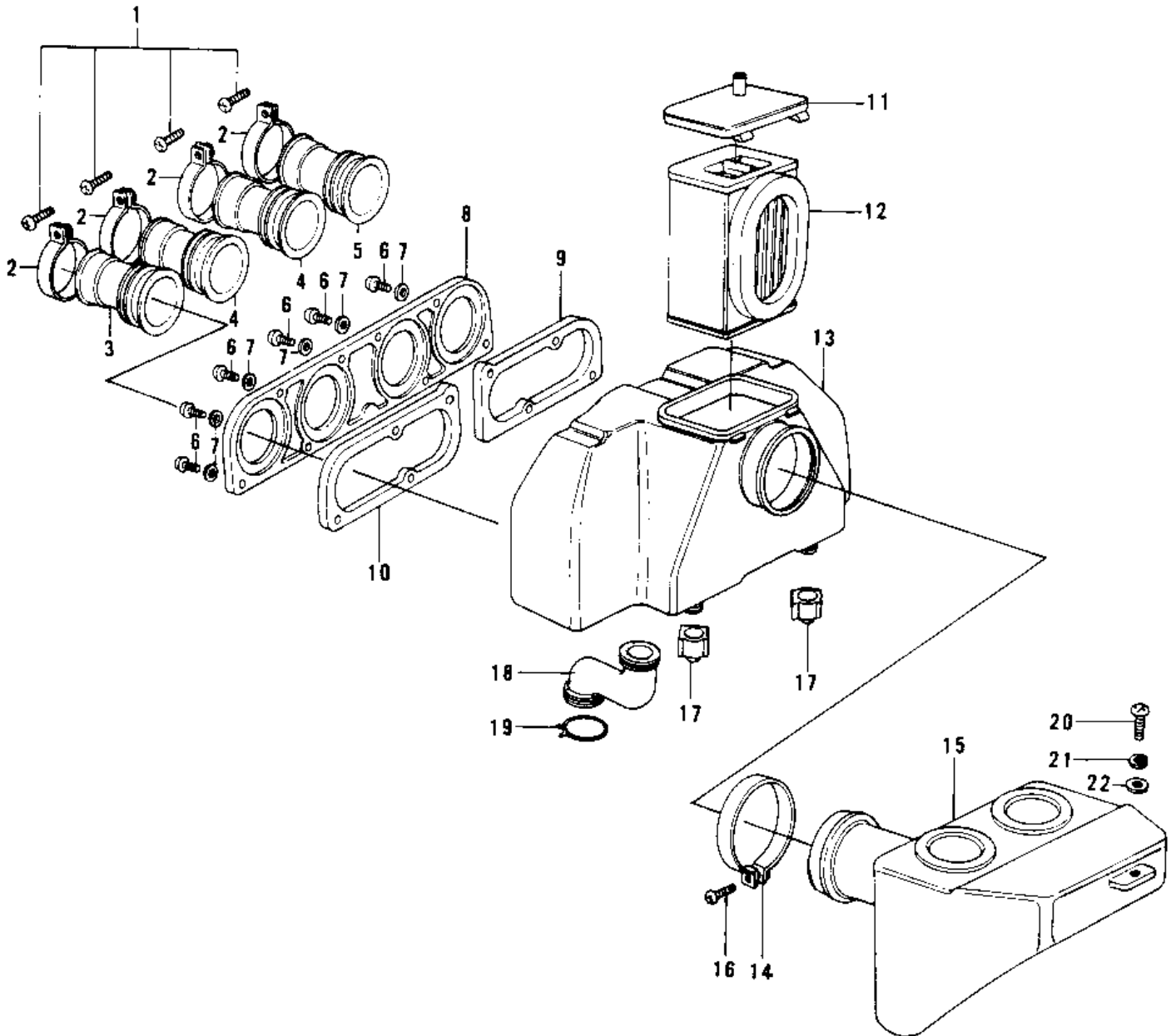


# 1978 Police 1000 PARTS DIAGRAM

AIR CLEANER (78 C1/C1A)



# 1978 Police 1000 PARTS LIST

## AIR CLEANER (78 C1/C1A)

| ITEM NAME                       | PART NUMBER | QUANTITY |
|---------------------------------|-------------|----------|
| SCREW-PAN-CROS (Ref # 1)        | 220B0535    | 4        |
| CLAMP-INLET PIPE (Ref # 2)      | 92037-061   | 4        |
| DUCT,AIR CLEANER,#1 (Ref # 3)   | 14073-1022  | 1        |
| DUCT,AIR CLEANER,#2, (Ref # 4)  | 14073-1023  | 2        |
| DUCT,AIR CLEANER,#4 (Ref # 5)   | 14073-1024  | 1        |
| SCREW PAN HEAD 4X16 (Ref # 6)   | 220B0416    | 8        |
| WASHER PLAIN 4MM (Ref # 7)      | 410B0400    | 8        |
| PLATE,CARBURETOR HOL (Ref # 8)  | 11040-001   | 1        |
| PLATE,CARBURETOR HOL (Ref # 9)  | 11040-003   | 1        |
| PLATE,CARBURETOR HOL (Ref # 10) | 11040-002   | 1        |
| CAP,AIR CLEANER (Ref # 11)      | 11012-075   | 1        |
| ELEMENT,AIR CLNR (Ref # 12)     | 11013-063   | 1        |
| BODY,AIR CLEANER (Ref # 13)     | 11011-1025  | 1        |
| CLAMP (Ref # 14)                | 92037-106   | 1        |
| SILENCER (Ref # 15)             | 11016-009   | 1        |
| BOLT,5X50 (Ref # 16)            | 92011-036   | 1        |
| CAP,DRAIN (Ref # 17)            | 11012-1083  | 2        |
| TUBE,DRAIN (Ref # 18)           | 92059-124   | 1        |
| CLAMP BREATHER PIPE (Ref # 19)  | 92037-028   | 1        |
| SCREW PAN HEAD 6X16 (Ref # 20)  | 220B0616    | 1        |
| WASHER SPRING 6MM (Ref # 21)    | 461F0600    | 1        |
| WASHER PLAIN 6MM (Ref # 22)     | 410B0600    | 1        |