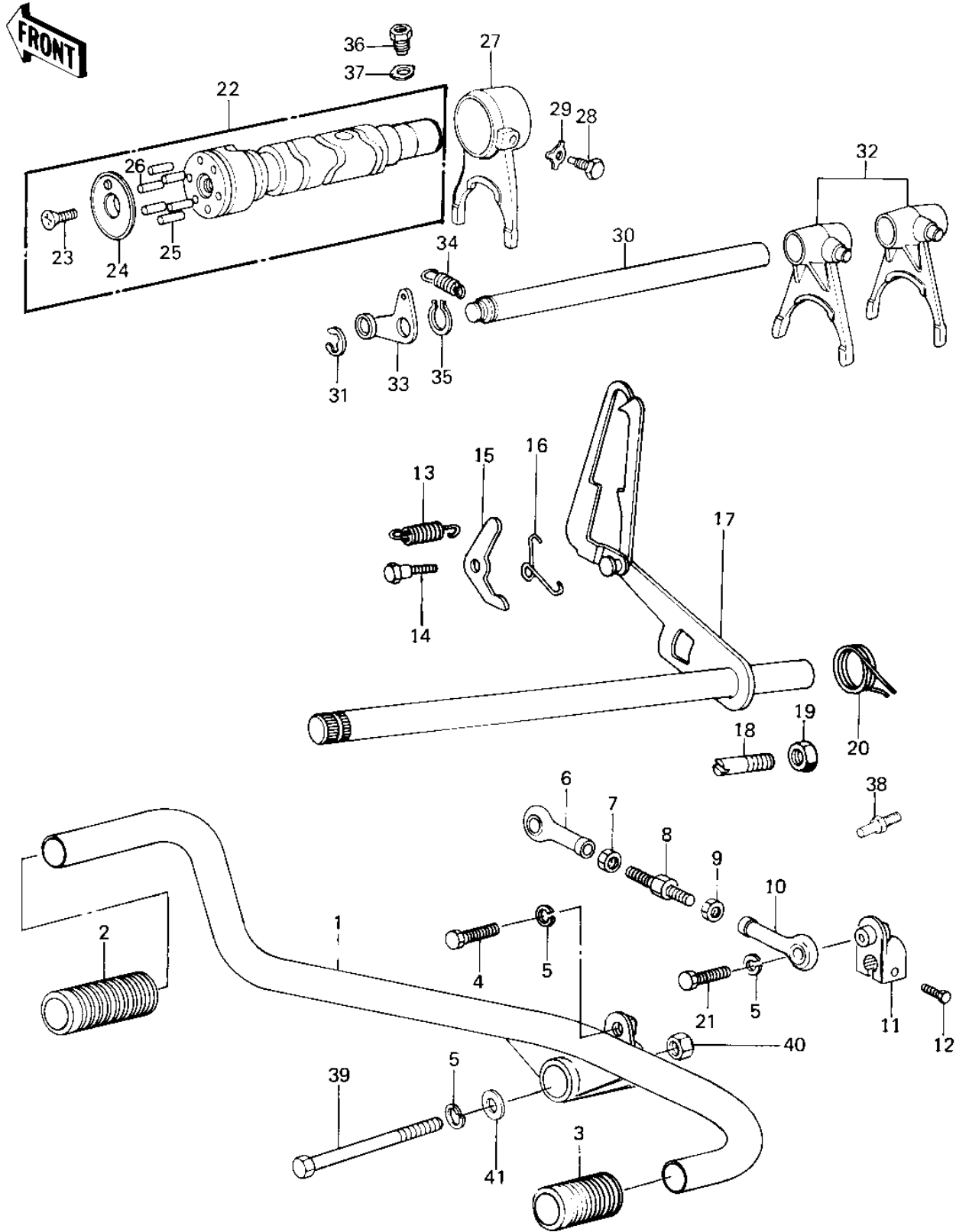


1981 Police 1000 PARTS DIAGRAM

GEAR CHANGE MECHANISM ('79-'81 G2/C3/C4)



1981 Police 1000 PARTS LIST

GEAR CHANGE MECHANISM ('79-'81 G2/C3/C4)

ITEM NAME	PART NUMBER	QUANTITY
PEDAL,GEAR CHANGE (Ref # 1)	13242-4001	1
RUBBER KICK PEDAL (Ref # 2)	13063-004	1
DAMPER RUBB,GEAR CHN (Ref # 3)	92075-1021	1
BOLT-SMALL-UPSET 8X2 (Ref # 4)	115G0825	1
WASHER SPRING 8MM (Ref # 5)	461F0800	3
ROD END,TIE LH FEMAL (Ref # 6)	39112-1004	1
NUT,LH THREAD (Ref # 7)	92015-1006	1
BOLT,GEAR CHG LINKAG (Ref # 8)	92001-1038	1
NUT,RH THREAD (Ref # 9)	92015-1005	1
ROD END,TIE RH FEMAL (Ref # 10)	39112-1003	1
LEVER,GEAR CHANGE (Ref # 11)	13156-4001	1
BOLT-UPSET,6X20 (Ref # 12)	112G0620	1
SPRING CHNG DRUM LEV (Ref # 13)	92081-051	1
BOLT,CHANGE DRUM LEV (Ref # 14)	92150-1450	1
LEVER,GEAR CHNG DRUM (Ref # 15)	13168-024	1
SPRING,KICK PAWL (Ref # 16)	92083-018	1
LEVER ASSY GEAR CHNG (Ref # 17)	13161-029	1
BOLT,NEUTRAL POSITIO (Ref # 18)	92001-1301	1
NUT 6MM (Ref # 19)	312B0600	1
SPRING,CHG PEDL RTRN (Ref # 20)	92083-028	1
BOLT,FLANGED,8X35 (Ref # 21)	92001-1577	1
DRUM ASSY,GEAR CHANG (Ref # 22)	13239-1015	1
SCREW CNTSNK HD 6X20 (Ref # 23)	221B0620	1
HOLDER,CHANGE DRUM (Ref # 24)	13091-1088	1
PIN GEAR CHANGE DRUM (Ref # 25)	92042-014	5
PIN-CHANGE DRUM (Ref # 26)	92042-020	1
FORK,SELECTOR,3RD (Ref # 27)	13140-046	1
PIN SELECT FORK GUID (Ref # 28)	92043-016	1
WASHER LOCK 10MM (Ref # 29)	92031-001	1

1981 Police 1000 PARTS LIST

GEAR CHANGE MECHANISM ('79-'81 C2/C3/C4)

ITEM NAME	PART NUMBER	QUANTITY
ROD,SHIFT (Ref # 30)	49047-1006	1
CIRCLIP 12MM (Ref # 31)	480J1200	1
UNAVAILABLE IN PRICE BOOK (Ref # 32)	13440-045	2
LEVER,NEUTRAL POSITI (Ref # 33)	13236-1020	1
SPRING CHNG DRUM LEV (Ref # 34)	92081-051	1
CIRCLIP 6MM (Ref # 35)	482J6000	1
BOLT,CHG DRUM POSITN (Ref # 36)	92001-1052	1
WASHER,LOCK (Ref # 37)	92024-047	1
BOLT,RETURN SPRING (Ref # 38)	92001-1401	1
BOLT-SMALL-UPSET,8X1 (Ref # 39)	115B08105	1
NUT CASTLE (Ref # 40)	321B0800	1
WASHER PLAIN 8MM (Ref # 41)	410B0800	1