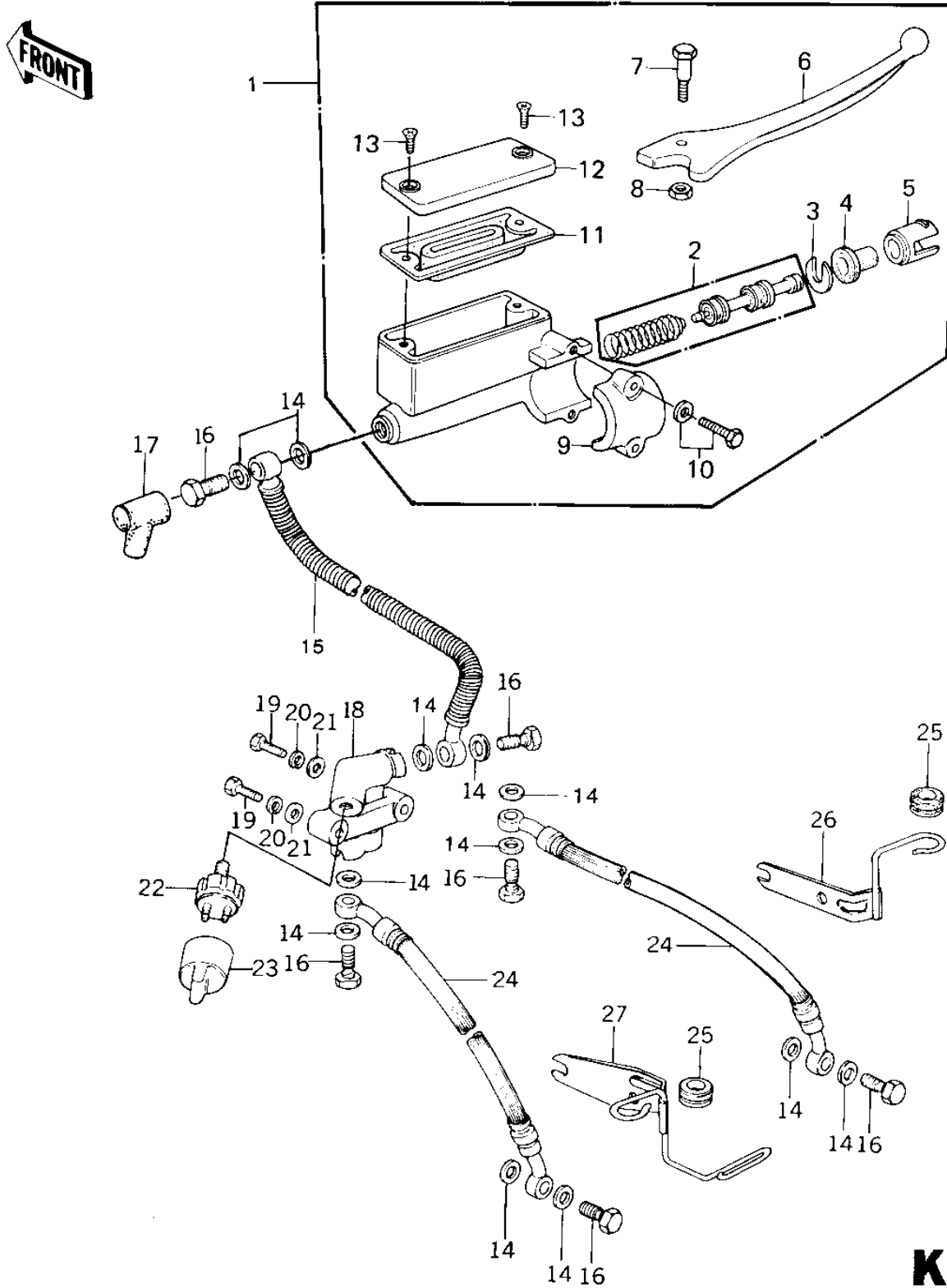


# 1981 Police 1000 PARTS DIAGRAM

FRONT MASTER CYLINDER (KZ1000-C4)



102

**KZ 10**

# 1981 Police 1000 PARTS LIST

## FRONT MASTER CYLINDER (KZ1000-C4)

| ITEM NAME                       | PART NUMBER | QUANTITY |
|---------------------------------|-------------|----------|
| CYLINDER ASSY,MASTER (Ref # 1)  | 43015-1059  | 1        |
| PISTON-COMP-BRAKE (Ref # 2)     | 43020-1023  | 1        |
| STOPER,PISTON (Ref # 3)         | 43022-1001  | 1        |
| DUST COVER (Ref # 4)            | 49016-1010  | 1        |
| LINER,PISTON (Ref # 5)          | 14008-1007  | 1        |
| LEVER,FRONT BRAKE (Ref # 6)     | 46092-1012  | 1        |
| BOLT,HEX HEAD,8X25 (Ref # 7)    | 92001-1058  | 1        |
| NUT 6MM (Ref # 8)               | 312B0600    | 1        |
| HOLDER,MASTER CYLIND (Ref # 9)  | 43034-1001  | 1        |
| BOLT,HEX HEAD,6X25 (Ref # 10)   | 43033-003   | 2        |
| DIAPHRAGM (Ref # 11)            | 43028-1008  | 1        |
| CAP,OIL CUP (Ref # 12)          | 43026-1006  | 1        |
| SCREW,COUNTERSUNK HE (Ref # 13) | 92001-1055  | 2        |
| WASHER-OIL BOLT (Ref # 14)      | 43067-001   | 12       |
| HOSE,MASTER CYL BRAK (Ref # 15) | 43059-1062  | 1        |
| BOLT,OIL,L=23 (Ref # 16)        | 92002-1888  | 6        |
| BOOT,DUST (Ref # 17)            | 49006-1041  | 1        |
| JOINT,FOUR WAY (Ref # 18)       | 43075-002   | 1        |
| BOLT,FLANGED,6X65 (Ref # 19)    | 130G0665    | 2        |
| WASHER SPRING 6MM (Ref # 20)    | 461F0600    | 2        |
| WASHER PLAIN 6MM (Ref # 21)     | 411B0600    | 2        |
| SWITCH-FRONT BRAKE (Ref # 22)   | 43065-001   | 1        |
| CAP,FRONT BRK SWITCH (Ref # 23) | 11012-1037  | 1        |
| HOSE,CALIPER BRAKE (Ref # 24)   | 43059-033   | 2        |
| DAMPER RUBBER,CYL HS (Ref # 25) | 43064-006   | 2        |
| BRACKET,BRAKE HOSE (Ref # 26)   | 43063-008   | 1        |
| BRACKET (Ref # 27)              | 11034-1041  | 1        |