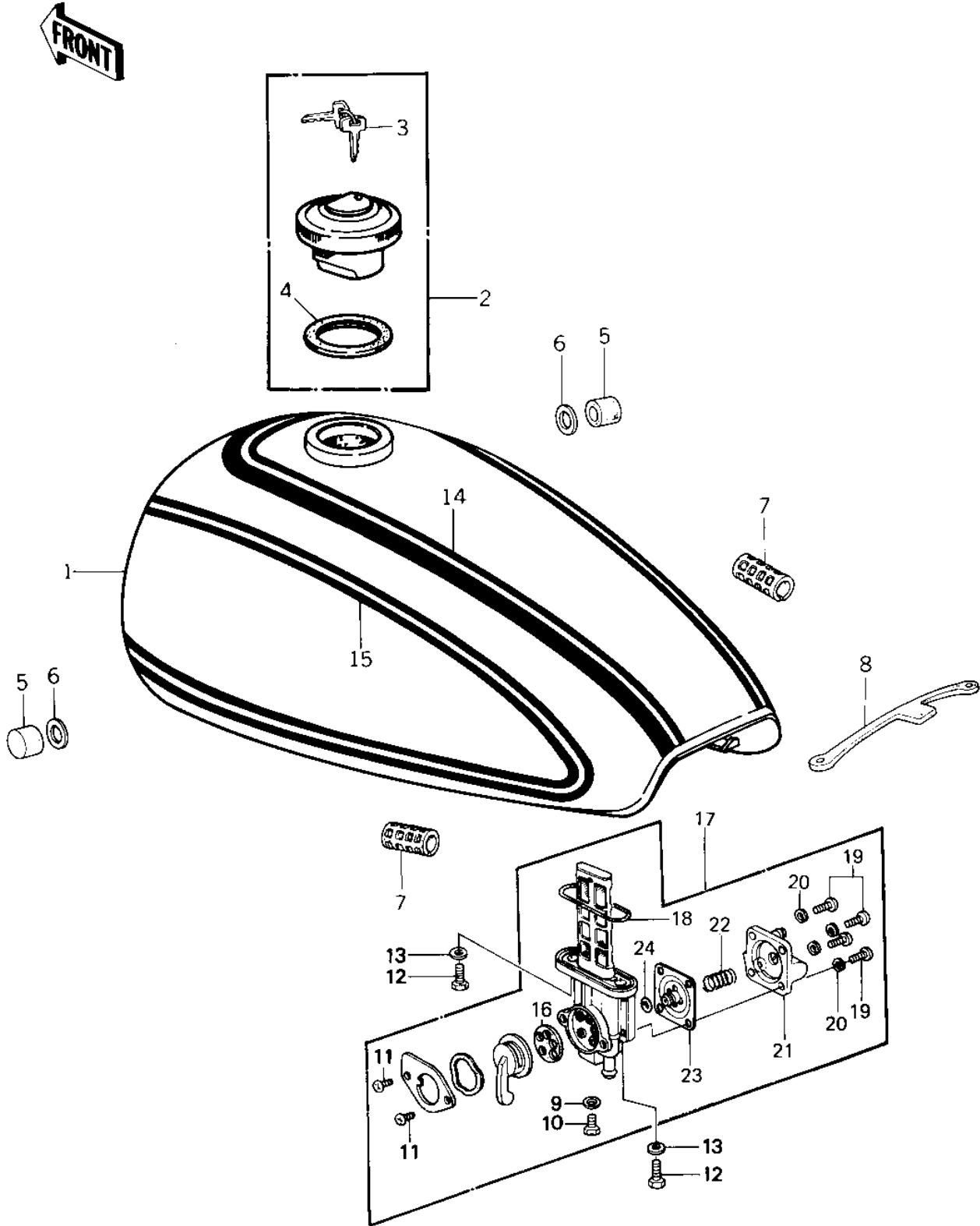


1981 Police 1000 PARTS DIAGRAM

FUEL TANK ('79-'81 C2/C3/C4)



1027

1981 Police 1000 PARTS LIST

FUEL TANK ('79-'81 C2/C3/C4)

| ITEM NAME | PART NUMBER | QUANTITY |
|---------------------------------|---------------|----------|
| TANK-FUEL, (Ref # 1) | 51001-4001-8C | 1 |
| CAP ASSY, LOCKING (Ref # 2) | 51048-006 | 1 |
| KEY SET,TANK,#165 (Ref # 3) | 27008-053-65 | AR |
| KEY SET,TANK,#166 (Ref # 3) | 27008-053-66 | AR |
| KEY SET,TANK,#167 (Ref # 3) | 27008-053-67 | AR |
| KEY SET,TANK,#168 (Ref # 3) | 27008-053-68 | AR |
| KEY SET TANK,#169 (Ref # 3) | 27008-053-69 | AR |
| GASKET,FUEL TANK CAP (Ref # 4) | 51059-009 | 1 |
| DAMPER RUBBER,FL TAN (Ref # 5) | 92075-125 | 2 |
| WASHER-PL-10.5X26X2. (Ref # 6) | 92022-044 | 2 |
| DAMPER RUBBER (Ref # 7) | 92075-084 | 2 |
| BAND,FUEL TANK (Ref # 8) | 92072-042 | 1 |
| GASKET,DRAIN BOLT (Ref # 9) | 11009-1045 | 1 |
| BOLT,DRAIN (Ref # 10) | 92001-1089 | 1 |
| SCREW PAN HEAD 4X8 (Ref # 11) | 220B0408 | 2 |
| BOLT,6X20,FUEL TAP (Ref # 12) | 92001-1091 | 2 |
| WASHER-PLAIN (Ref # 13) | 92022-183 | 2 |
| FUEL TANK DECAL TOP (Ref # 14) | 56029-194 | 1 |
| FUEL TANK DECAL LEFT (Ref # 15) | 56029-196 | 1 |
| FUEL TANK DECAL RIGH (Ref # 15) | 56029-195 | 1 |
| GASKET,FUEL TAP (Ref # 16) | 11009-1044 | 1 |
| TAP ASSY,FUEL (Ref # 17) | 51023-1010 | 1 |
| "0" RING (Ref # 18) | 43058-1001 | 1 |
| SCREW-PAN-CRSOSS,4X1 (Ref # 19) | 220B0412 | 4 |
| WASHER SPRING 4MM (Ref # 20) | 461F0400 | 4 |
| COVER ASSY,FUEL TAP (Ref # 21) | 51036-1001 | 1 |
| SPRING,DIAPHRAGM (Ref # 22) | 92081-1054 | 1 |
| DIAPHRAGM VALVE ASSY (Ref # 23) | 16126-1011 | 1 |
| "0" RING,DIAPHRAGM (Ref # 24) | 92055-1068 | 1 |