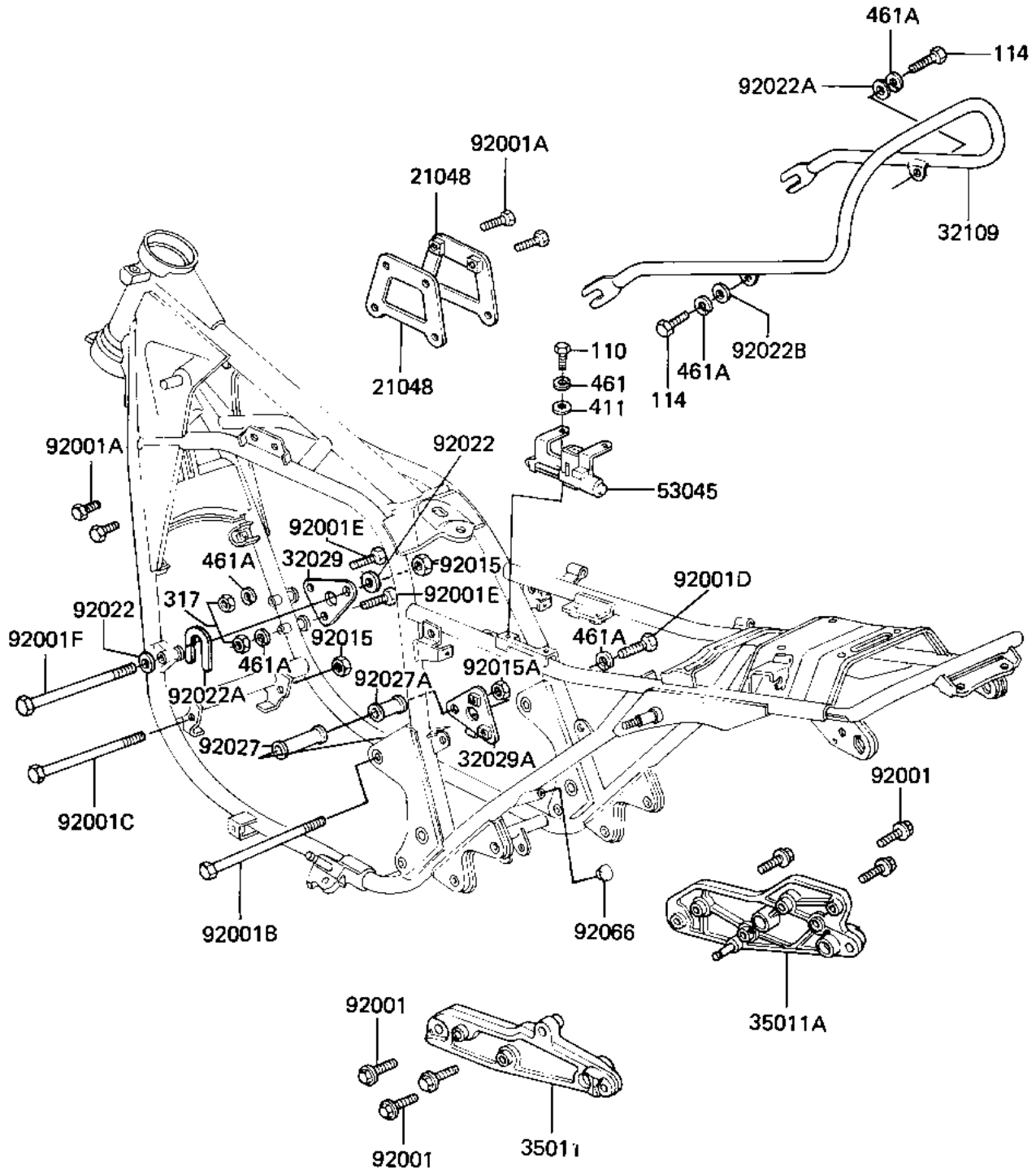


# 1982 LTD PARTS DIAGRAM

## FRAME FITTINGS

F2131-0008



# 1982 LTD PARTS LIST

## FRAME FITTINGS

ITEM NAME	PART NUMBER	QUANTITY
PLATE,IGNITION COIL (Ref # 21048)	21048-1001	2
BRACKET-ENGINE (Ref # 32029)	32029-1142	1
BRACKET-ENGINE (Ref # 32029A)	32029-1143	1
GRIP-FRAME (Ref # 32109)	32109-1027	1
STAY,MUFFLER,LH (Ref # 35011)	35011-1086	1
STAY,MUFFLER,RH (Ref # 35011A)	35011-1087	1
HOOK ASSY,HELMET (Ref # 53045)	53045-1001	1
BOLT,8X28 (Ref # 92001)	92001-1095	6
BOLT,HEX HEAD,6MM (Ref # 92001A)	92001-137	4
BOLT,FLANGED,12X285 (Ref # 92001B)	92001-1655	1
BOLT (Ref # 92001C)	92001-1585	1
BOLT,FLANGED,8X45 (Ref # 92001D)	92001-1579	2
BOLT-FLANGE (Ref # 92001E)	92001-1582	2
BOLT,FLANGED,10X320, (Ref # 92001F)	92001-1624	1
NUT,10MM (Ref # 92015)	92015-1429	2
NUT-LOCK,12MM (Ref # 92015A)	92019-009	1
WASHER,PLAIN (Ref # 92022)	92022-1022	2
WASHER,U FORMED (Ref # 92022A)	92022-1259	1
WASHER,8.5X20X1.6 (Ref # 92022B)	92022-1561	2
COLLAR,13X25X54 (Ref # 92027)	92027-1310	1
COLLAR,13X25X29.5 (Ref # 92027A)	92027-1311	1
PLUG,FRAME END (Ref # 92066)	92066-1034	1
BOLT-UPSET,6X12 (Ref # 110)	112G0612	2
BOLT-SMALL,8X18 (Ref # 114)	114N0818	2
NUT,8M/M (Ref # 317)	317B0800	2
WASHER PLAIN 6MM (Ref # 411)	411B0600	2
WASHER SPRING 6MM (Ref # 461)	461F0600	2
WASHER SPRING 8MM (Ref # 461A)	461F0800	6