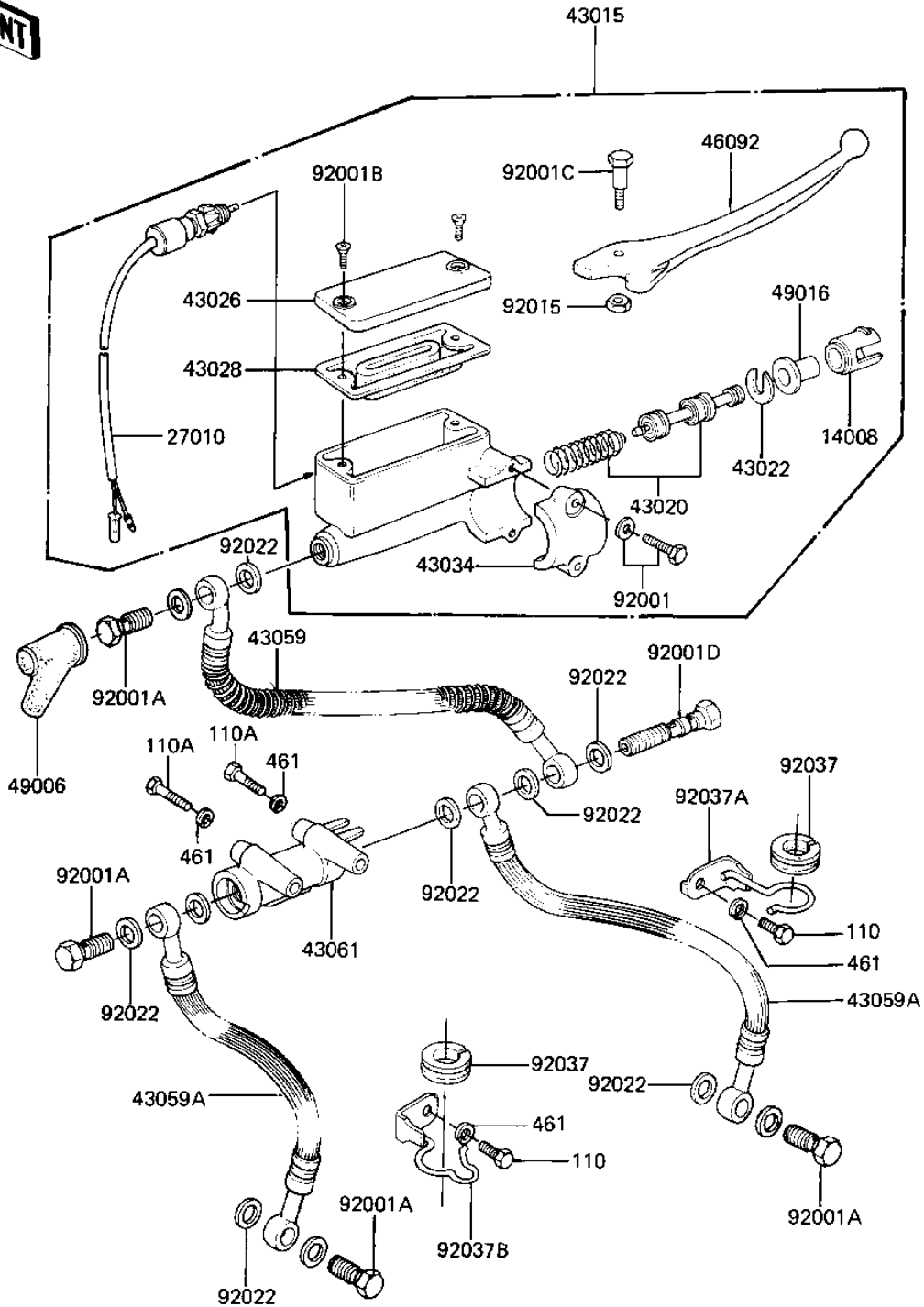


# 1982 LTD PARTS DIAGRAM

## FRONT MASTER CYLINDER

F2291-0006



# 1982 LTD PARTS LIST

## FRONT MASTER CYLINDER

| ITEM NAME                           | PART NUMBER | QUANTITY |
|-------------------------------------|-------------|----------|
| LINER,PISTON (Ref # 14008)          | 14008-1007  | 1        |
| SWITCH,BRAKE (Ref # 27010)          | 27010-1028  | 1        |
| CYLINDER ASSY,FR (Ref # 43015)      | 43015-1046  | 1        |
| PISTON-COMP-BRAKE (Ref # 43020)     | 43020-1023  | 1        |
| STOPER,PISTON (Ref # 43022)         | 43022-1001  | 1        |
| CAP,OIL CUP (Ref # 43026)           | 43026-1006  | 1        |
| DIAPHRAGM (Ref # 43028)             | 43028-1008  | 1        |
| HOLDER,MASTER CYLIND (Ref # 43034)  | 43034-1001  | 1        |
| HOSE-BRAKE (Ref # 43059)            | 43059-1085  | 1        |
| HOSE-BRAKE,FR,L=600 (Ref # 43059A)  | 43059-1192  | 2        |
| JOINT,FR BRAKE HOSE (Ref # 43061)   | 43061-1002  | 1        |
| LEVER,FRONT BRAKE (Ref # 46092)     | 46092-1012  | 1        |
| BOOT,DUST (Ref # 49006)             | 49006-1041  | 1        |
| DUST COVER (Ref # 49016)            | 49016-1010  | 1        |
| BOLT,HEX HEAD,6X25 (Ref # 92001)    | 43033-003   | 2        |
| BOLT,OIL,L=23 (Ref # 92001A)        | 92002-1888  | 4        |
| SCREW,COUNTERSUNK HE (Ref # 92001B) | 92001-1055  | 2        |
| BOLT,CLUTCH LEV FITT (Ref # 92001C) | 92001-1056  | 1        |
| BOLT (Ref # 92001D)                 | 92002-1909  | 1        |
| NUT 6MM (Ref # 92015)               | 312B0600    | 1        |
| WASHER-OIL BOLT (Ref # 92022)       | 43067-001   | 11       |
| DAMPER RUBBER,CYL HS (Ref # 92037)  | 43064-006   | 2        |
| CLAMP (Ref # 92037A)                | 92037-1218  | 1        |
| CLAMP (Ref # 92037B)                | 92037-1232  | 1        |
| BOLT-UPSET,6X12 (Ref # 110)         | 112G0612    | 2        |
| BOLT-UPSET,6X40 (Ref # 110A)        | 112G0640    | 2        |
| WASHER SPRING 6MM (Ref # 461)       | 461F0600    | 4        |